



GREAT BEAR
RESOURCES

2010 discovery of Stockwork zone identified 300m to north of Main zone that is open in all directions. Results include 3.16 m of 252.0 g/t silver, 0.22% lead and 1.14% zinc within 9.14 m returning 98.6 g/t silver, 0.12% lead and 0.78% zinc.



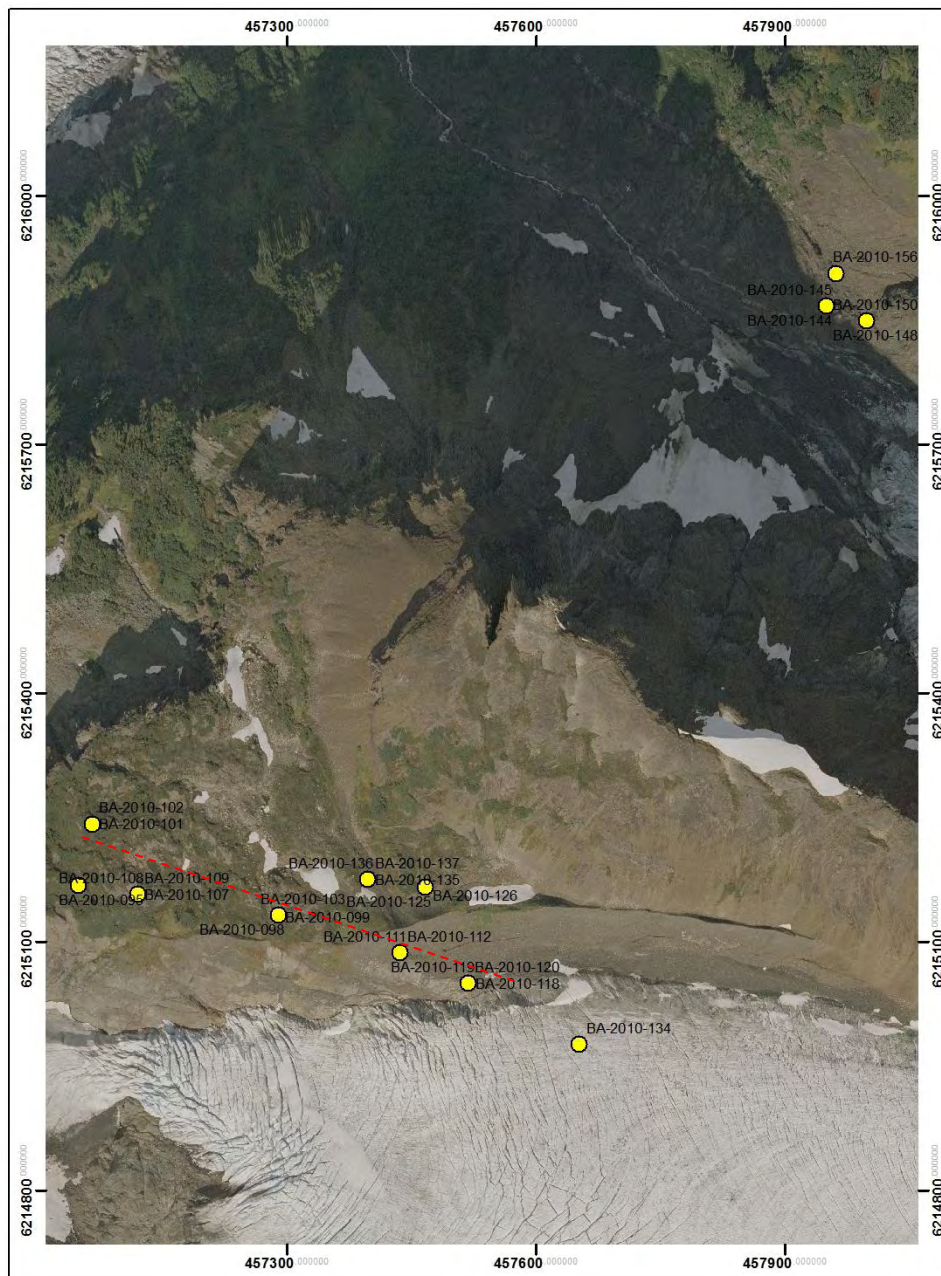


GREATBEAR
RESOURCES

NORTH ZONE:

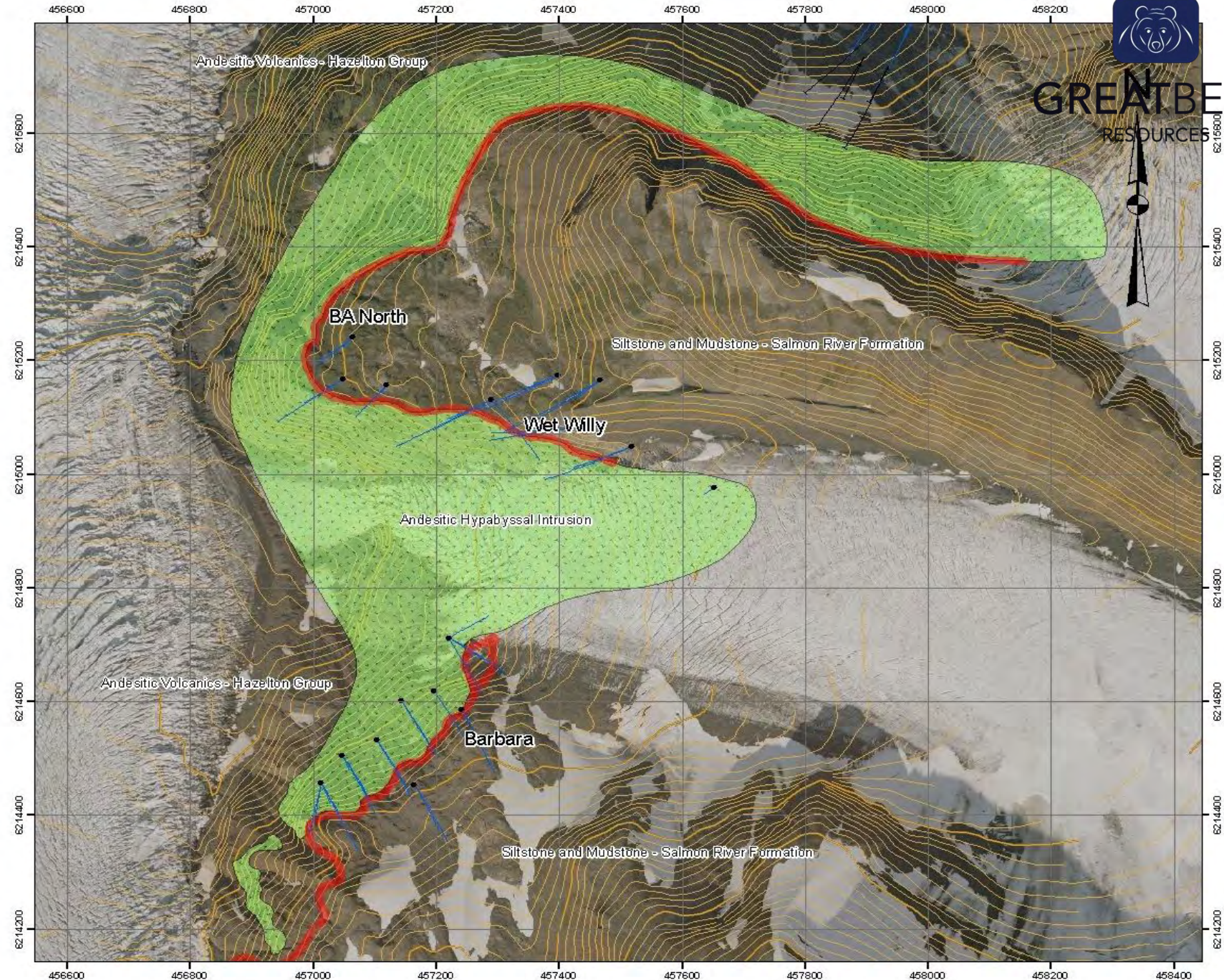
Strike length

700 meters





GREAT BEAR
RESOURCES





GREATBEAR
RESOURCES

Generative work:
PhD mapping
Petrology
In house scoping/ modeling
VTEM interpretation

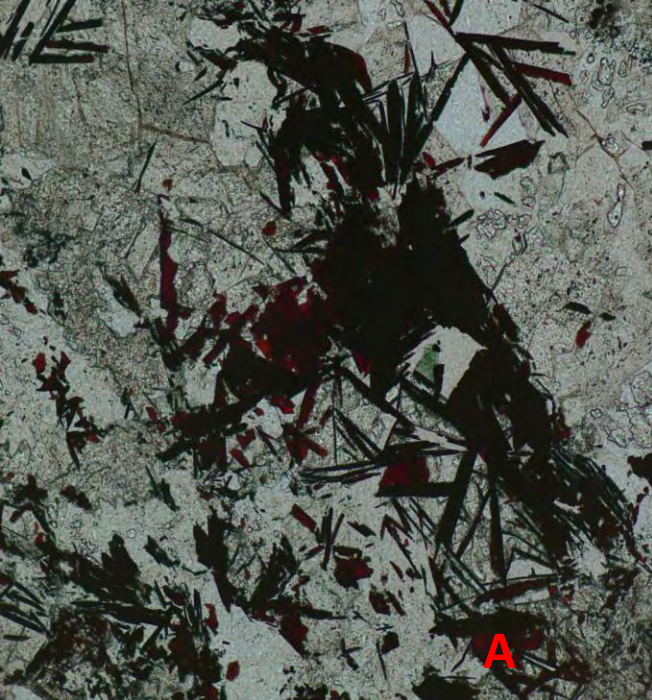


GREATBEAR
RESOURCES

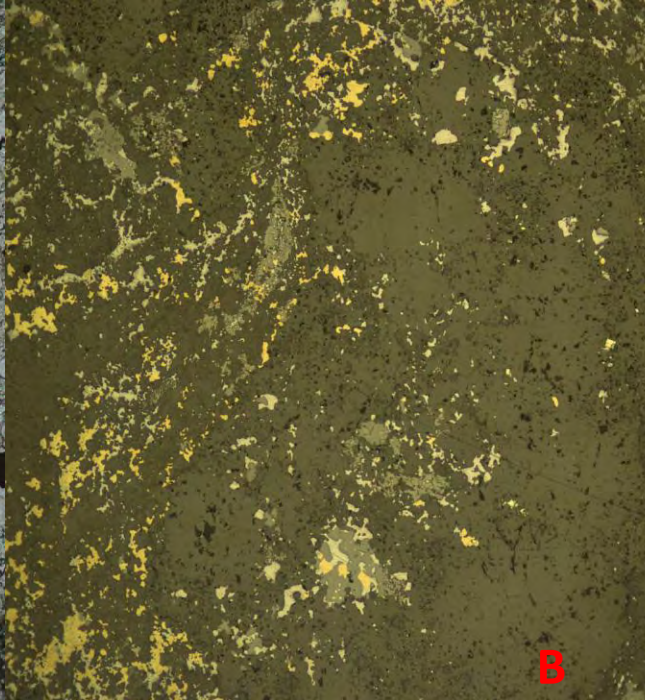




GREATBEAR
RESOURCES



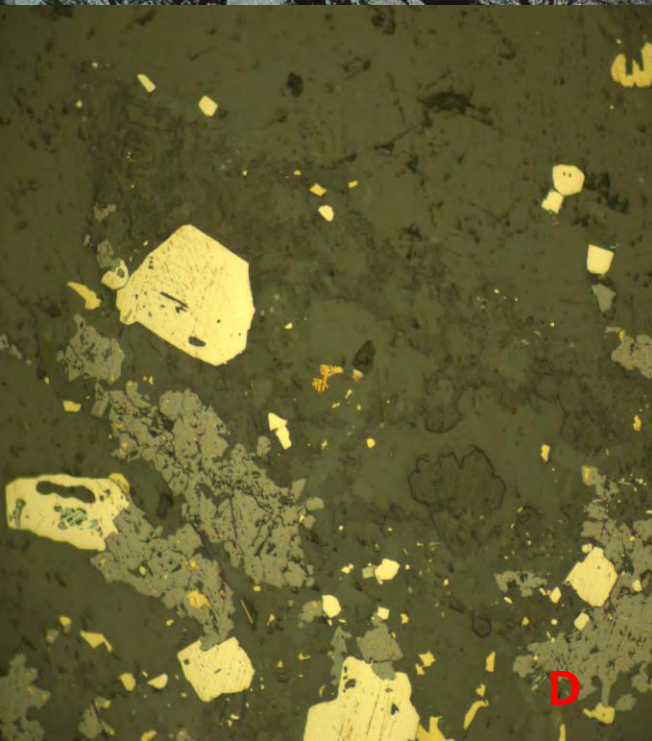
A



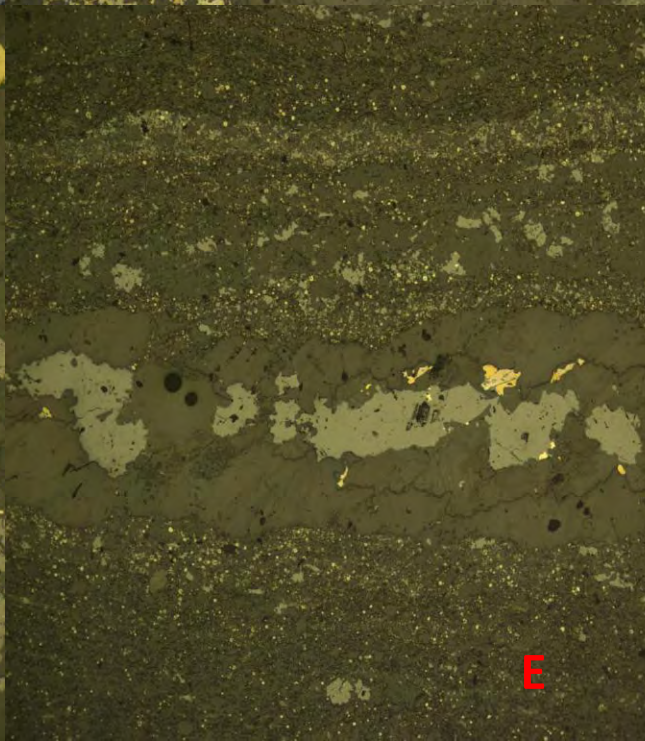
B



C



D



E

A Pyrrargyrite- Andesite host
BA-2010-154, 81.1m

B SP+GL+CPY+PY – VCCL host
BA-2010-082, 59.1m

C SP+GL+CPY+PY - Andesite host
BA-2010-136, 151.4m

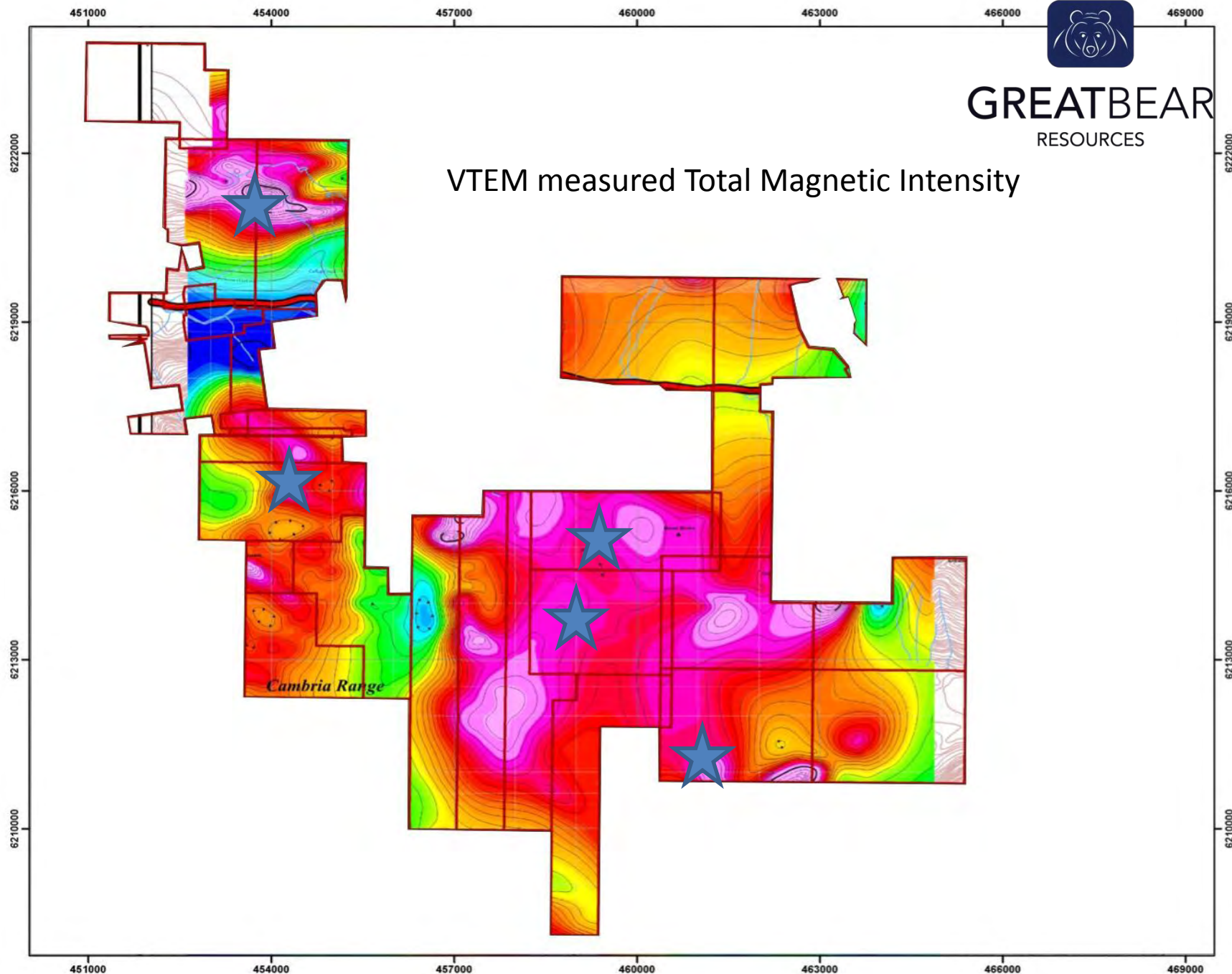
D SP+GL+CPY+PY +(Au?)
BA-2010-154, 81.1m

E SP+GL+CPY+PY –VCCL host
BA-2010-160, 5.8m



GREATBEAR
RESOURCES

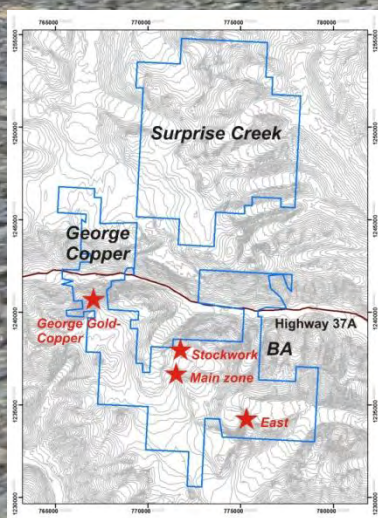
VTEM measured Total Magnetic Intensity



George Copper



GREATBEAR
RESOURCES





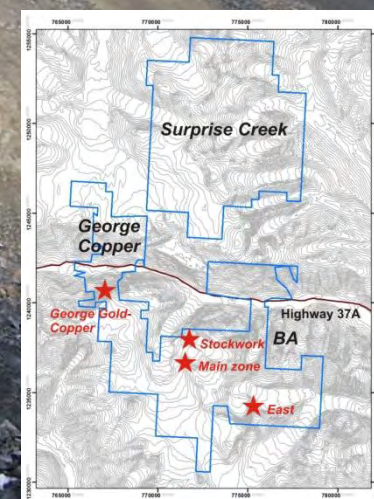
GREATBEAR
RESOURCES

**Gold-rich zone system identified on George Copper claims.
700 x 500 m area defined by 19 bedrock grab samples
averaging 3.03 g/t gold and 0.63% copper, with high of 38.5
g/t gold and 3.86% copper.**



GREATBEAR
RESOURCES

East Zone





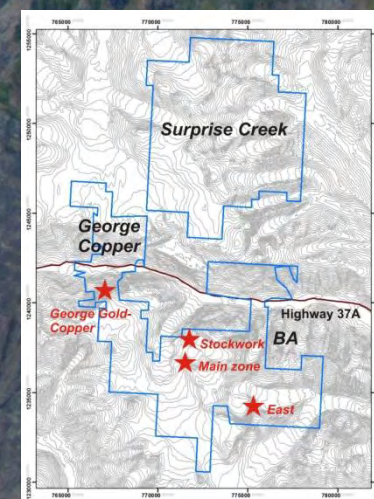
GREATBEAR
RESOURCES

**Rock samples returning values up to 53 g/t silver,
1.41% lead, and 0.24% zinc.**



GREATBEAR
RESOURCES

Surprise Creek





GREATBEAR
RESOURCES

Early stage exploration play with similar geology and silver-rich mineralization as seen at BA

7,472 ha land package underlain by Upper Hazelton group stratigraphy as at the BA Project and Eskay Creek

Hand samples return up to 65.8 g/t silver, 0.95% lead and 1.77% zinc

**2011 projected exploration program:
Continuity drilling
George Copper
Surprise Creek
East Zone**



GREATBEAR
RESOURCES





GREATBEAR
RESOURCES



Thank you



For more information please feel free to contact me at ltheny@greatbearresources.ca or
Chris Taylor at cnatayllor@gmail.com