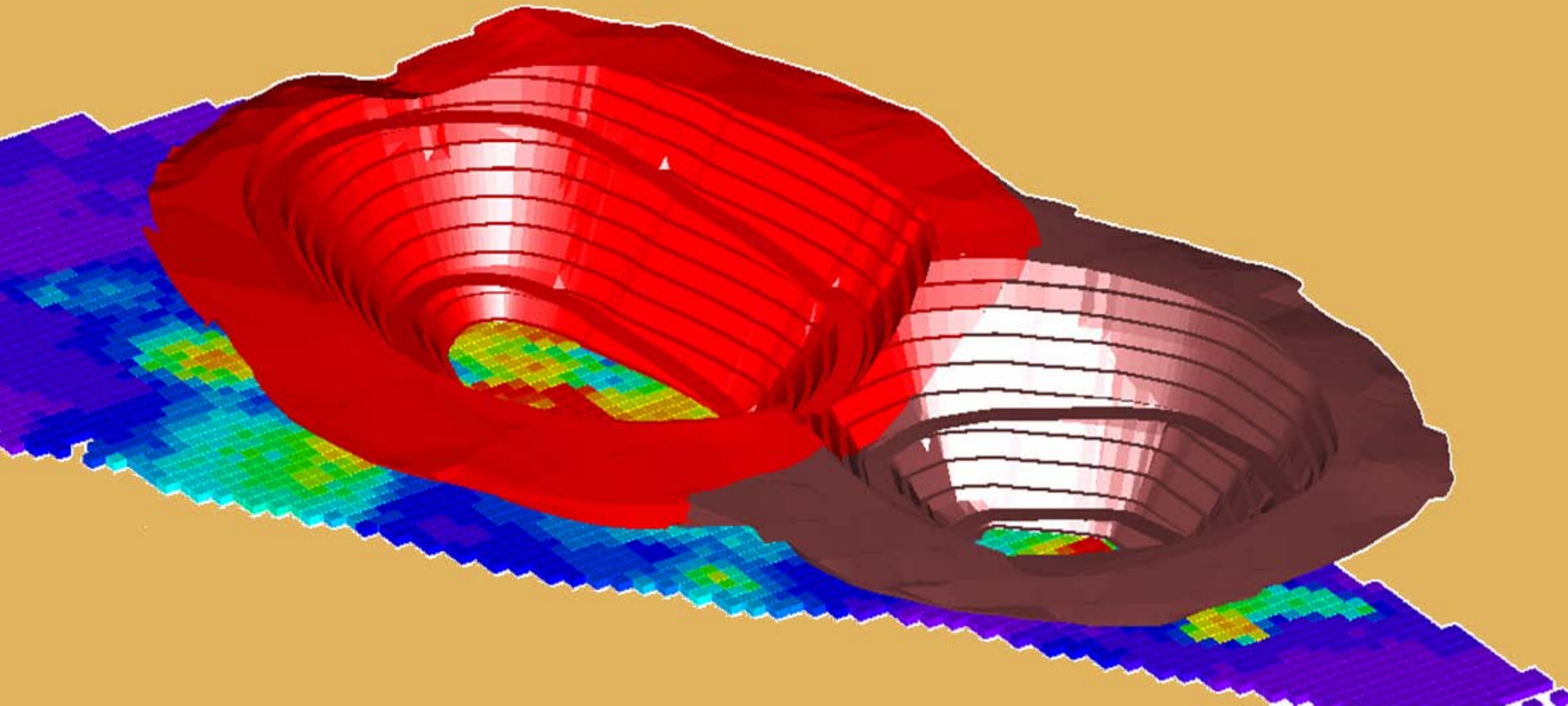


bcMetals corporation

Red Chris Copper-gold porphyry Project

Soon to be Canada's newest open pit copper-gold mine



Minerals North

Stewart, BC

April 28 – 29, 2005

bcMetals corporation

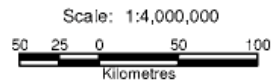
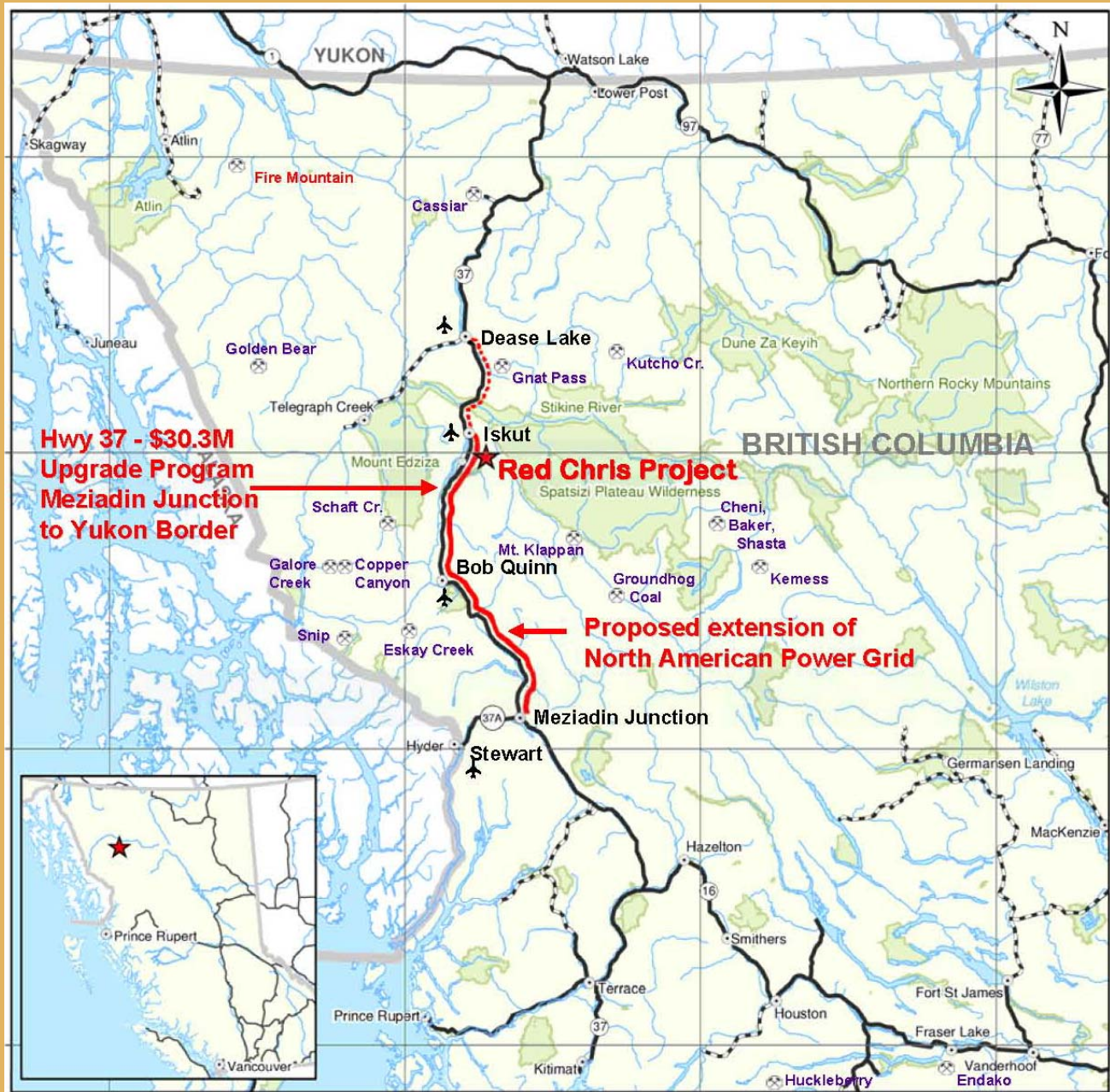
NOTICE TO VIEWERS

This presentation contains forward looking statements within the meaning of the "Safe Harbor" provisions of the U.S. Private Securities Litigation Reform Act of 1995. These statements are based on management's current expectations and beliefs and is subject to a number of risks and uncertainties that could cause actual results to differ materially from those described in the forward-looking statements.

April 28, 2005

Red Chris Project

Red Chris and Other Major Mineral Deposits Of the Golden Triangle of Northern BC



Legend

- ★ Red Chris Project
- Populated Place
- Highway
- - - Gravel or Dirt Road
- Surface Water
- Park
- ✈ Airport / Airstrip
- ⊗ Mineral Deposit
- Proposed Power Line
- - - Proposed Power Line Extension

Red Chris Project

Red Chris Update

- Completed 2004 field program; total drilling ~ 100,000 m
- Completed feasibility study. 43-101 technical report filed on www.sedar.com 20 December 2004.
- Environment Assessment Process almost complete. Permits anticipated in July 2005
- Hydrocopper™ Process testing completed end March 2005
- Entering discussions with smelter/trading companies regarding concentrate Off-Take Agreements and financial institutions for Project Finance

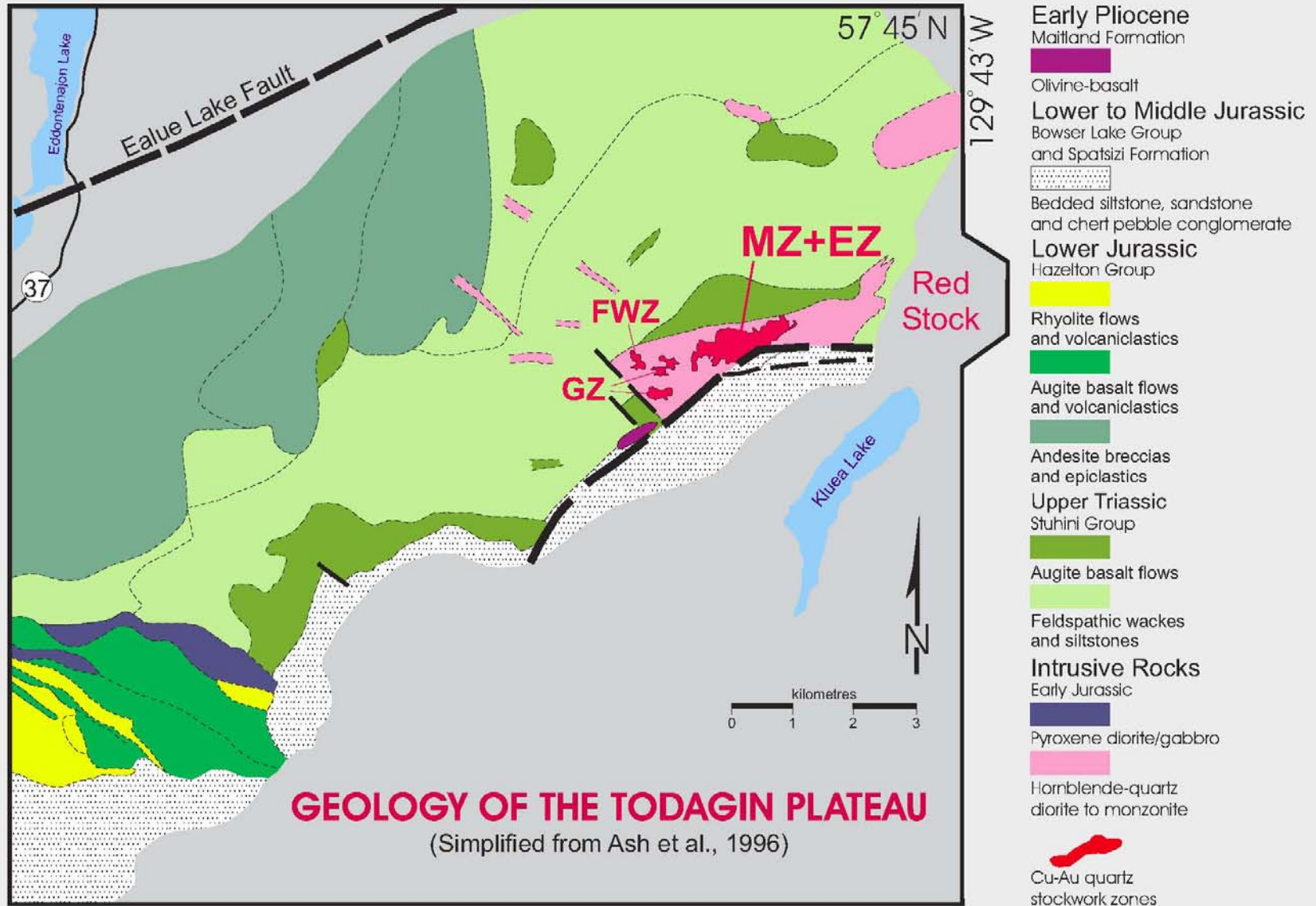
Red Chris Project

Red Chris camp and location of proposed open pit limit - looking SW



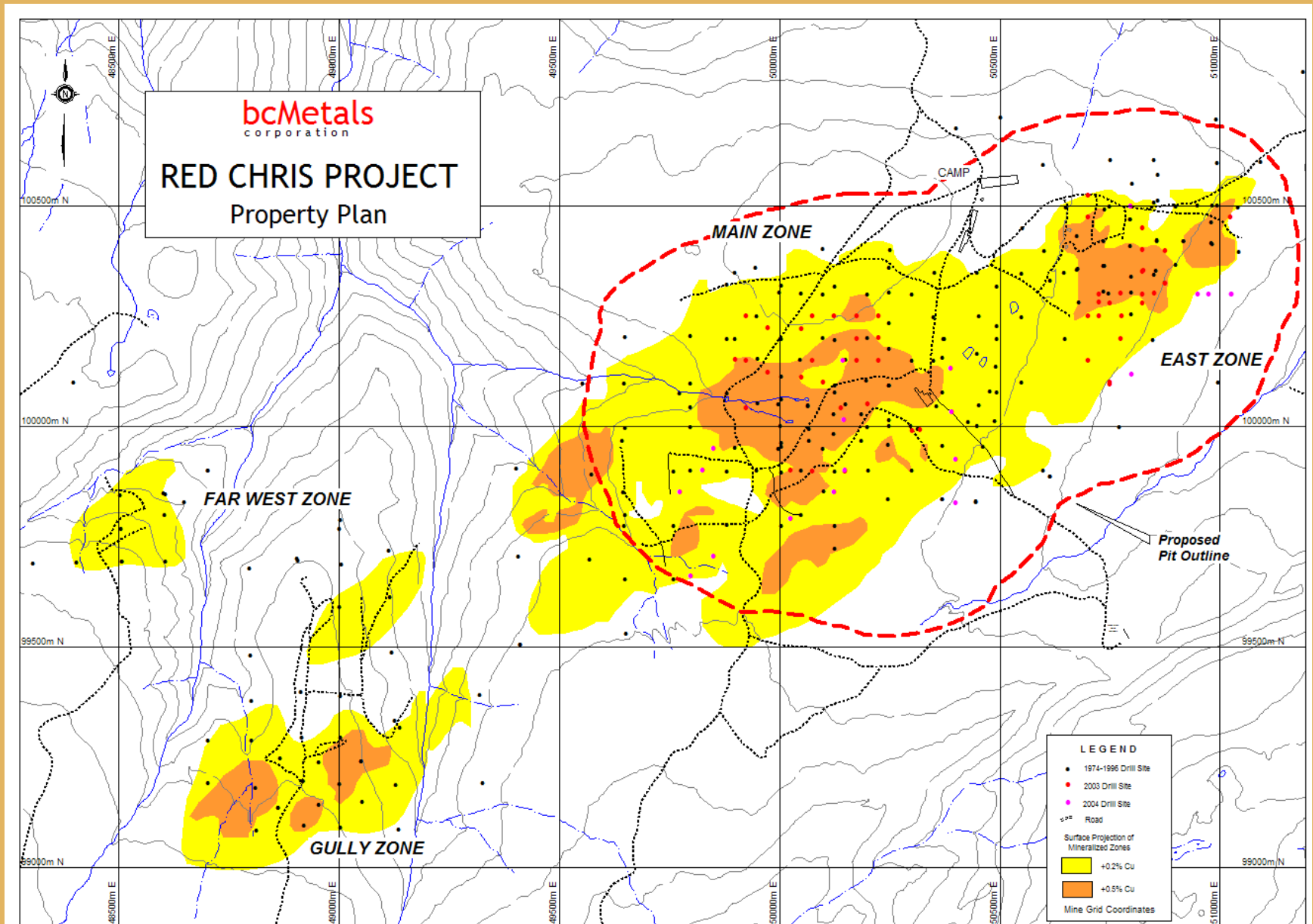
Red Chris Project

Geology



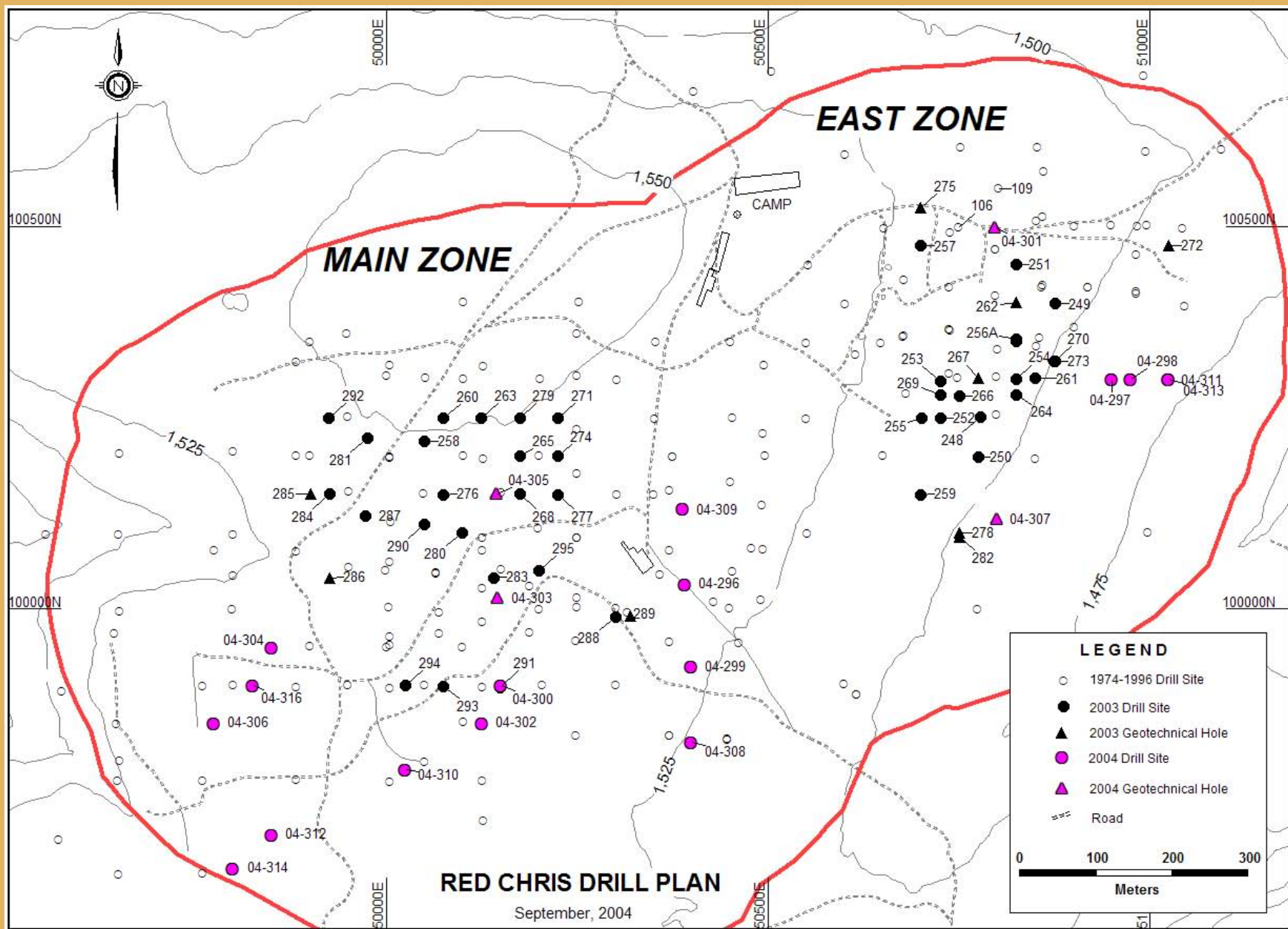
Red Chris Project

Red Chris - Projected Mineralization



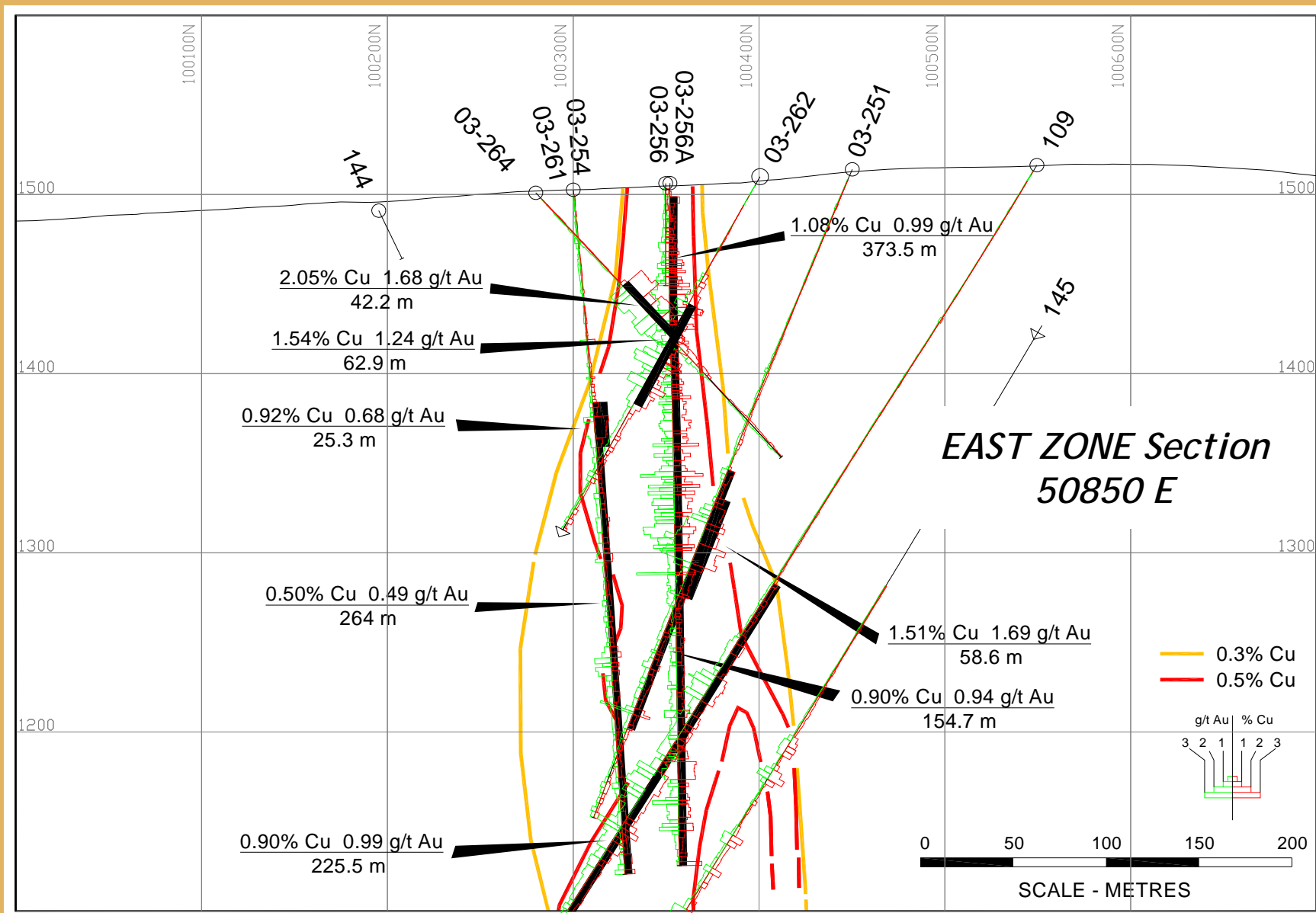
Red Chris Project

Red Chris Drill Plan



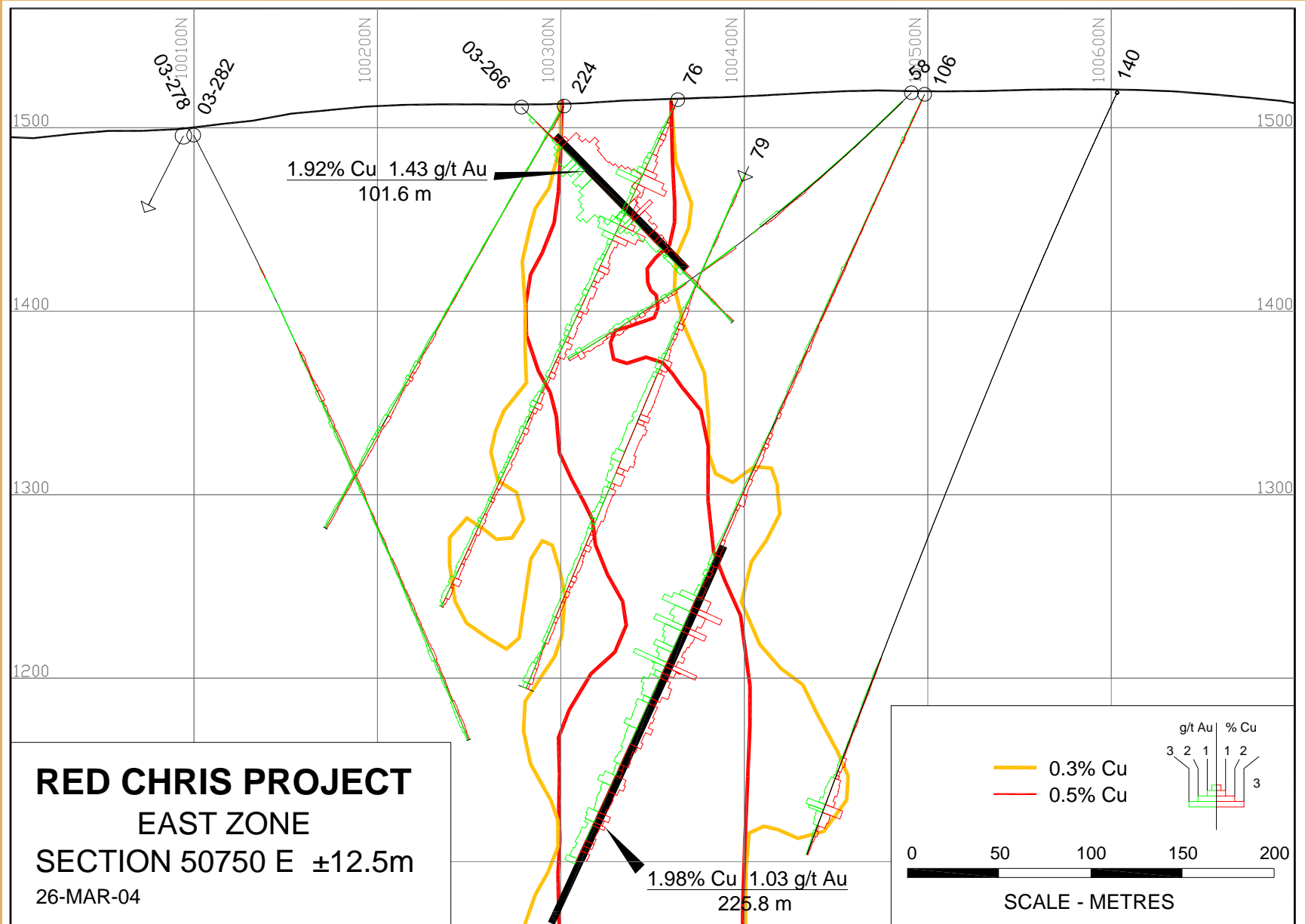
Red Chris Project

50,850 E Section



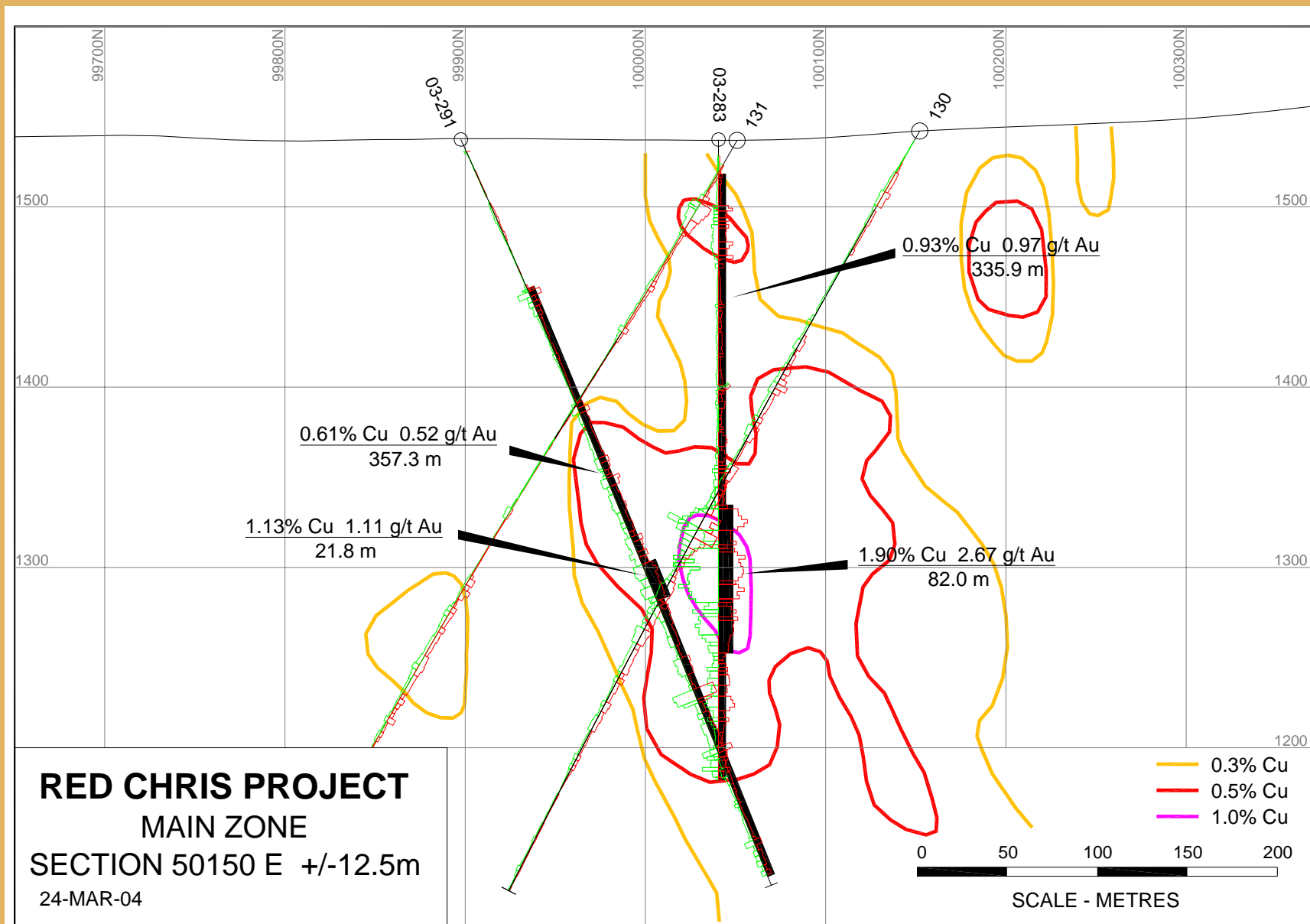
Red Chris Project

50,750 E Section



Red Chris Project

50,150 E Section



Red Chris Project

FEASIBILITY STUDY for 30ktpd OPEN PIT MINE

***1.18 million ounces of gold +
1.85 billion pounds of copper in concentrates
25 year project life***

Red Chris Technical Report 16 December 2004 filed on www.sedar.com

Red Chris Project

FEASIBILITY STUDY for 30ktpd OPEN PIT MINE

Performed and consolidated by AMEC E&C Services Ltd. (“AMEC”) with contributions from independent consultants:

- Resource Estimate - *Giroux Consultants*
- Reserve Estimate, Mine Plane & Production Schedule, Mine Capex & Opex estimates - *Nilsson Mine Services Ltd.*
- Project Capex - *Merit Consultants International*
- Metallurgical Test Work - *G & T Metallurgical Services Ltd.*

Red Chris Project

FEASIBILITY STUDY - BASE CASE DESIGN BASIS

- Conventional open pit mine – total material movement 120,000 tpd (average 1st 5 years)
- Conventional 30,000 tpd flotation mill
- Concentrate: 27% Cu, ~12 gpt Au (average 1st 5 years)
- Conventional tailings mgmt system – water recirculation to mill
- Concentrates to Pacific Rim smelters via Port of Stewart, BC
- Power line Meziadin - Iskut sponsored by Provincial Government (approval pending)
- 23 km private access road & powerline from Highway 37
- Fly in – Fly out (2 x 2) operating schedule
- Reclamation at end of mine / mill operations
- 99,150m of drilling in 371 holes
- Project expenditures exceed \$30 million to date

Red Chris Project

Stewart Bulk Terminal - Stewart, BC



bcMetals

Red Chris Project

RESERVES - PROVEN & PROBABLE (@ \$3.75 / t milled cut-off) ¹

185.4 Mt @ 0.414 % Cu and 0.325 gpt Au Strip ratio 2.3:1

276 Mt @ 0.349 % Cu and 0.266 gpt Au (25-year LOM strip ratio 1.1:1 after stockpile processing)

RESOURCES - MEASURED & INDICATED (@ 0.2% Cu cut-off)

446.1Mt @ 0.36% Cu and 0.29 gpt Au

(211.4Mt @ 0.34% Cu and 0.30 gpt Au outside current pit limit)

RESOURCES – INFERRED (@ 0.2% Cu cut-off)

Main & East Zones: 268Mt @ 0.30% Cu & 0.27 gpt Au

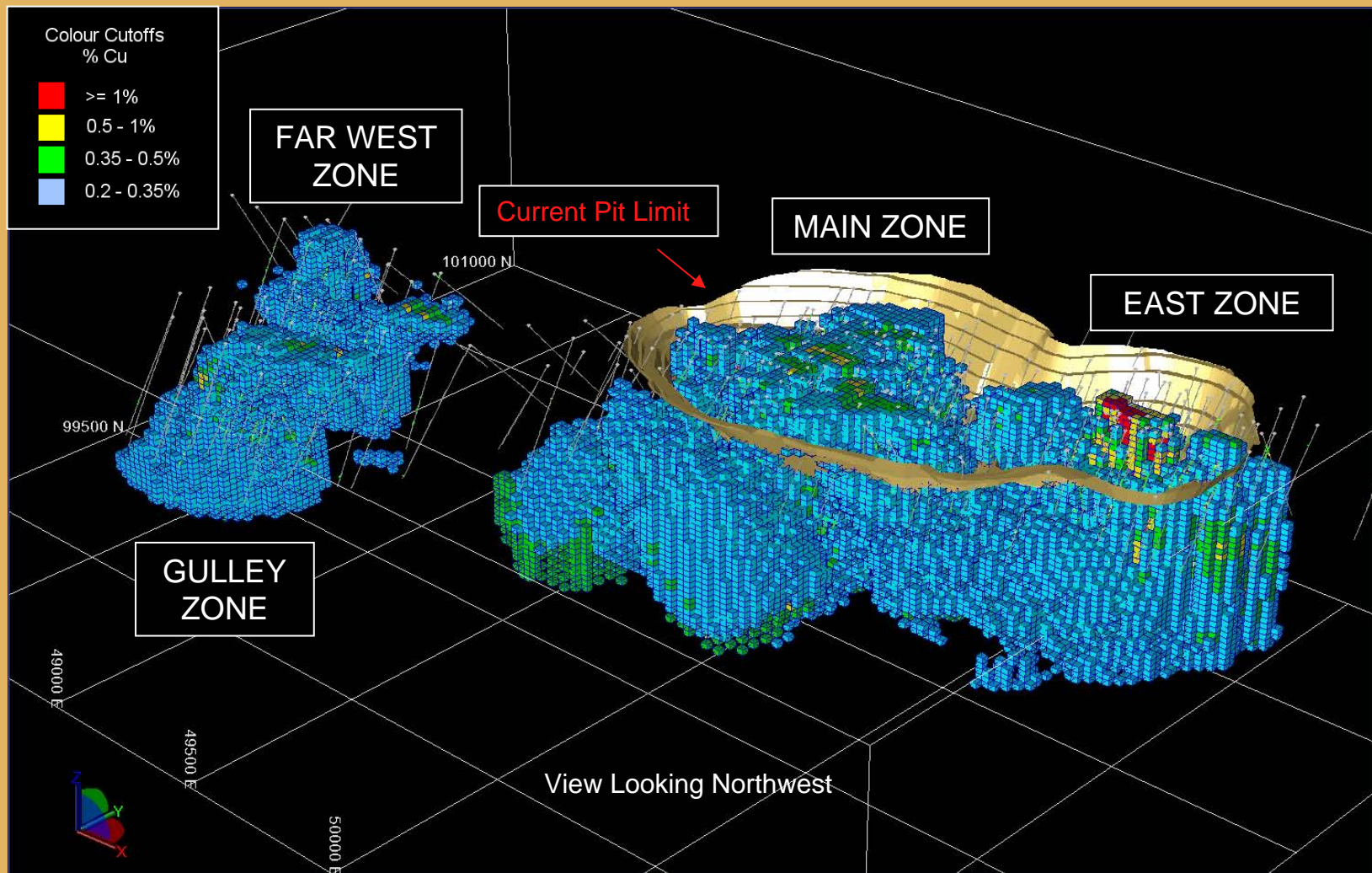
Gully – Far West Zone: 116Mt @ 0.32% Cu & 0.29 gpt Au

Deposit remains open to the west

¹ Ref. Red Chris Technical Report, 16 December 2004 filed on www.sedar.com

Red Chris Project

Measured, Indicated and Inferred Resources

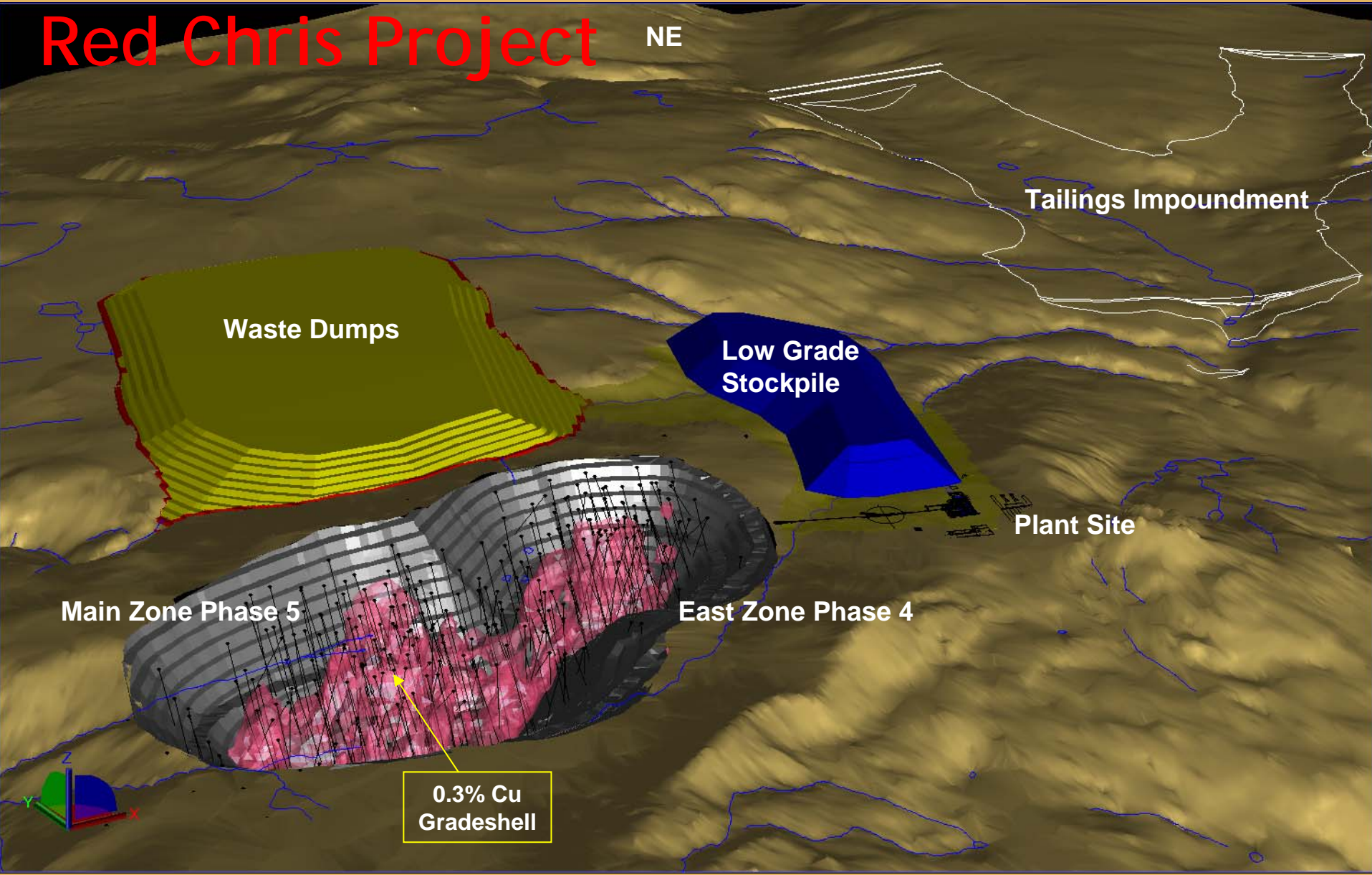


All Blocks >= 0.2% Cu (including inferred)

Block size 20 x 20 x 15 metres

Red Chris Project

NE



Project Development Perspective – End of Pit Operations: Yr 17

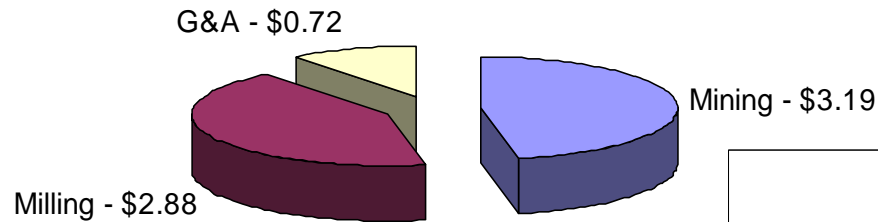
Red Chris Project

Red Chris - Production Statistics

| | ore tpd | ore Mt | Cu % | Au gpt | Recovered to Concentrate | |
|------------------------------|---------|--------|-------|--------|--------------------------|-----------|
| | | | | | Cu lbs | Au oz |
| 1 st 5 yrs | 30,000 | 54.75 | 0.490 | 0.358 | 523,855,000 | 358,023 |
| 1 st 10 yrs | 30,000 | 109.50 | 0.454 | 0.349 | 968,290,100 | 676,932 |
| 17 yrs open pit mining | | 185.40 | 0.414 | 0.324 | 1,486,948,000 | 1,030,500 |
| Life of Mine ore processed | | 275.90 | 0.349 | 0.266 | 1,852,004,278 | 1,186,838 |
| LOM recovery to concentrates | | | | | 87.2% | 50.3% |

Red Chris Project

Years 1-5 Average Site Operating Costs (Cdn\$/tonne milled)



Total: \$6.79 / tonne milled

Base Case:

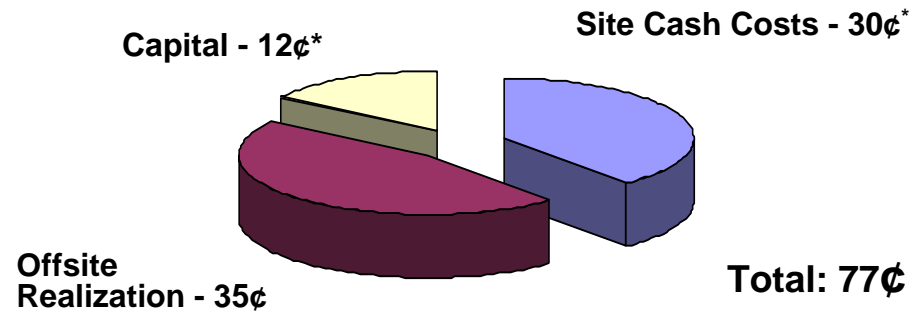
Cu - US\$1.10/lb.

Au - US\$375/oz.

Ag - US\$5.50/oz.

CDN\$1.00 = US\$0.75













Total Costs – Average 1st 5 Years (US ¢/lb Cu)



* Net of gold credit

Red Chris Project

Development Schedule

| | 2003 | 2004 | 2005 | 2006 | 2007 |
|--------------------------------------|--|---|--|------|---|
| Fall 2003 Field Program |  | | | | |
| Resource Audit | |  | | | |
| Summer 2004 Field Program | |  | | | |
| Detailed Feasibility Study | |  | | | |
| Application for Environ Assess Cert |  | | | | |
| Environmental Review / Approval | |  |  | | |
| Outokumpu HydroCopper™ Testwork | |  | | | |
| Project Financing | | |  | | |
| Mine and Plant Construction | | |  | | |
| Pre-Production Stripping | | | | |  |
| Startup commissioning and production | | | | |  |

Red Chris Project

Environmental Baseline Studies

- **6 years of baseline studies**
 - 1994-95 Hallam Knight Piesold
 - 1996-97 Rescan
 - 2003-04 Hatler, McElhanney, Viasat, SRK
- **2005 - Meteorology, Hydrology, Water Quality, Wildlife, Aquatic Resources, Fisheries, Vegetation, ARD**

Red Chris Project

EA Process Update

| | |
|--|---------------------------|
| Project Description (Submitted) | October 27, 2003 |
| Project Accepted for Review | November 28, 2003 |
| Draft Terms of Reference (Submitted) | March 30, 2004 |
| Local Community Open Houses (Stewart, Iskut, Dease Lake, Telegraph Creek) | May 13 – 16, 2004 |
| Final Terms of Reference (Approved) | June 18, 2004 |
| Application for Environmental Assessment Certificate (Filed) | |
| • 30 day screening period | September 24, 2004 |
| AEAC (Accepted for review) | November 2, 2004 |
| • 180 day review period (to Apr 30, 2005) | |

Red Chris Project

EA Process Update - *continued*

| | |
|--|---------------------------------------|
| Local Community Open Houses (Stewart, Iskut, Dease Lake, Telegraph Creek) | December 6 – 9, 2004 |
| Public & Agency Comment Review Period | Nov. 17, 2004 to Jan. 21, 2005 |
| Process “Pause” | April 11, 2005 |
| <ul style="list-style-type: none">• To address First Nations issues | |
| EAO Recommendation Report to Ministers (Plan) | May 31, 2005 |
| <ul style="list-style-type: none">• Up to 45 day approval period | |
| EA Approval (Plan) | June 30, 2005 |
| Access Road SUP (Plan) | July 15, 2005 |
| Mines Act Pre-Production Permit (Plan) | July 15, 2005 |

Red Chris Project

First Nations

- **The Red Chris Project is in Tahltan traditional territory**
- **bcMetals signed MOU with the Tahltan and Iskut First Nations in January 2004**
- **bcMetals is working with the Tahltan and Iskut First Nations with the objective to enter into a development cooperation agreement**
- **Tahltan are active and knowledgeable in mining**
 - **Golden Bear and Eskay Creek mines**
- **Tahltan Nation Development Corporation – Est. 1985**

Red Chris Project

Land Use Planning

- Cassiar Iskut-Stikine Land and Resource Management Plan
- Approved by Cabinet Oct. 11, 2000
- 5.2 million hectares of the Stikine River watershed in NW BC
- 3 management levels:
 - General
 - Area Specific
 - Protected

Cassiar Iskut-Stikine Land and Resource Management Plan



bcMetals

Red Chris Project

Protected Areas

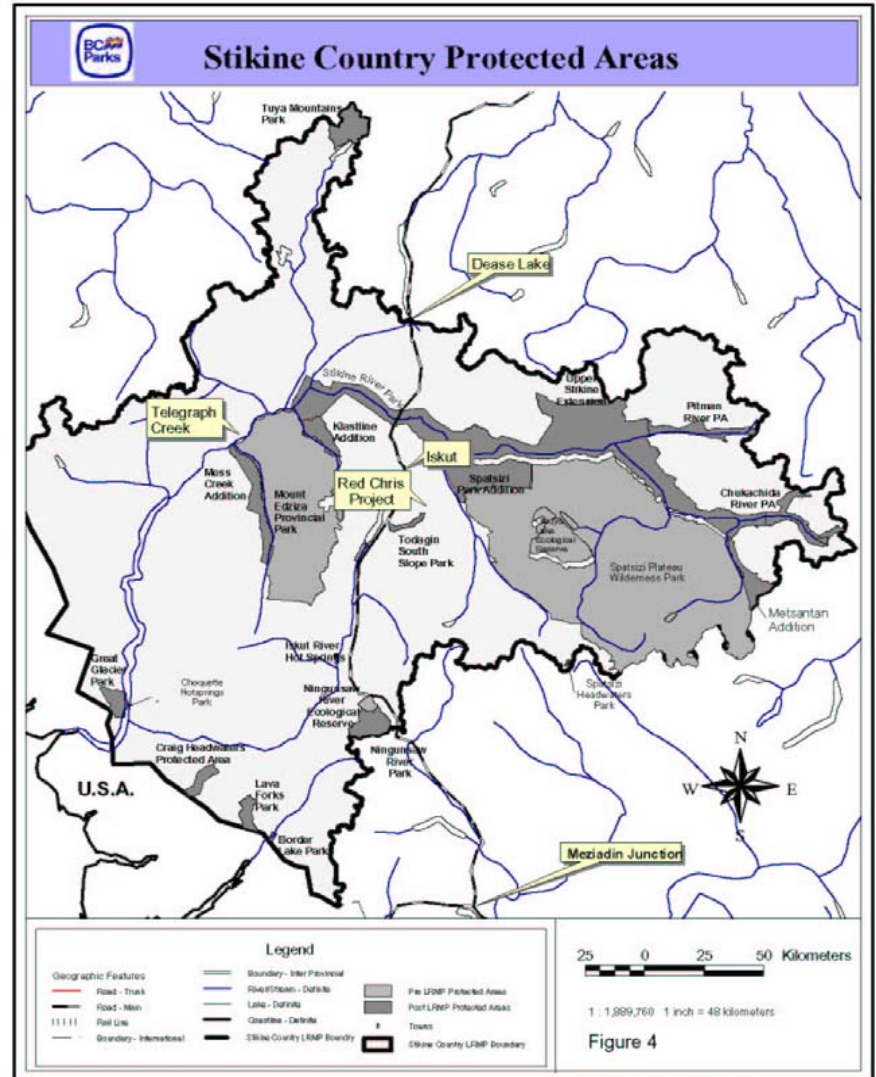
- 1,373,000 ha
- 26.2% of LRMP

Red Chris Claims

- 11,000 ha
- 0.2% of LRMP

Red Chris Mine

- 990 ha
- 0.019% of LRMP



Red Chris Project

- Red Chris has been designated for mineral development within the LRMP
- This was a major consideration in bcMetal's decision to acquire & develop the Red Chris porphyry copper-gold project

Red Chris Project

**What will Red Chris do for the
Bulkley Valley – Stikine Community?**

Red Chris Project

Socioeconomics - Employment

- **500 contract employees during construction**
- **250+ direct employees during operations**
- **50-60 indirect full-time contractors during operations**
- **750 spin-off jobs in BC (3:1 multiplier)**
- **On-site Camp Accommodations**
- **Local Residents – bussed to site**
- **Others – flyin/flyout &/or bussed to site**

Red Chris Project

Socioeconomics – Contracting Opportunities

- **Surveying**
- **Road construction and maintenance**
- **Logging**
- **Concrete supply and construction**
- **Earthworks**
- **Drilling and blasting**
- **Catering and Housekeeping**
- **Casual labour**
- **Mobile equipment**
- **Bus service**
- **Commercial or charter airline & helicopter service**
- **Commercial or charter airline & helicopter service**
- **Concentrate haulage**
- **Bulk carrier loading**
- **Fuel supply (Gasoline, Propane, Diesel)**
- **Food and catering supplies**
- **Stationary & office supplies**
- **Radio communication (mobile, satellite)**
- **Environmental monitoring**
- **Expediting**

Red Chris Project

Government Infrastructure Support for North Western B.C

Mining Plan, January 2005

Action 35:

Pursue strategic investment opportunities in unserviced areas to secure long-term delivery of energy supply and transportation infrastructure

Red Chris Project

Transportation

Highway 37 Strategy (Hwy 16 to Yukon border)

~ \$40 million total committed

- Kitwanga to Bob Quinn maintenance yard at 100% capacity
- Bob Quinn to Iskut upgrade to 100% during 2005 season
- Red Chris will be able to haul at 100% axle loading at startup in Q3 2007.
- \$30.3 million remaining budget for 2005/2008

Red Chris Project

Power

- Extension of North American Electrical Power Grid from Meziadin Junction to Iskut (Phase I)
- 138kV built on 287kV Structure
- Subsequent Phases:
 - Skeena Substation to Terrace 287kV
 - Entire Skeena to Iskut energized at 287kV
 - Extension of Power Grid to Dease Lake
- BCTC planning in progress
- Government approval pending

Red Chris Project

New Investments, New Jobs for Northwest BC

| | |
|---|----------------------|
| Average # of full time employees | 250 |
| Indirect employment | 750-1,000 |
| Construction costs | \$228 million |
| Operating costs (LOM) | \$1.6 billion |
| Provincial Revenues (LOM) | |
| Property taxes | \$25 million |
| BCHydro Power charges* | \$275 million |
| Sales & fuel taxes | \$40 million |
| Income and mining taxes | \$126 million |
| Employee income taxes | \$56 million |

* Basis current .0273 cents per kWh + demand charges

Red Chris Project

bcMetals' targets in '05 . . .

Complete Concentrate Off-Take Agreement

Environmental Assessment Certificate

Complete Project Financing

Power line construction started

23 km mine access road construction

Start mine construction

Higher "C" share price

Implement principals within executed Tahltan 'MOU'

bcMetals is:

- A public company listed on the TSX-V under the symbol “C”; commenced trading August 22, 2003
- Head office in Vancouver, BC
- Red Chris Project 100% owned and operated by Red Chris Development Co. Ltd. (“RCDC”)
- RCDC a wholly owned subsidiary of bcMetals Corporation
- bcMetals’s senior officers & directors have more than 150 years experience in the development of large scale mining projects around the globe including Africa, North and South America, Russia, CIS, China & Pacific Rim countries

bcMetals

Founders - Bob Buchan and Carl Zuber

DIRECTORS

- Bob Buchan - Quest Capital (formerly CEO Kinross Gold)
- John R.W. Fox - President, Laurion Consulting Inc
- Barry Hassen - President, Hassen Technologies
- David Kotula - past President, Prophet Minerals Corp
- Doug M. MacLellan - Torch Energy Advisors
- Ian Smith - President and Chief Operating Officer
- Jay Sujir - Partner, Anfield Sujir Kennedy & Durno
- Carl Zuber - Chairman and Chief Executive Officer

**To the City of Stewart,
Organizers and Conference Attendees
of the Minerals North Conference,
Stewart, April 28, 2005**

Thank You

bcMetals