



SERENGETI  
RESOURCES INC.

TSX.V: SIR

A mineral exploration company  
creating shareholder value  
through grassroots discovery

Minerals North April 2009

## ***Forward Looking Statement***

**This document contains "forward-looking statements" within the meaning of applicable Canadian securities regulations. All statements other than statements of historical fact herein, including, without limitation, statements regarding exploration results and plans, and other future plans and objectives, are forward-looking statements that involve various risks and uncertainties. There can be no assurance that such statements will prove to be accurate, and future events and actual results could differ materially from those anticipated in such statements. Important factors that could cause actual results to differ materially from our expectations are disclosed in the Company's documents filed from time to time via SEDAR with the Canadian regulatory agencies to whose policies we are bound.**

## *Financial Summary* *as of March 31, 2009*

- *Capitalization*
  - Shares o/s           45.0 million
  - Warrants             3.9 million
  - Options              5.2 million
  - Fully Diluted       54.1 million
- *Ownership*
  - Management & Insiders & Founders 15%
  - Institutional ~ 20%
  - Retail ~ 65%
- Current working capital C\$ 8.9 million

## *SIR 2 Year Budget Projections*

• 2009	C\$m
• Opening Cash Balance	9.2
• 2009 budget	-2.7
• 2010	
• Opening Cash Balance	6.5
• Refundable tax credit	+2.5
• 2010 budget	-5.0
• 2011	
• Opening working capital	<u>4.0</u>

**= Rock Solid Stability**

## *Proven Management Team*

A proven team with successful experience in prospect generation; project development; company management; and corporate finance.

David Moore, P. Geo

President & CEO

Myron Osatenko, P. Geo

Chief Geologist

Alec Peck, CA

Chief Financial Officer

George Tikkanen, P.Eng.

Director

Ian Brown, CA

Director

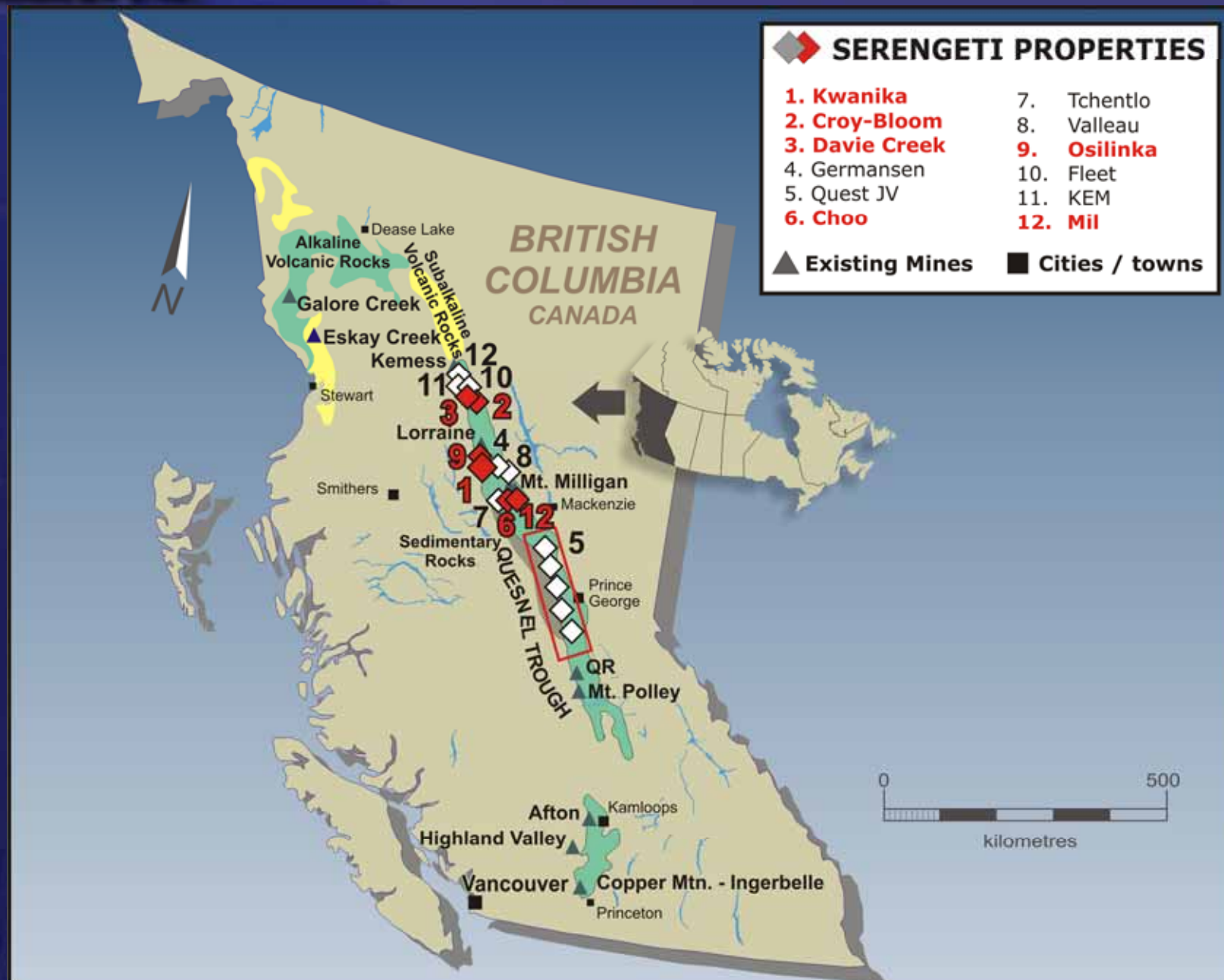
Victor Tanaka, P.Geo.

Director

Lewis Lawrick

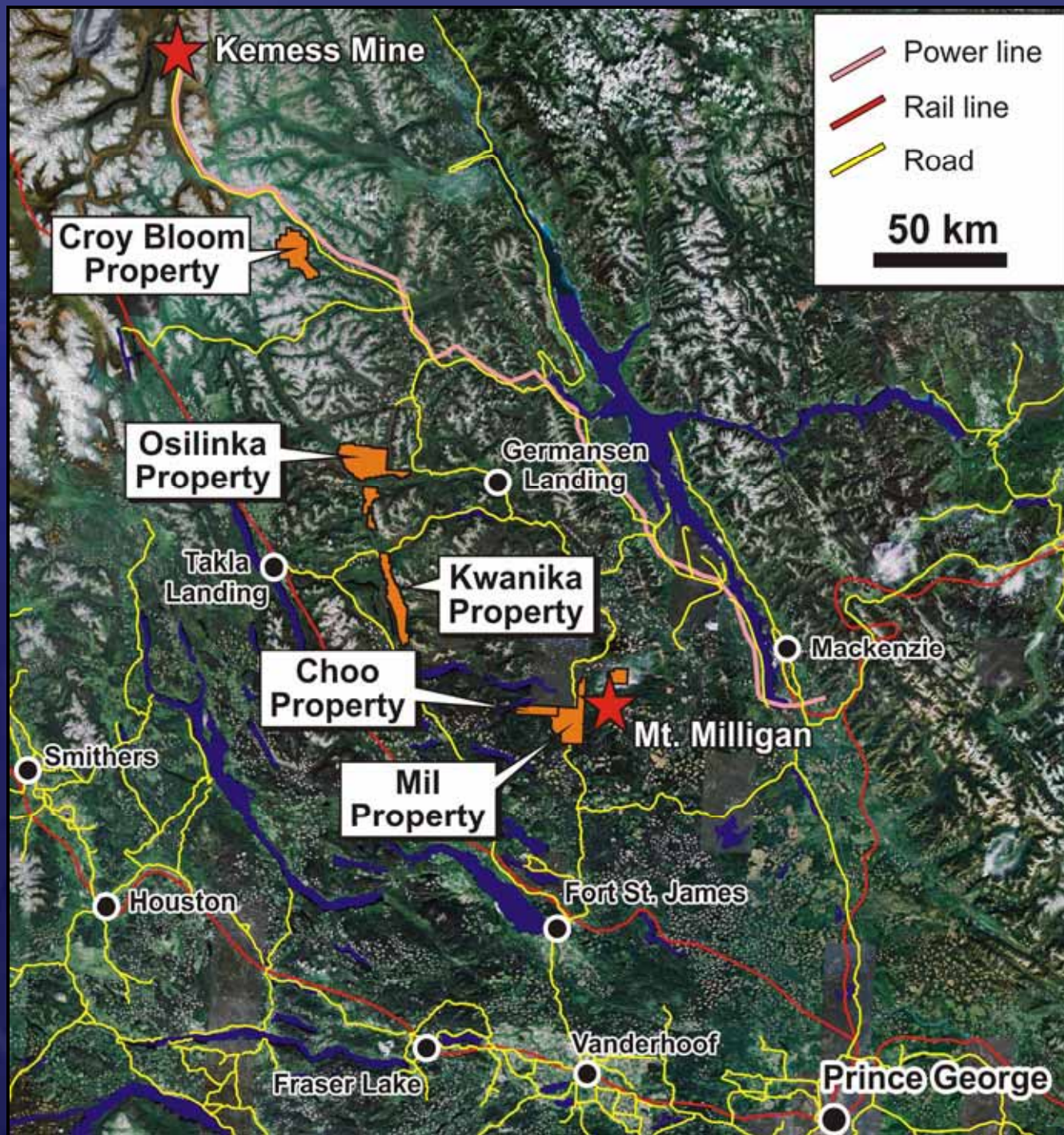
Director





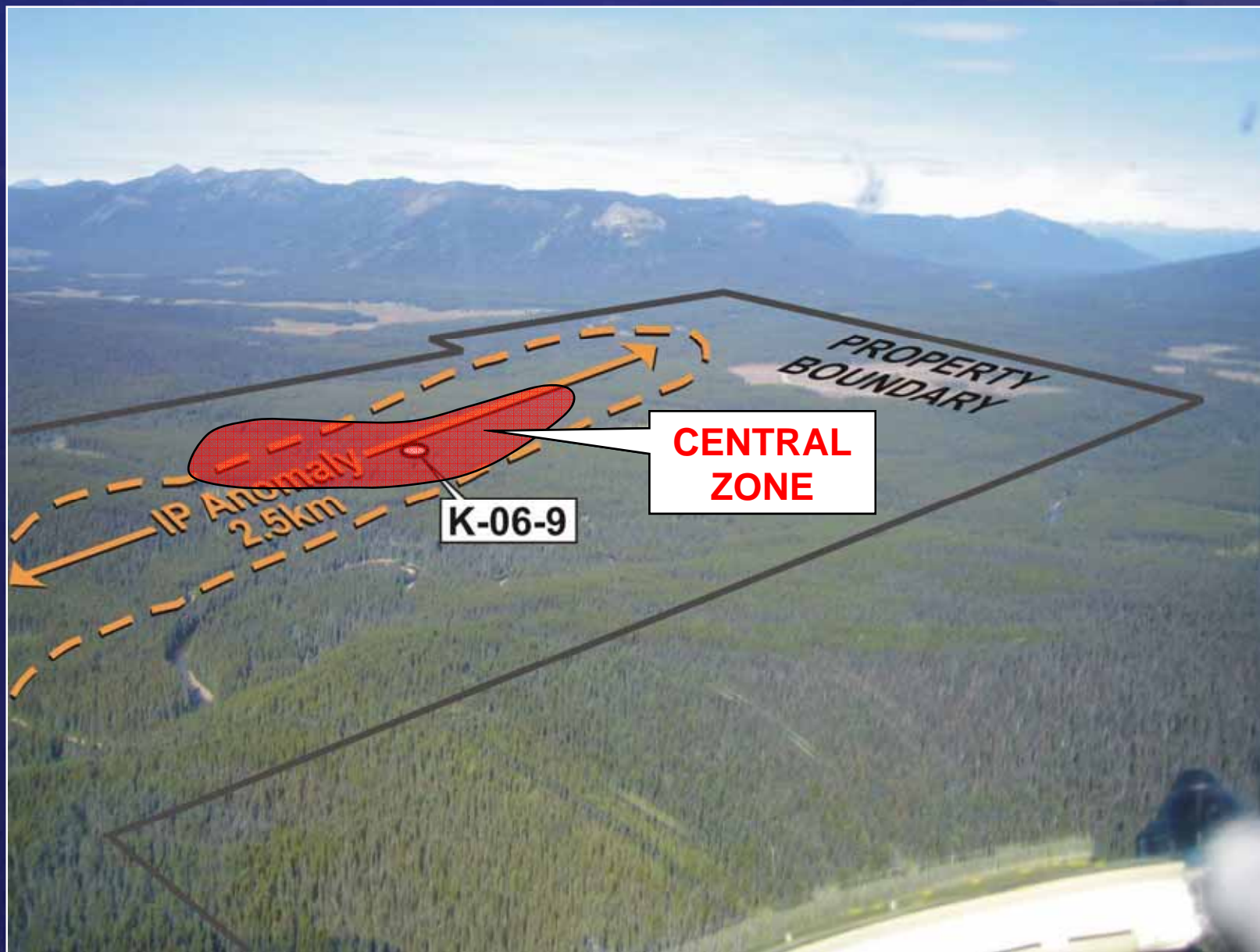


## Location & Infrastructure





# Aerial View of Kwanika Property looking North





## ***Kwanika Central Zone***

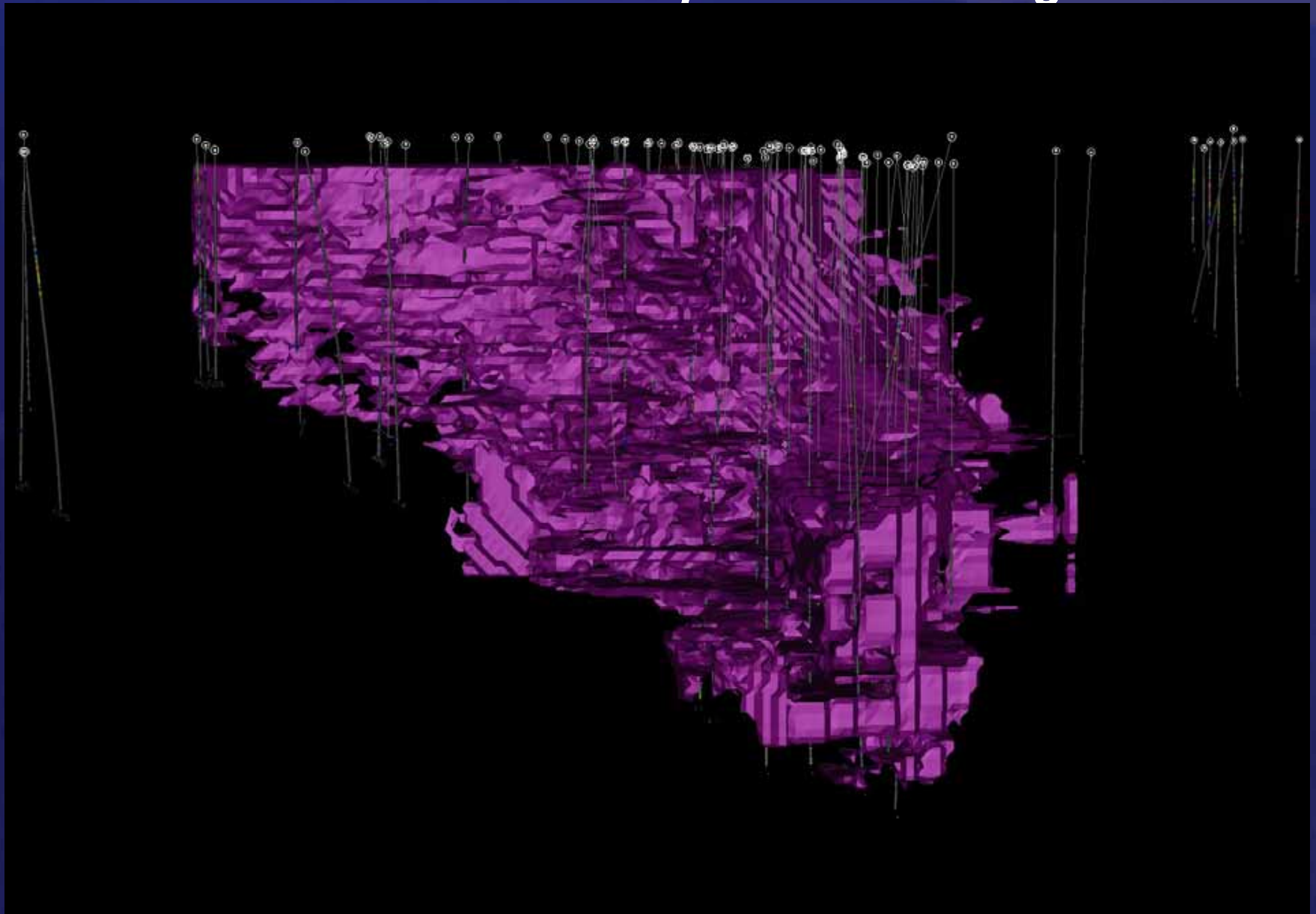
### **Indicated Mineral Resources**

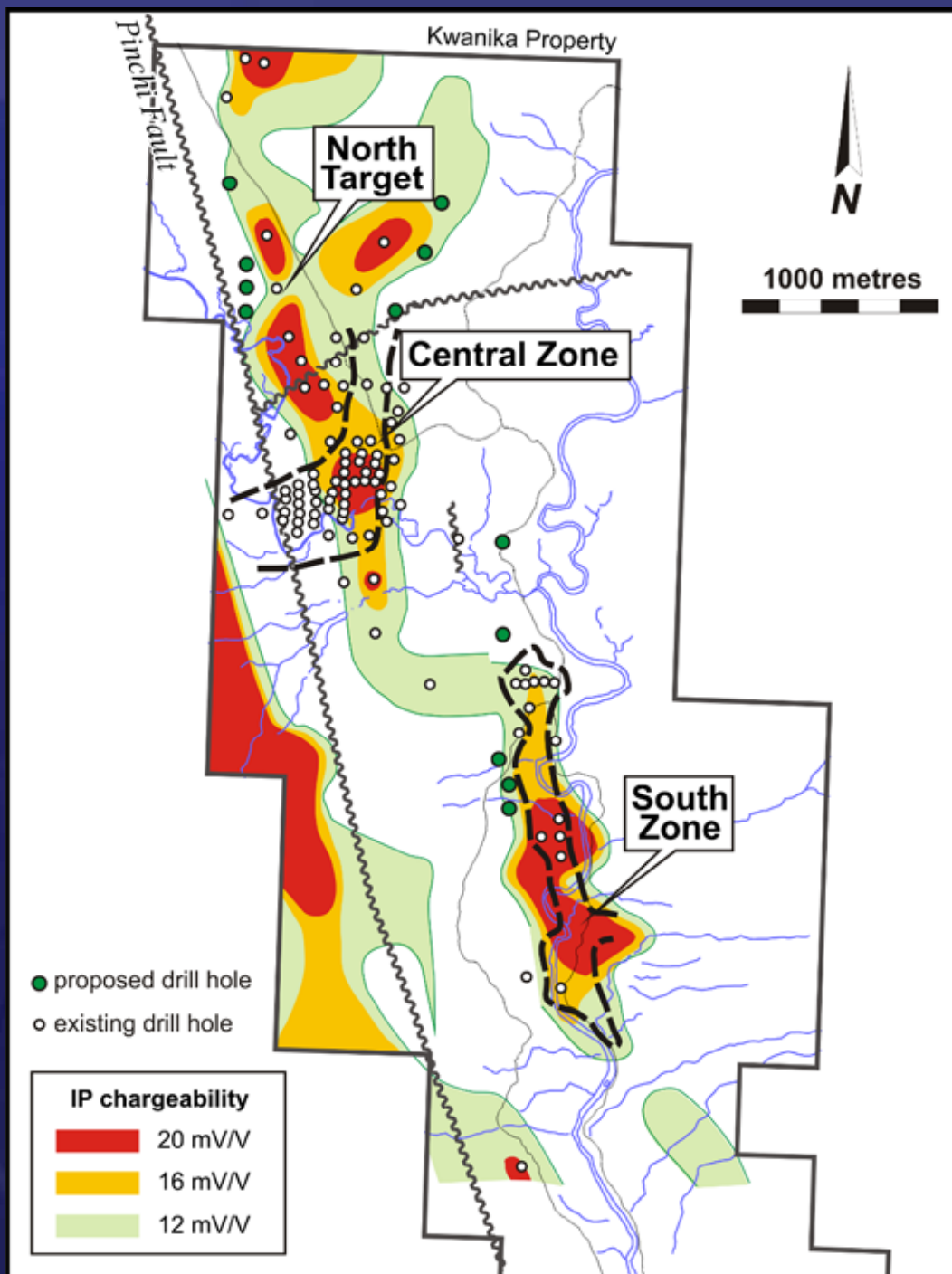
<b>CuEq</b>	<b>Tonnage</b>	<b>Au</b>	<b>Au</b>	<b>Cu</b>	<b>Cu</b>	<b>Cu</b>	<b>Au Eq</b>
<b>% Cut-off</b>	<b>Mt</b>	<b>g/t</b>	<b>M oz</b>	<b>%</b>	<b>M lb</b>	<b>Eq %</b>	<b>g/t</b>
<b>0.40</b>	<b>75.07</b>	<b>0.42</b>	<b>1.015</b>	<b>0.41</b>	<b>684.0</b>	<b>0.69</b>	<b>1.05</b>
<b>0.25</b>	<b>182.63</b>	<b>0.28</b>	<b>1.616</b>	<b>0.29</b>	<b>1,152.6</b>	<b>0.47</b>	<b>0.71</b>

### **Inferred Mineral Resources**

<b>0.25</b>	<b>28.54</b>	<b>0.20</b>	<b>0.181</b>	<b>0.20</b>	<b>122.5</b>	<b>0.32</b>	<b>0.49</b>
-------------	--------------	-------------	--------------	-------------	--------------	-------------	-------------

***Kwanika Resource Block Model Feb 2009  
>0.25% Cu Eq Cut-off Looking East***

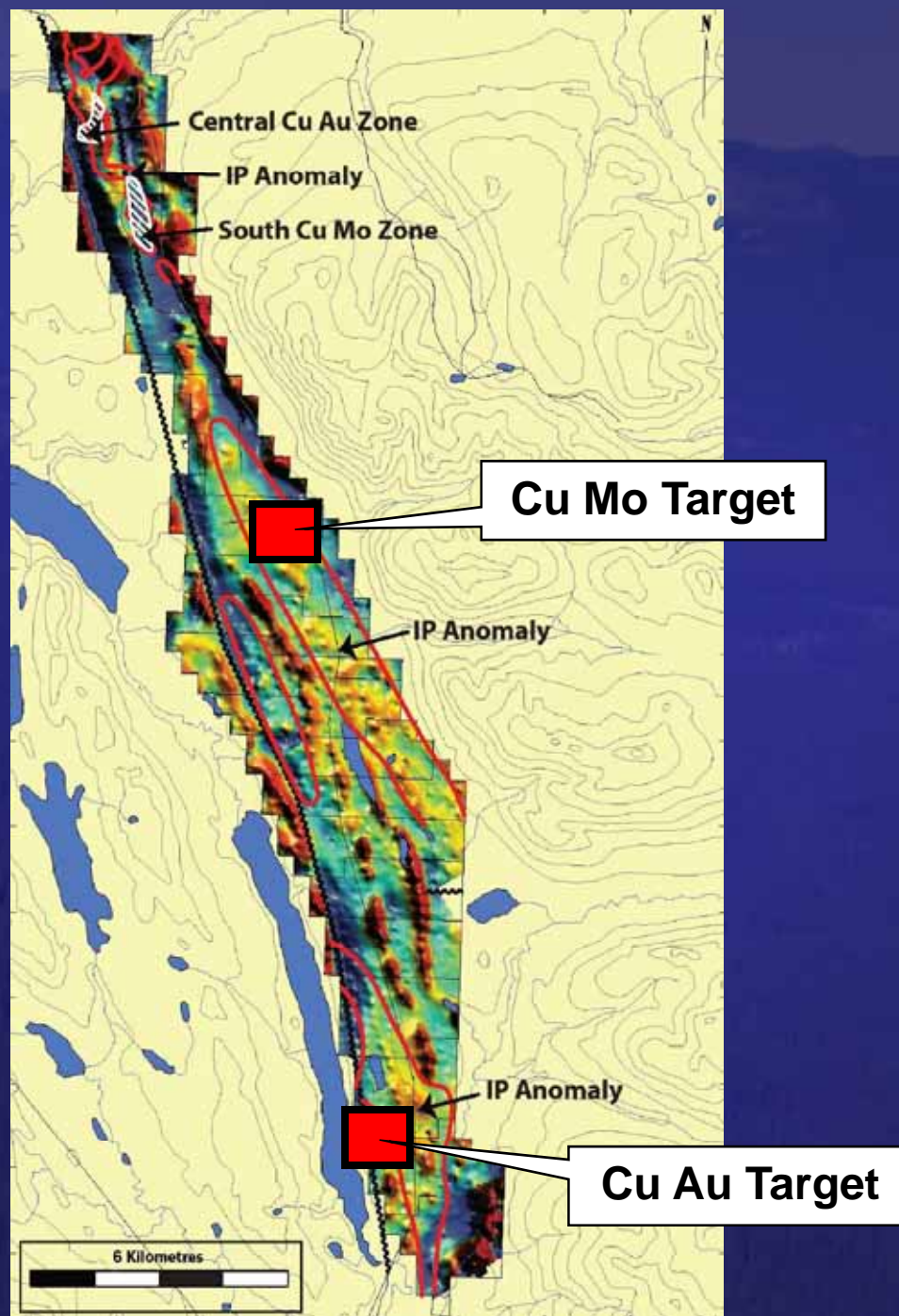




## Kwanika IP Results



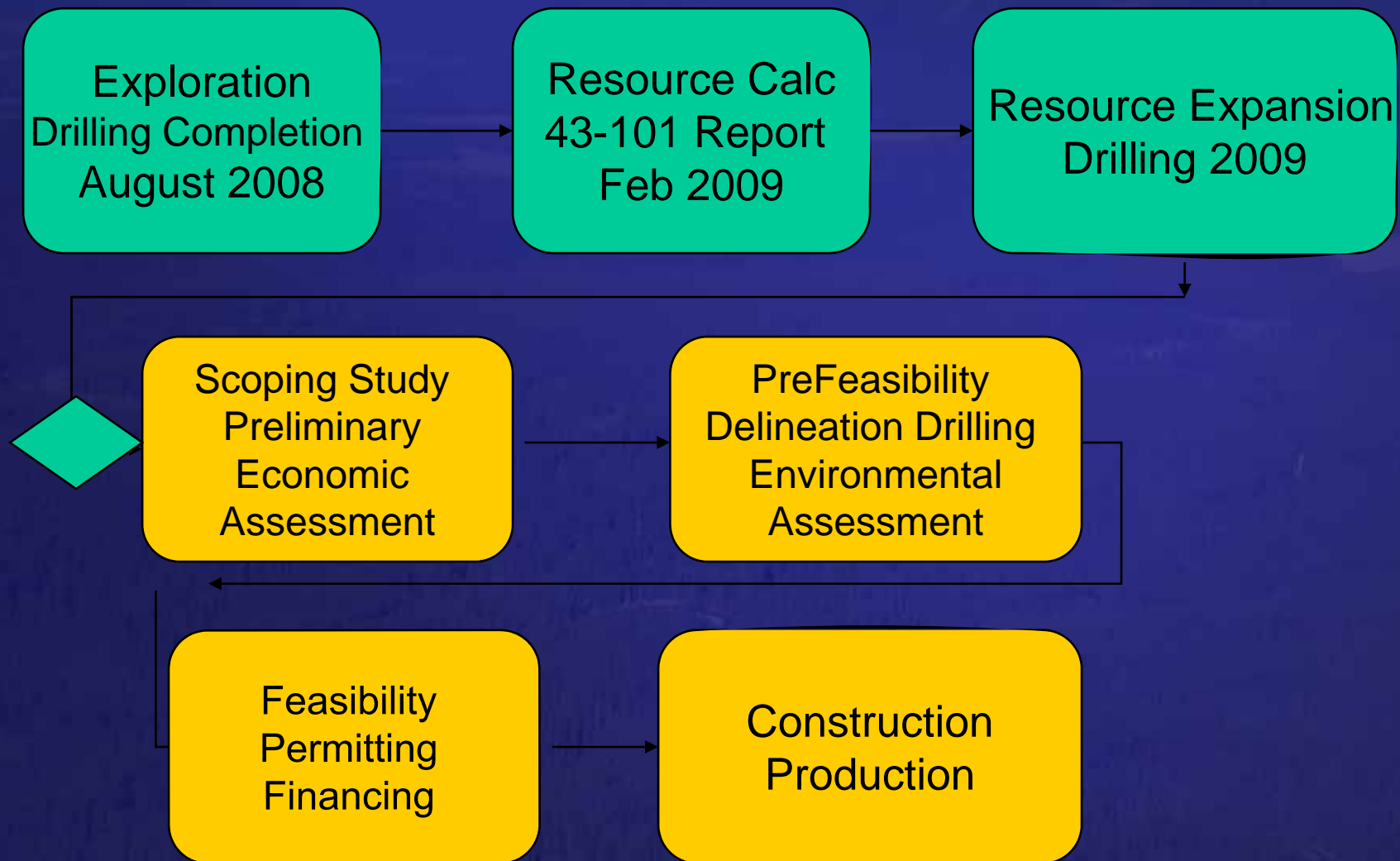
# *Kwanika Exploration Potential*



## ***KWANIKA Project Milestones***

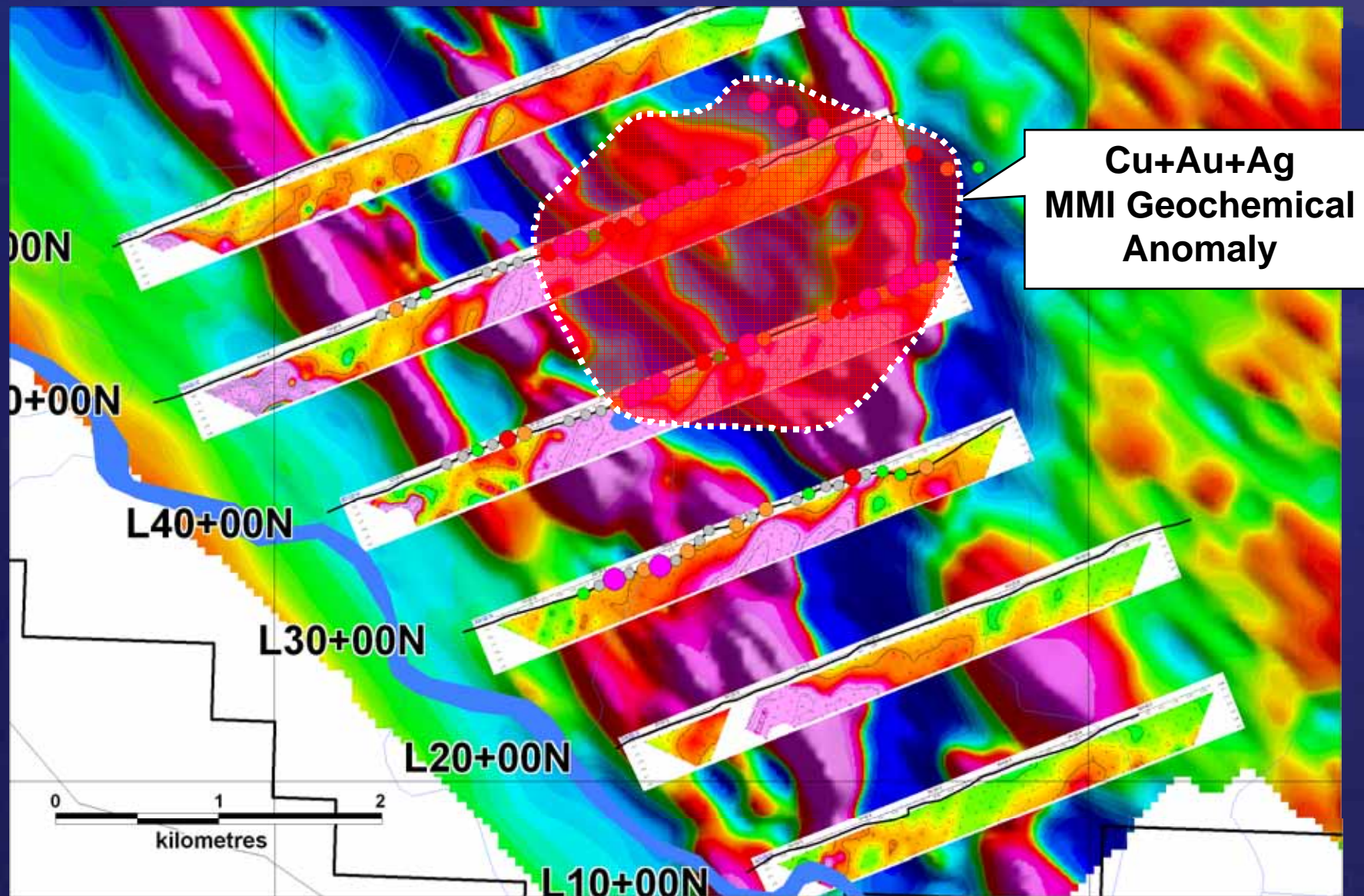
- Discovery Dec 2006
- 56,000 meters drill program completed in 123 holes to August 2008
- Resource Estimate published February 2009 (1.6 million oz Au, 1.1 billion lbs Cu)
- Environmental scoping study completed
- Metallurgical Studies in progress
- Drilling planned (17 holes) on selected high priority targets in 2009

## *Kwanika Project Schedule*

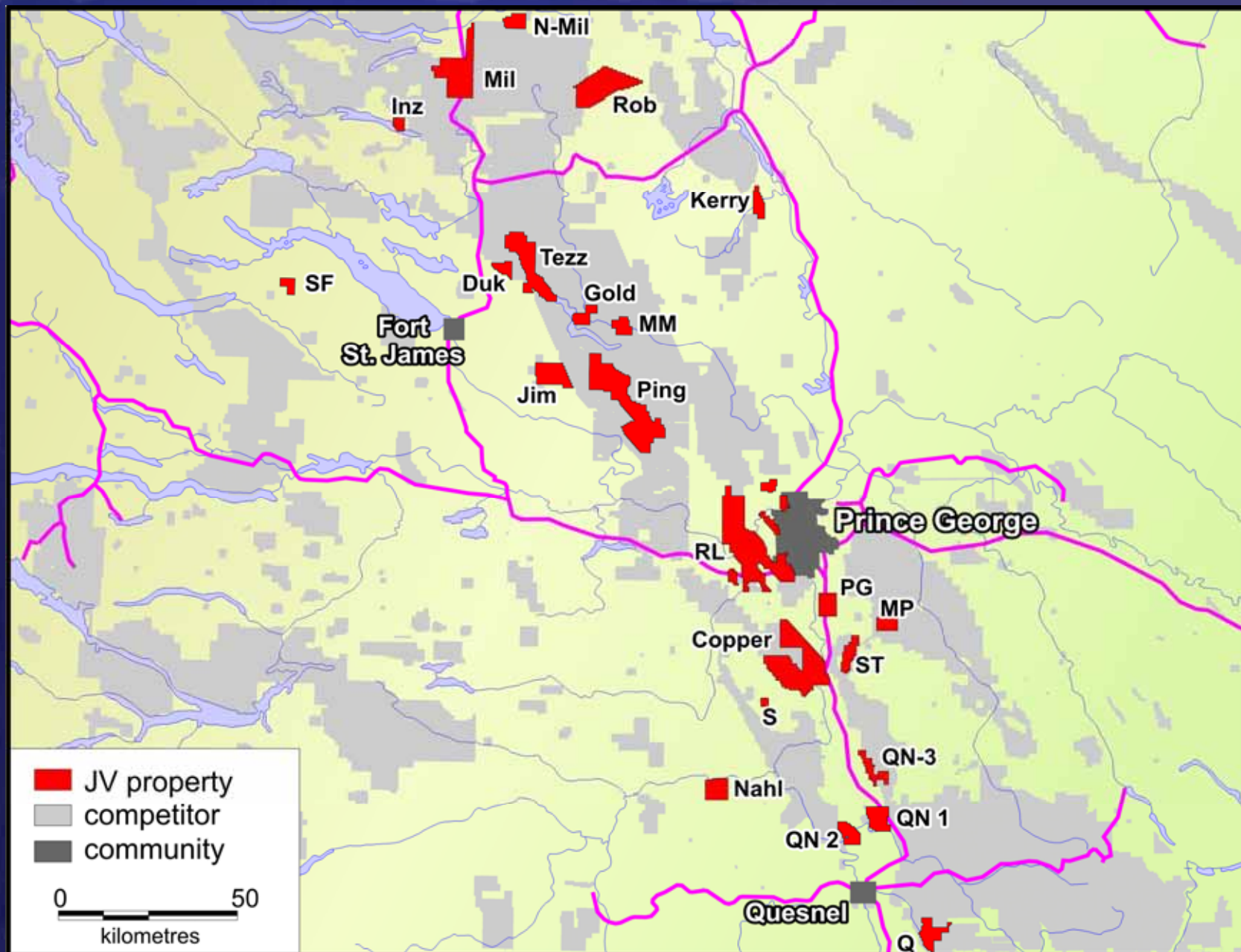




## Osilinka – Compilation

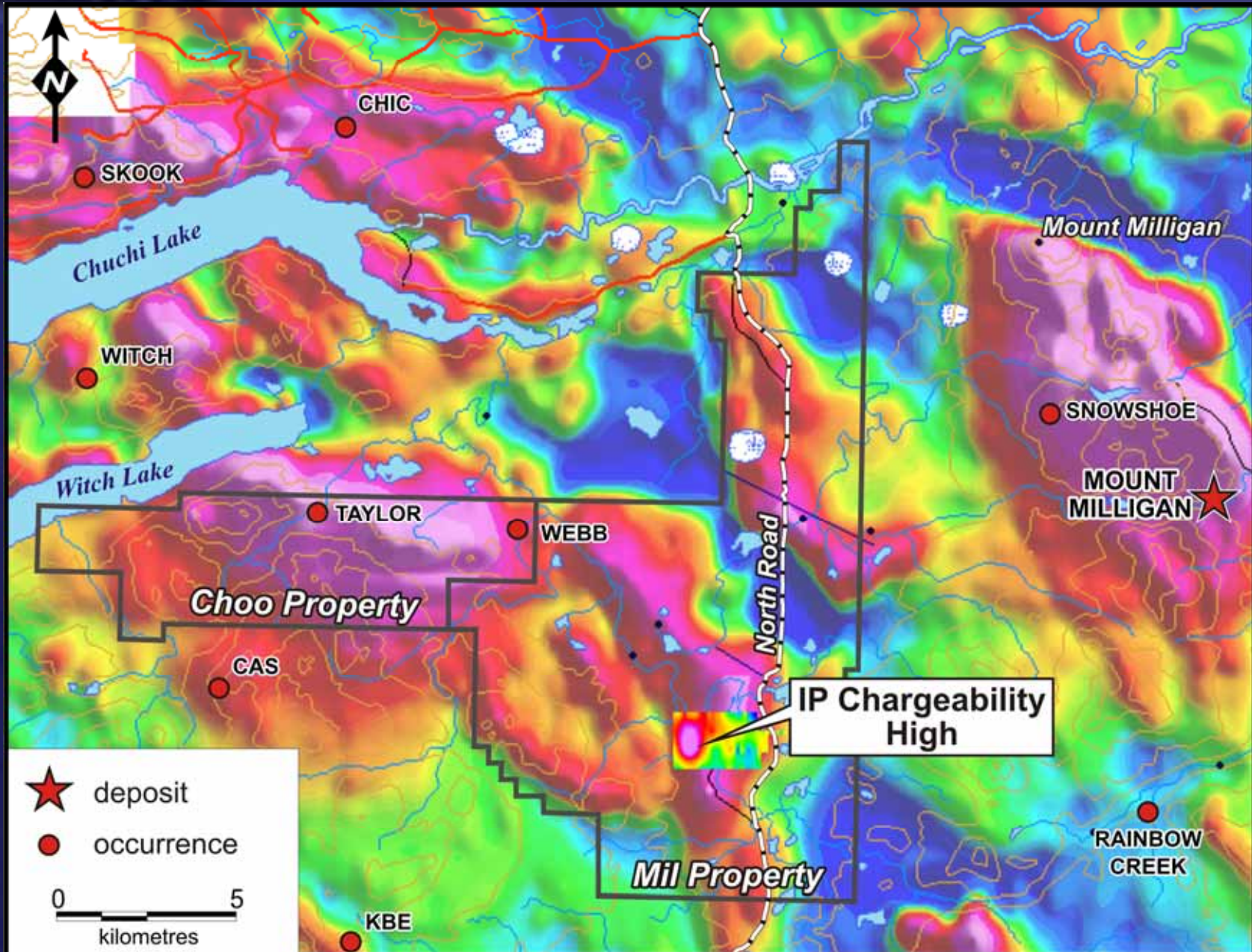


## QUEST JV Land Position





## Mil Property – Regional Aeromagnetics

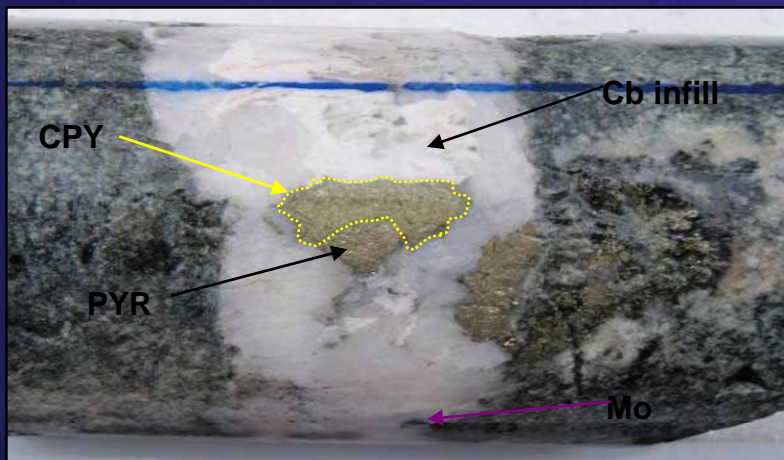




## *Newcrest drilling at Croy Bloom*



- First phase of drill program completed, which was 4 holes totalling 2,473m.
- Drilling tested several large geochemical anomalies and coincident geophysical anomalies
- Follow up drill program planned for summer 2009



## *2009 Exploration Opportunities*

Property	# of Holes	# of Targets	Commodity
Kwanika Central	12	4	Cu Au Mo
Kwanika South	5	2	Cu Au Mo
Osilinka	5	1	Cu Au Ag
Mil	3	1	Au
Choo	2	1	Cu
Total	27	9	Cu Au Mo Ag

## ***Takla Lake First Nation Employment History***

### **Number of employees:**

**2007: 26**

**2008: 44**

### **Total Value Labour:**

**2007: \$307,000**

**2008: \$651,000**





## *Ongoing Community Involvement*

- Impacting ~60 businesses in local business trading area
- \$ 4+ million in locally sourced goods & services including  
    \$1.9 million in 2007  
    \$2.1 million in 2008
- Caledonia Classic Dog Sled Race Sponsor (2008 & 2009)
- Takla Nurses Station Sponsor 2008
- Christmas Turkey Donation Takla Band 2007 and 2008



## ***Thank You to our Project Suppliers***

**1984 Enterprises**

**All North Consultants**

**AltaStream**

**Archer CRM**

**Bandstra Transport**

**BNK Auto**

**Buckley House Holdings**

**Coast Mountain**

**Cyr International**

**Industrial Reproduction**

**Interior Helicopters**

**Macleods True Value**

**Northern Trailer**

**Ouellette Bros.**

**Overwaitea Foods**

**Polar Medical**

**Ruskin Construction**

**DB Mechanical**

**Ecofor Environmental**

**Gary Young Agency**

**Global Discovery Lab**

**Hendex Exploration**

**Russell Transfer**

**Shoppers Wholesale**

**Suspenders General Store**

**Takla Band**

**Tchentlo Lake Lodge**

**Walcott & Associates**

**Xsu-wii-ax Forest Products**