



Mining and Exploration Highlights

Northeast and North-Central British Columbia

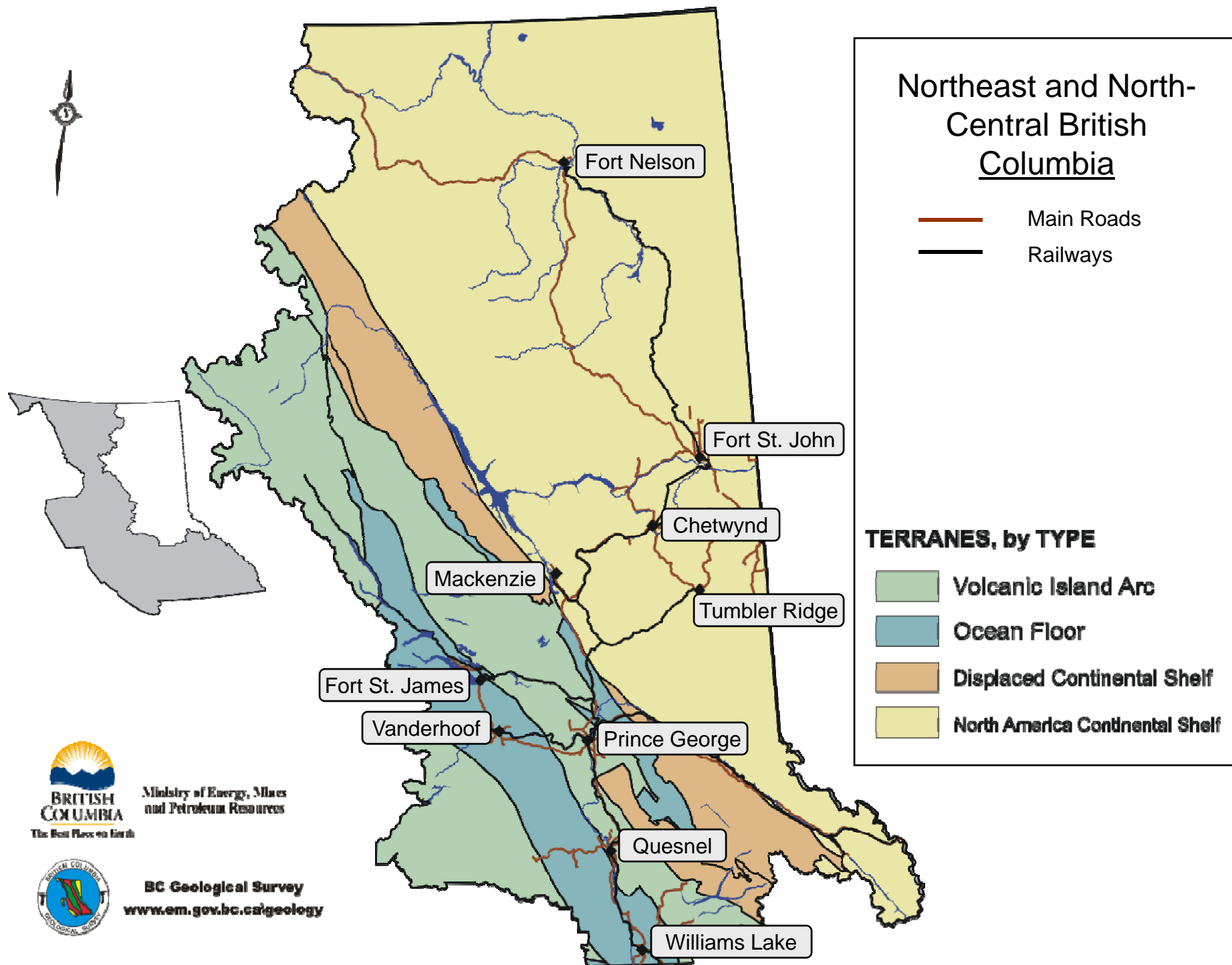
2008 (and early 2009)

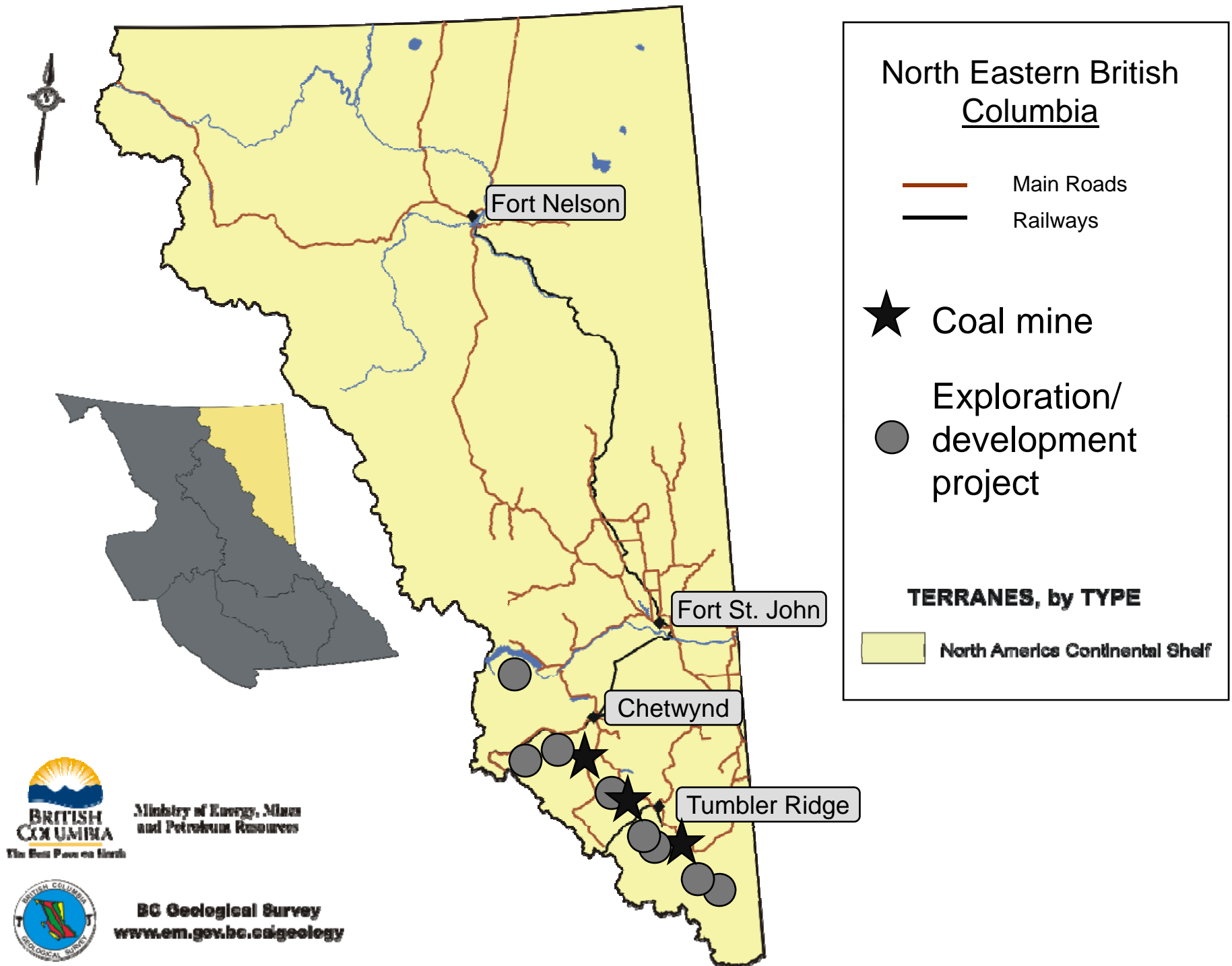
Minerals North

22 April 2009



John R. DeGrace, PEng/PGeo
Regional Geologist
Prince George

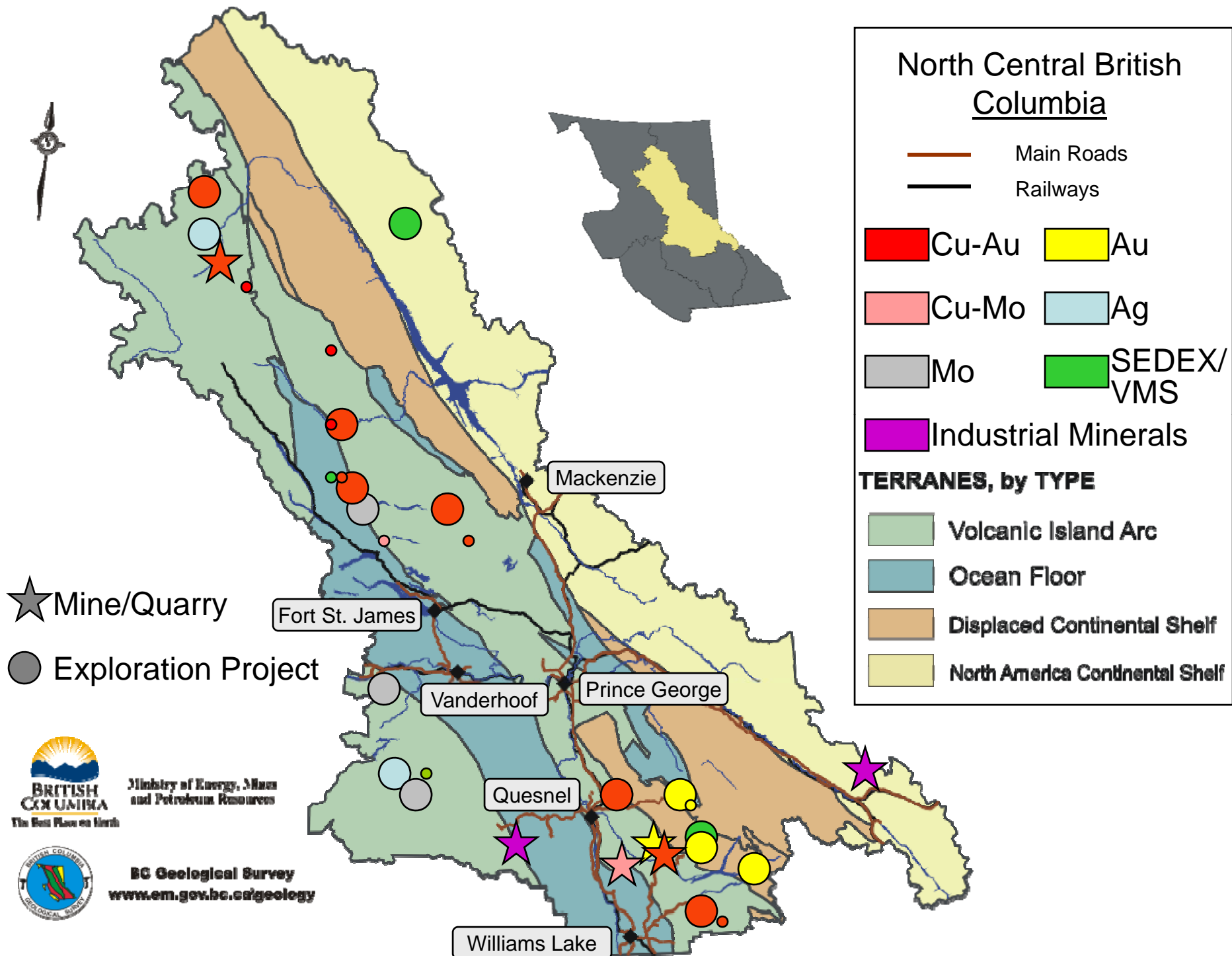






Northeast Region in Review - 2008

- Three open pit mines:
 - Trend: Peace River Coal Limited Partnership
 - Perry Creek and Brule: Western Canadian Coal Corp
- Exploration spending: \$21 million (\$10.5 million in 2007)
- Drilling: 54 800 m (37 400 m in 2007)
- Major projects: 9 (one less than in 2007)
- Environmental Assessment certificate for new Hermann Mine granted November 2008
- 2009 activity level uncertain in the context of coal prices: January 50% cutback at Brule, possible closure of Perry Creek in May



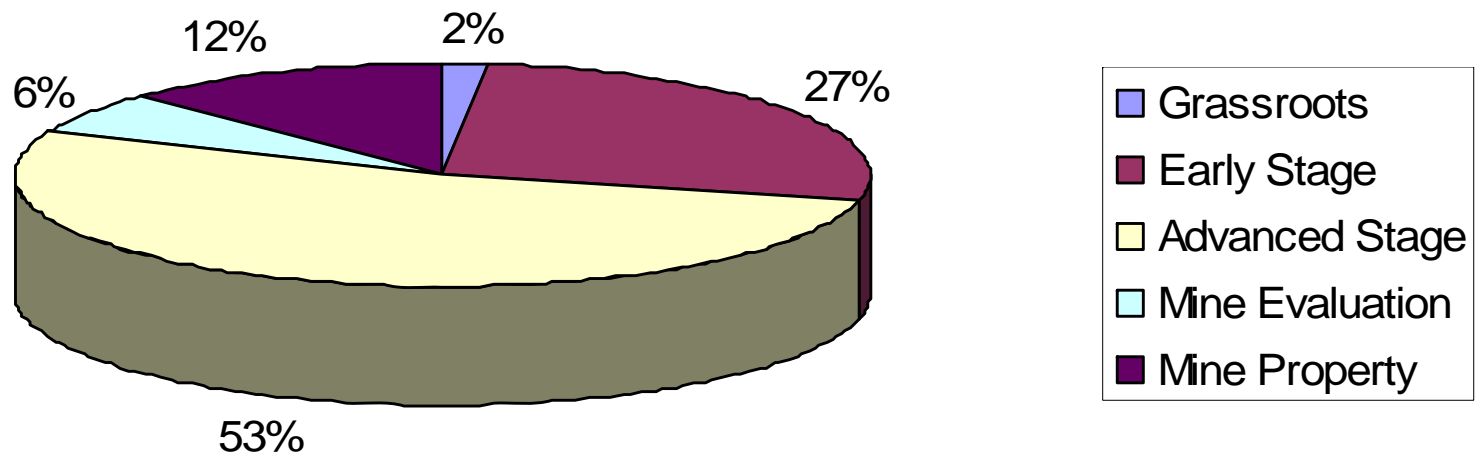


North-Central Region in Review - 2008

- Three open pit mines: Gibraltar, Mount Polley, Kemess
- Two underground mines : QR and Shasta (both currently shut down)
- Exploration spending: \$80 million (\$94.1 million in 2007)
- Exploration drilling: 259 000 m (307 000 m in 2007)
- Significant projects: \$100,000 or greater, 59 (65 in 2007);
\$500,000 or greater, 29; \$1,000,000 or greater, 19
- Major target remains bulk tonnage Cu-Au porphyry deposits in the Quesnel Terrane, and porphyry Mo deposits in the Stikine Terrane
- 2009 will see a reduction in activity; but major players, and some new ones, will continue



2008 Exploration Expenditures by Category – North-Central Region





Region in Review, cont.

Major projects include:

- Woodjam (Cu-Au)
- FraserGold (Au)
- Spanish Mountain (Au)
- Frank Creek (VMS)
- Mouse Mountain (Cu-Au)
- Chu (Mo)
- Capoose (Ag)
- Nithi Mountain (Mo)
- Mt. Milligan (Cu-Au)
- Lorraine-Jajay (Cu-Au)
- Kwanika (Cu-Au-Mo)
- Falcon (Mo)
- Shasta (Ag-Au)
- Porphyry Pearl (Au-Cu)
- Akie (SEDEX)

North Central British Columbia

— Main Roads
— Railways

Cu-Au Au
 Cu-Mo Ag
 Mo SEDEX/VMS
 Industrial Minerals

TERRANES, by TYPE

Volcanic Island Arc
 Ocean Floor
 Displaced Continental Shelf
 North America Continental Shelf



Shasta

Kemess

Mackenzie

Fort St. James

Vanderhoof

Prince George

Nazko

Quesnel

QR

Hunterstone

Gibraltar

Mount Polley

Williams Lake



Ministry of Energy, Mines and Petroleum Resources



BC Geological Survey
www.em.gov.bc.ca/geology



Mount Polley (Imperial Metals Corp)



Mount Polley
grinding & flotation



- Cu-Au-Ag alkalic porphyry
- Reserves 55.6 Mt @ 0.36% Cu, 0.32 G/t Au, 0.66 g/t Ag
- Bell Pit mined out July 2008, Wight pit mined out mid-2009
- Planned underground mining beneath Wight Pit
- Current production focus is Springer Pit
- 2008: 16 200 m on-lease drilling to extend reserves



Gibraltar Mine

(Taseko Mines Ltd)

Blasting/mining
at Gibraltar



- Cu-Mo alkalic porphyry
- Reserves (Dec 2008) 472 Mt @ 0.315% Cu, 0.008% Mo
- Mine life to about 2035
- Phase 2 mill expansion, by about end-2009, will bring mill capacity to 49 800 tonnes/day
- 2008: 33 000 m drilling concentrating on Gibraltar East and Gibraltar West extension



QR Mine

(Cross Lake Minerals)

- Gold skarn related to QR intrusion
- Completed open pit operation in West Pit in July 2008, then moved underground in Midwest zone
- 2008: u/g exploration and 3 500 m drilling
- In October 2008, Procon Construction took on a management role



QR mining equipment
(courtesy Cross Lake Minerals)



Kemess Mine

(Northgate Minerals Corp)



Moving low grade ore at Kemess

- Cu-Au porphyry deposit
- Total reserves 51.8 Mt @ 0.17% Cu and 0.47 g/t Au
- 2008 projected production 27 669 tonnes Cu, 5 925 kg Au
- Projected mine life to 3rd quarter 2011
- 2008: IP survey north of tailings dam



Shasta

(Sable Resources Ltd)

- Ag-Au in quartz vein stockwork, 800 m+ strike length
- 2008 concentration was on Creek zone, with erratic results
- Better results obtained from D and JM zones
- Ore transported to Baker Mill, about 11 km away



Hosing down a stope following a blast



Nazko Quarry

(Lightweight Advanced Volcanic Aggregates Inc)



Nazko products
and operation



- Small-scale producer of lightweight aggregate and scoria for BBQ rock, construction, landscaping
- About 44 Mt resource
- Produces about 50 000 tonnes/year
- Ships to western Canadian customers by truck, rail



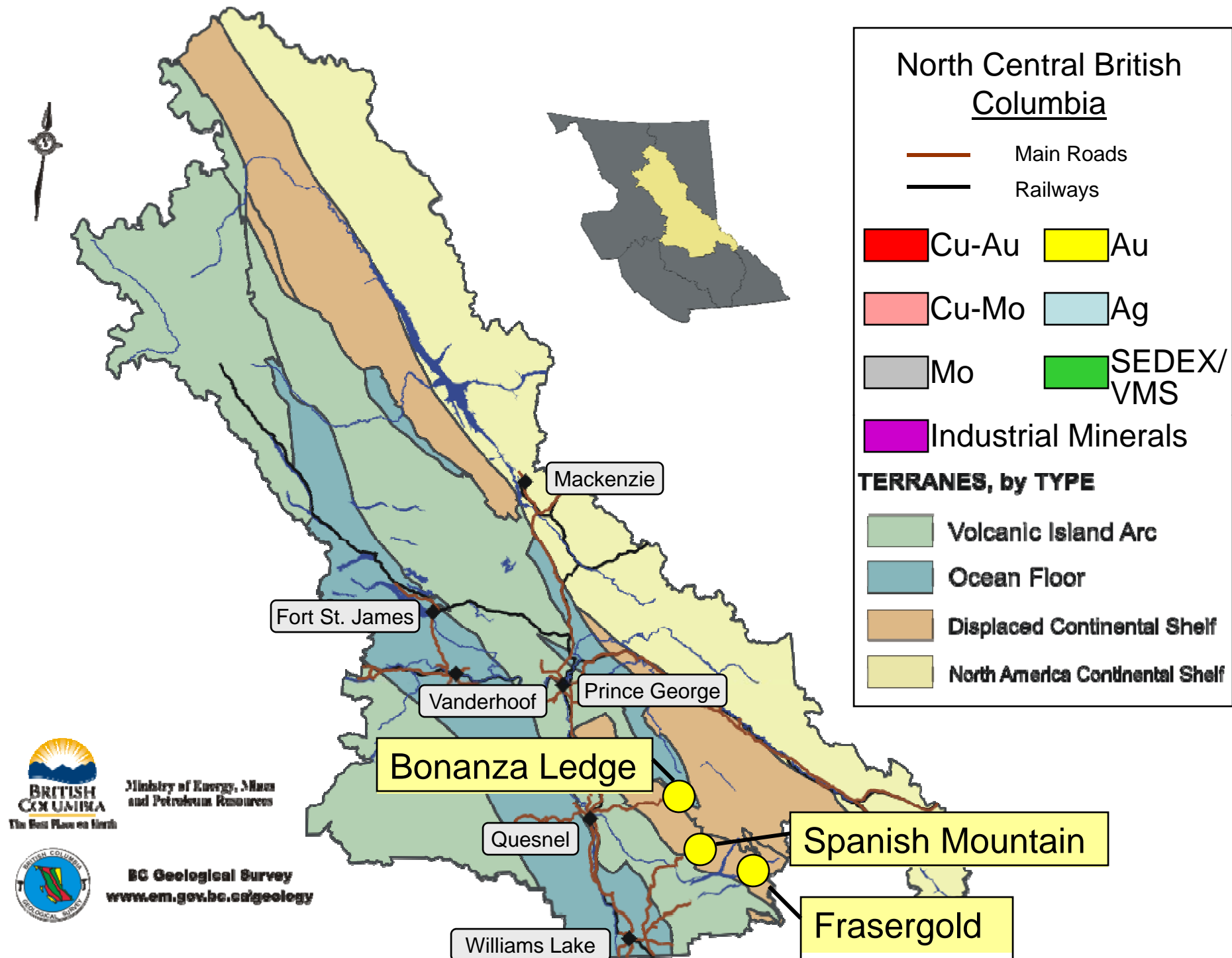
Hunterstone Quarries



- Small-scale producer of specialty natural building stone from quartzite talus
- Ships to customers in Canada and USA

Photos courtesy of
Hunterstone







FraserGold

(Hawthorne Gold Corp)

- A meta-SHV gold deposit in deformed Quesnel River Group “knotted phyllite” host
- Particulate gold mostly in quartz veins, stringers etc.
- 2008: 10 400 m drill program
- 31 of 58 holes completed contained visible gold
- NI 43-101 resource estimate to come



Examining “knotted phyllite” in the FraserGold core shack



Spanish Mountain (Skygold Ventures Ltd)

- “SHV” Au deposit in complexly-deformed graphitic argillite/mudstone
- March 2009: NI 43-101 report on Main Zone, indicated 102.26 MT @ 0.785 g/T, inferred 11.65 MT @ 0.787 g/T, 0.50 g/T cutoff for both
- 2008: 40 000 m drilling concentrated on the “Main zone”
- 2009: drilling to extend Main Zone to north, south and at depth



Geologist Roger MacDonald, and Main Zone core grading 33 g/t Au

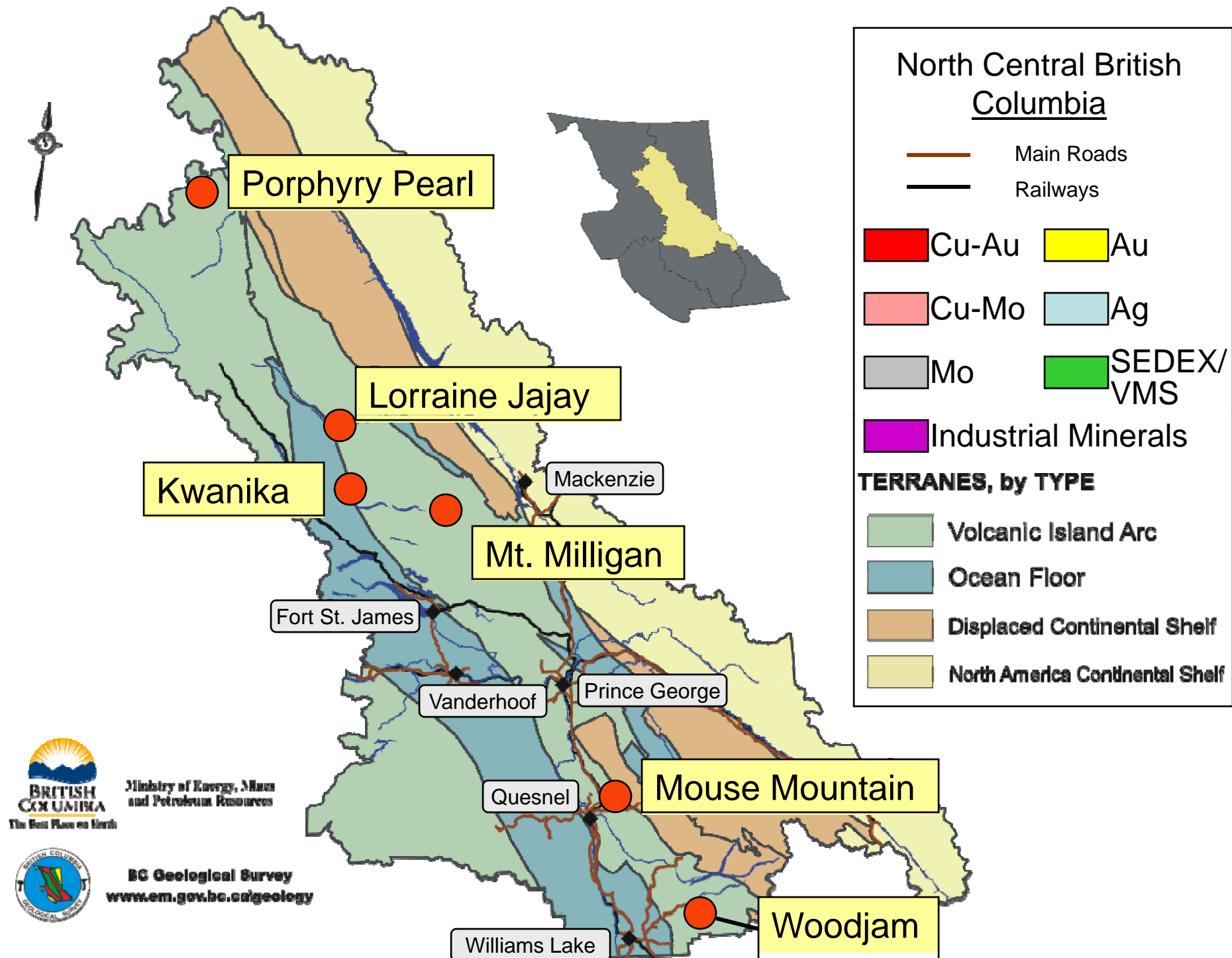


Bonanza Ledge, Cariboo Gold (International Wayside Gold Mines Ltd)

- Bonanza Ledge a mesothermal vein Au deposit
- Intent is to apply to open a small, seasonal open-pit mine
- 2008: 2 740 drill program to extend resource
- Cariboo Gold has had an Environmental Assessment process underway since 2000
- Would exploit a vein and replacement Au deposit by open-pit



Winter drilling at Bonanza Ledge





Woodjam

(Fjordland Exploration Inc)



Mineralized core, hole 08-83

- A Cu-Au-Mo porphyry deposit
- 2008 activities concentrated on the “Southeast zone” discovered in 2007, with every hole drilled to date bottoming in mineralization
- Hole 08-84 returned 0.93% Cu and 0.40 gm/t Au over 129 m
- Drilling started on the newly-discovered “Deerhorn zone”
- 2008: 7 400 m drilling completed



Mt. Milligan

(Terrane Metals Corp)



Jim Logan
examining core

- Alkalic porphyry Cu-Au deposit
- Measured + indicated resource 591 million tonnes @ 0.193% Cu, 0.352 g/t Au
- Mine plan is for 60,000 t/day processing over a 15-year mine life
- EA Certificate issued 18 March. Mines Act permit application underway.
- Updated feasibility study expected late 2009



Mineralization in hole
07-974, 258 m



Kwanika

(Serengeti Resources Inc)



Viewing core at Kwanika

- Cu-Au-Mo alkalic porphyry
- Mineralized system in three zones, oriented NNW, 750 m long by 200 m across and up to 500 m deep
- 2008: 30 000 m drilling, IP, geochemistry
- Feb 2009: NI 43-101 estimated 182.6 Mt @ 0.29% Cu, 0.28 g/t Au (0.25% Cu Eq cutoff) indicated resource

North Central British Columbia

— Main Roads

— Railways

Cu-Au Au

Cu-Mo Ag

Mo SEDEX/VMS

Industrial Minerals

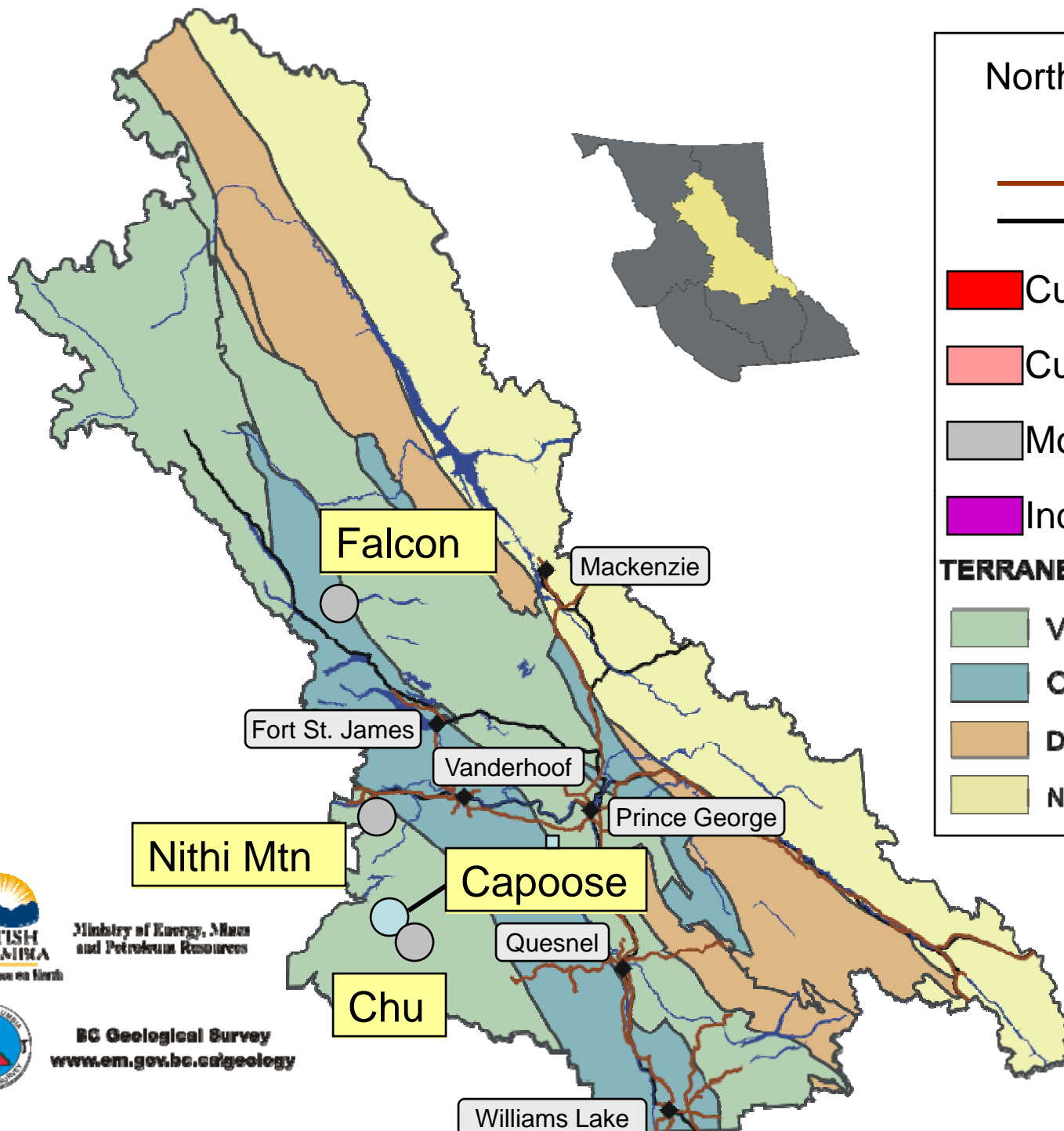
TERRANES, by TYPE

Volcanic Island Arc

Ocean Floor

Displaced Continental Shelf

North America Continental Shelf





Chu (TTM Resources Inc)

- Mo porphyry hosted by hornfelsed siltstone
- Mineralized zone 2 km NW-SE, 300m wide and 650 m deep, still open at depth and to SE
- 2008: 48 000 m drilling and 3D-IP survey
- NI 43-101 estimate in March 2009 of 139.9 MT measured @ 0.061% Mo with a cutoff of 0.04% Mo

Molybdenite on quartz selvage, hole 16



Drill on NW zone



Capoose – Silver Trend (Silver Quest Resources Ltd)



Setting up at Capoose

(courtesy Silver Quest/Dave Pawliuk)

- Disseminated Ag-Au (minor Pb, Zn) in volcanic and sedimentary host rocks in 2 mineralized zones, possibly connected at depth.
- 2008: 1 596 m drilling following-up encouraging IP and geochemical anomalies
- Updated resource estimate planned for early 2009



Nithi Mountain

(Leeward Capital Corp)

- A porphyry Mo deposit in a potassically-altered quartz monzonite setting similar to Endako, 18 km to the west
- Several mineralized zones in a 4 km x 2 km area at least 200 m deep
- Sep 2008: Inferred resource estimate 165.25 million tonnes @ 0.026% Mo using a 0.020% cutoff
- 2008: 10 500 m drilling focussed on Delta zone



Molybdenite seam in Nithi Mtn. core



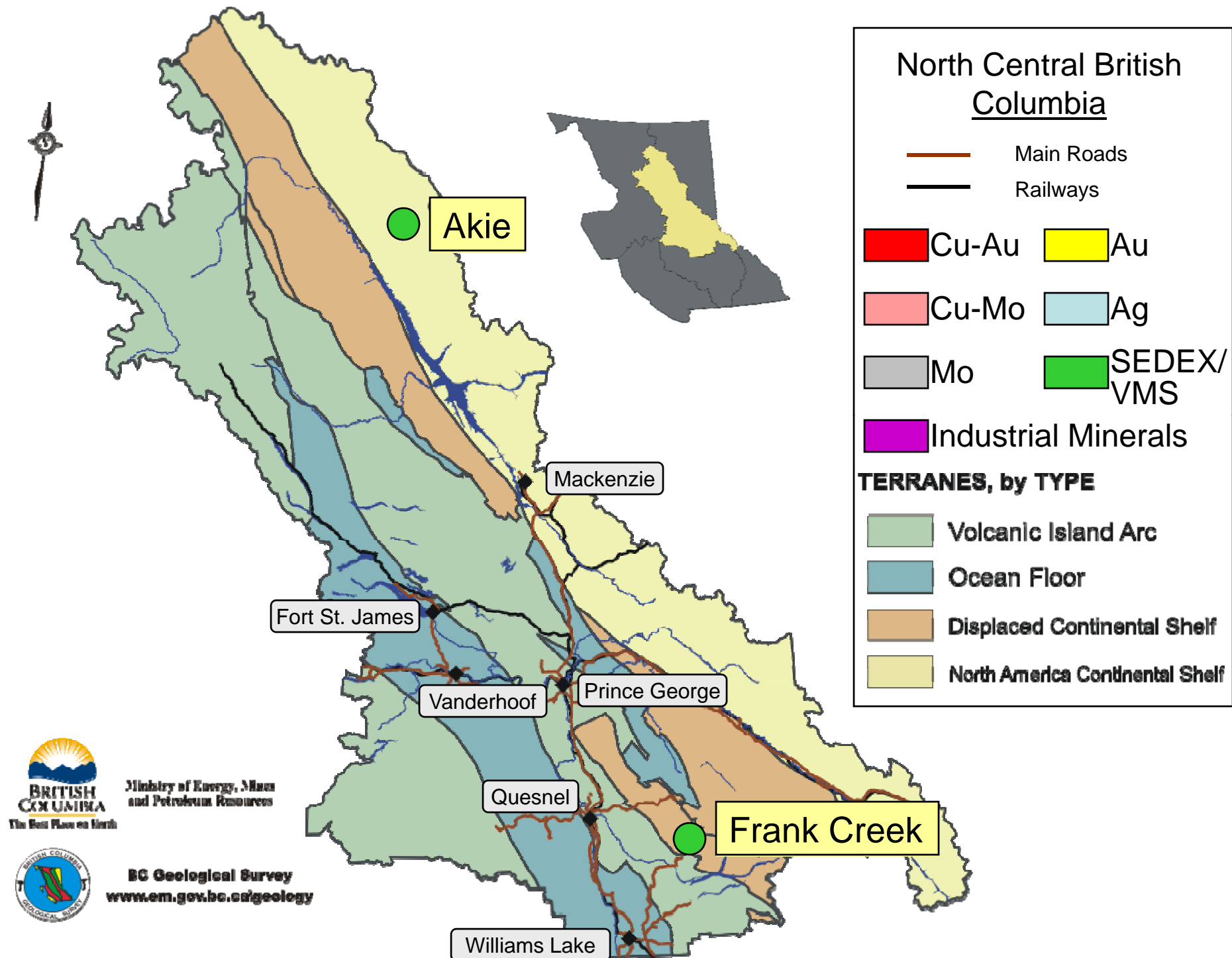
Falcon

(Geoinformatics Exploration Inc)

- Early 2008, company reported encouraging results from two initial holes (2007) on its grassroots porphyry Mo prospect
- 2008: 8 new holes, 2 996 m drilling with visible molybdenite in all holes defined a mineralized zone at least 440m x 475 m x 418 m deep, open in all directions



Molybdenite on quartz selvage, hole
FN-07-12, 200 m





Frank Creek (Barker Minerals Ltd)



Polydeformed quartz-intruded
volcanic rock at Frank Creek

- Identified as a kuroko-style VMS deposit on the bottom limb of a large recumbent fold
- Veins disseminations, stringers, semi-massive and massive sulphides interpreted as footwall-type stockwork mineralization
- 2008: 2 375 m drilling program confirmed model



Akie

(Canada Zinc Metals Corp)

Sphalerite (silver-coloured) in pyritic sediments, A-07-51 →

- Sedimentary exhalative (SEDEX) Pb-Zn-Ag deposit
- Host is folded shales and siltstones of Upper Devonian Gunsteel Fm
- 2008 NI 43-101: inferred 23.6 million tonnes @ 7.60% Zn, 1.50% Pb, 13.0 g/t Ag
- 2008: major access road construction, 6 226 m drilling on Cardiac Creek and North Lead zones



North Lead zone drilling

The End



Any Questions?

