



BRITISH COLUMBIA

Mineral Exploration and Mining Overview - 2008

Jay Fredericks and David Lefebure
BC Ministry of Energy Mines & Petroleum Resources

Minerals North

April 22, 2009



Acknowledgements

Regional Geologists (L to R)

Dave Grieve (Cranbrook)

Bruce Madu (Kamloops)

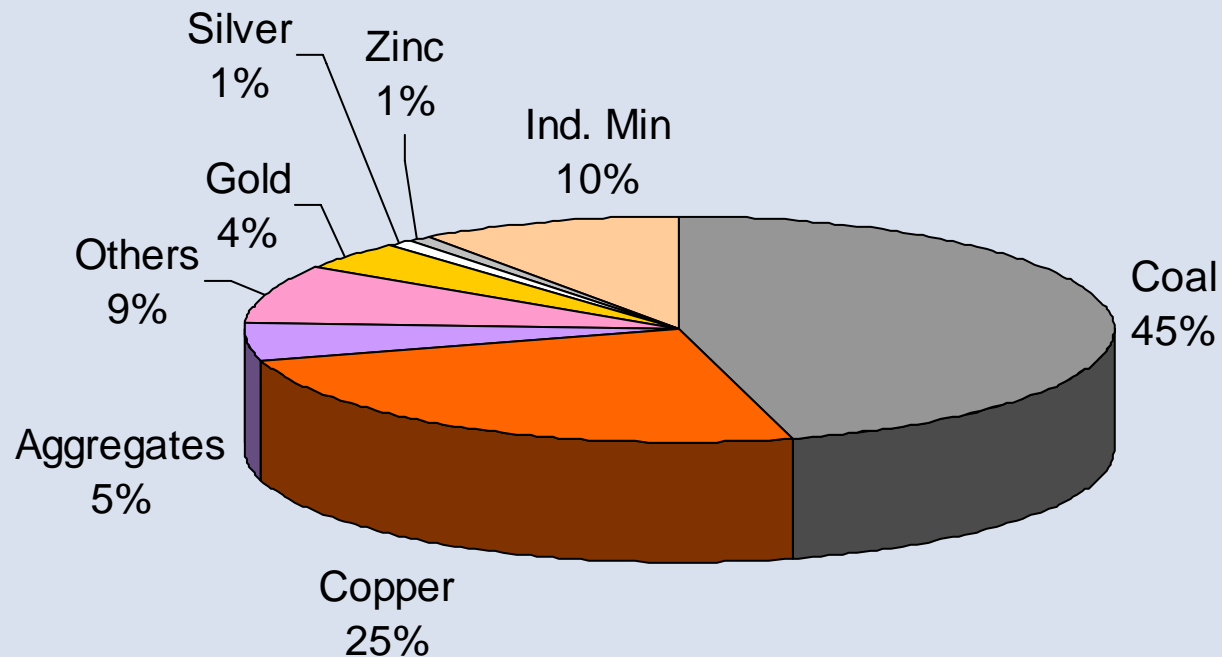
Bruce Northcote (Vancouver)

John Degrace (Prince George)

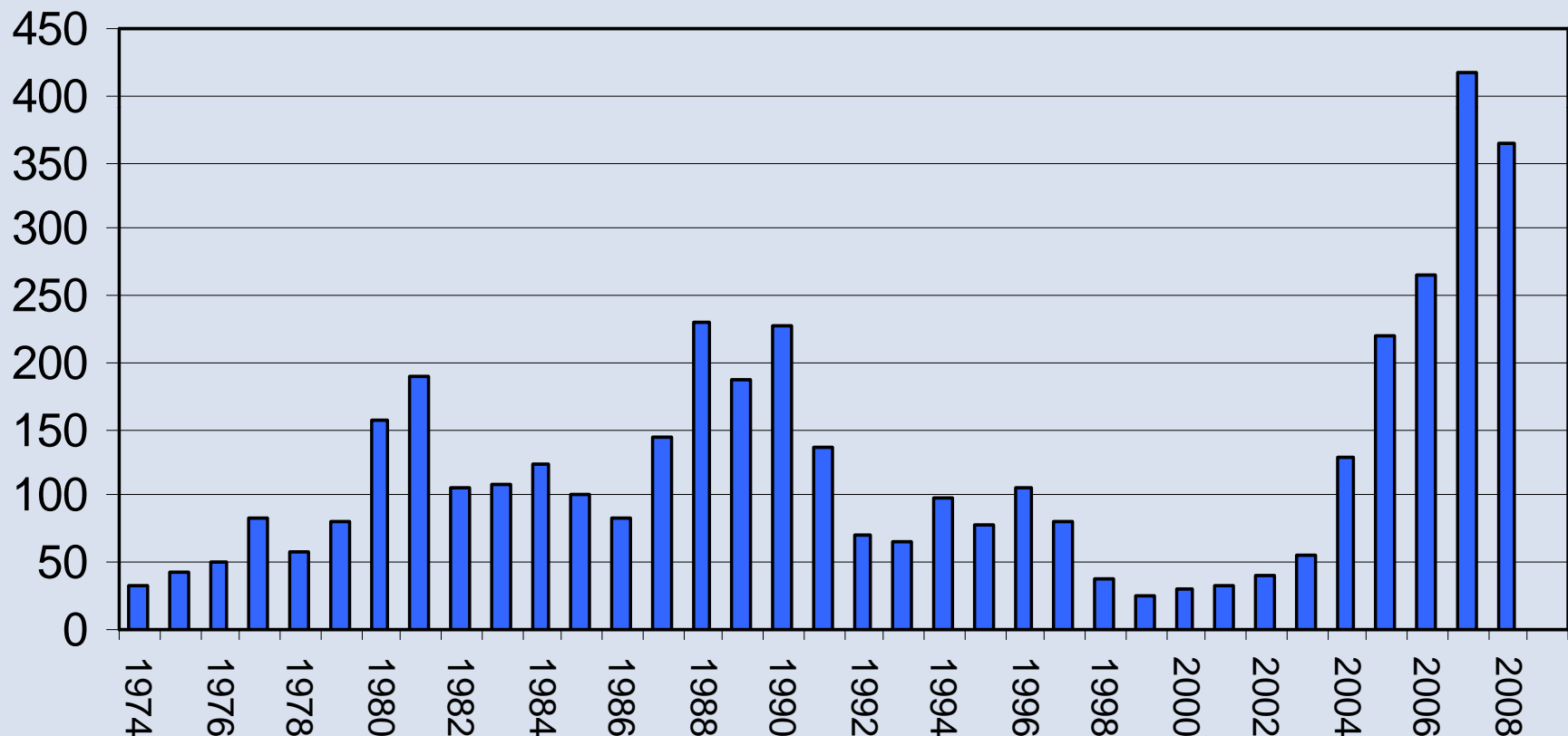
Paul Wojdak (Smithers)



2008 Value of Mineral Production: \$6.7 Billion (preliminary)



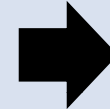
BC Mineral Exploration Expenditure \$367 million in 2008



Current Economic Situation

January - Present

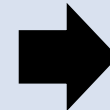
Coal prices: currently \$125 – \$130/t



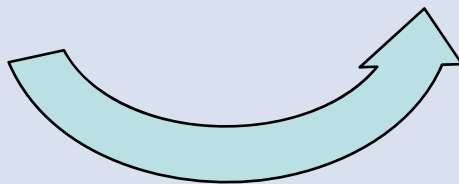
Copper prices: currently \$2.15-2.20/lb



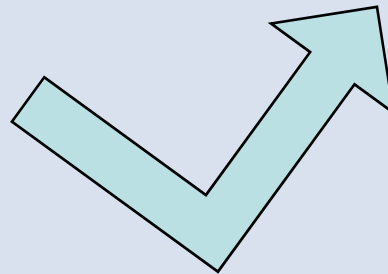
Gold prices: currently \$860-886/oz



Molybdenum: currently \$7-10/lb

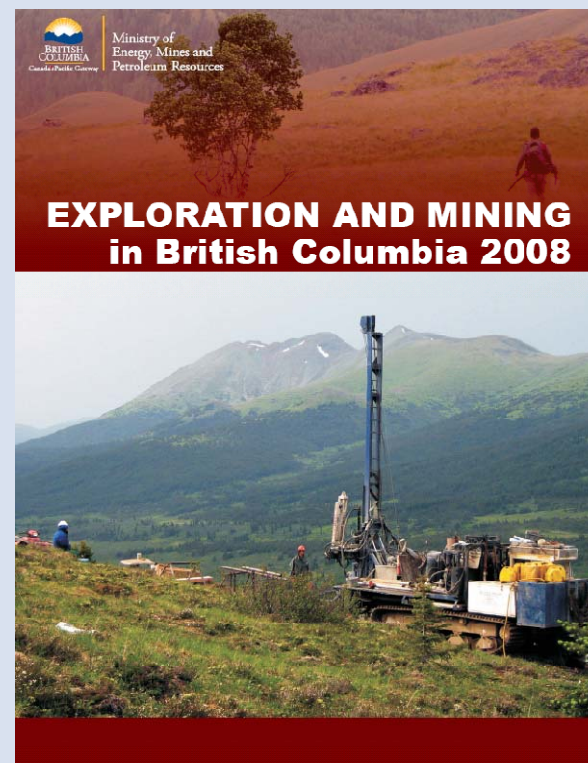
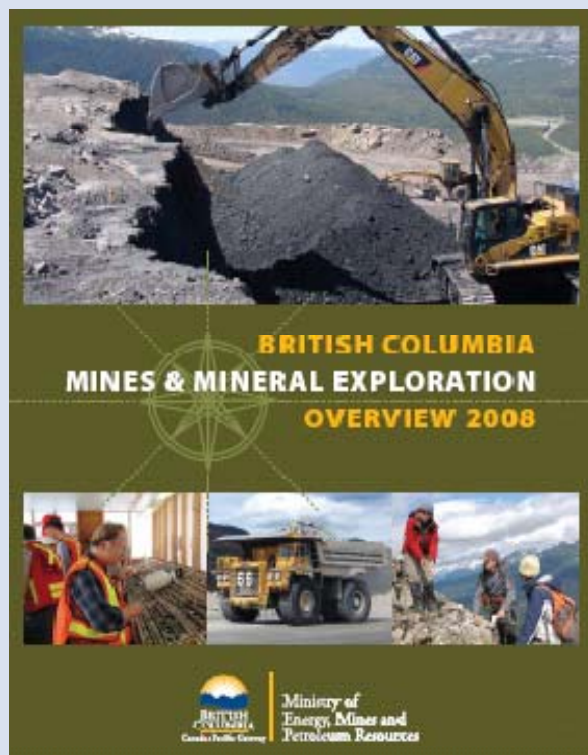


VS



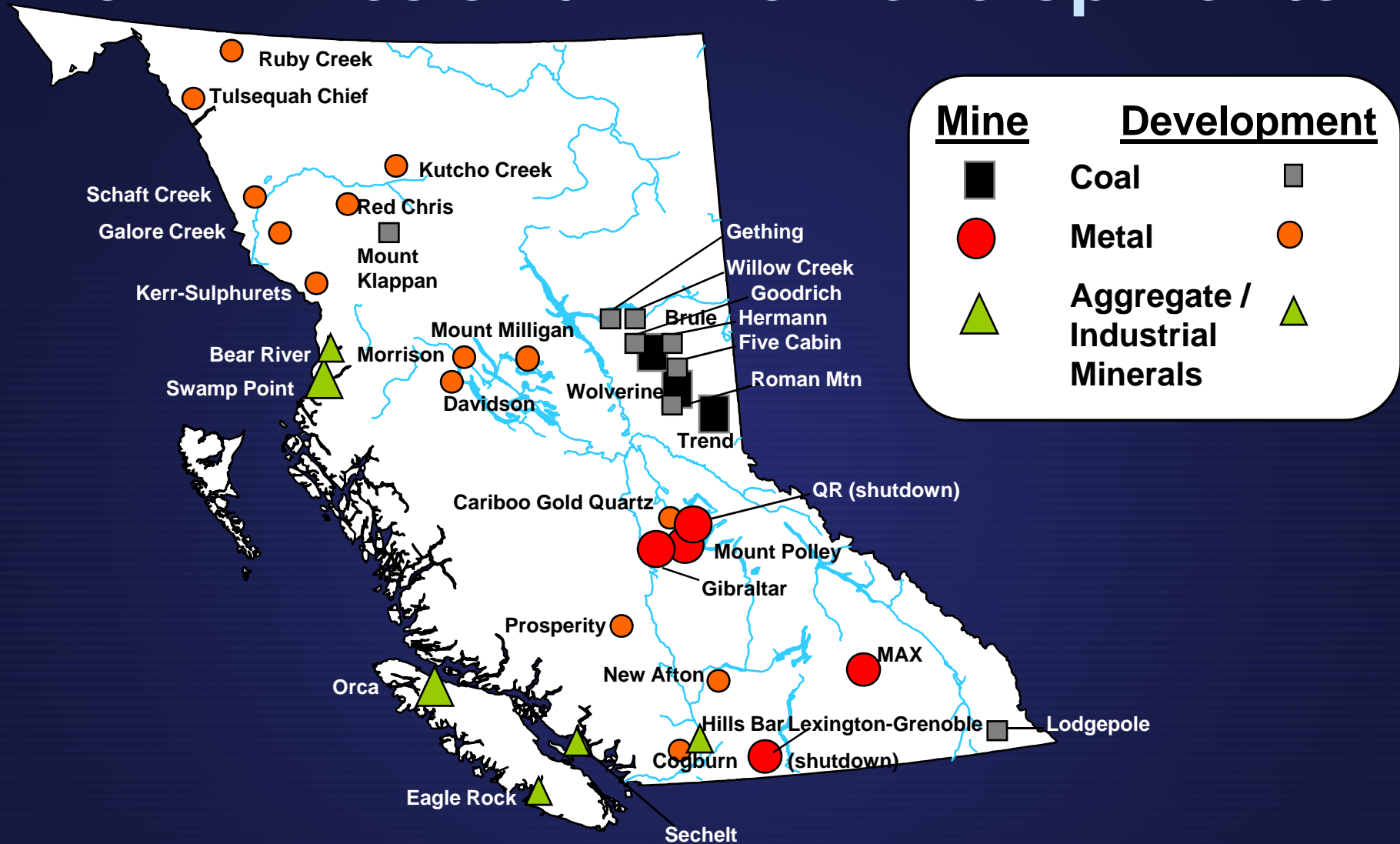
?

British Columbia Industry Activities



- **Free Publications – Available Here**

New Mines and Mine Developments



Since 2005

January 2009

Coal

Coal Projects

Established

Fording River
Elkview
Greenhills
Line Creek
Coal Mountain
Quinsam

New

Trend
Wolverine
Willow Ck

Proposed

Gething
Horizon
Lodgepole
Hermann
Roman Mtn
Crowsnest
Goodrich



Coal Exploration

- Crowsnest (SE) – Drilling to evaluate underground mining
- Goodrich (NE) – Proposed Underground bulk sample, 100,000 T



Copper Mines

Copper-Moly Mines

Highland Valley - Teck & Highmont

Gibraltar – Taseko Mines

Huckleberry – Imperial Metals (50%)

Copper-Gold Mines

Kemess – Northgate

Mount Polley - Imperial Metals



Copper-Gold Mine Construction

New Afton

- \$590 million Underground mine, 11 000 t/day



Copper-Gold Mine Development Project

Galore Creek

- Built access road to Km 42
(106 km total length)



Copper-Gold Projects in Environmental Assessment

- Milligan Reserves – 487 mT
@ 0.22 % Cu

**Schaft Ck Reserves – 812 mT
@ 0.30% Cu, 0.21 g/t Au,
0.020% Mo**

Reserves – 487 mT
, 0.43 g/t Au

Copper-Gold Porphyry Exploration

Ajax-Afton

- 30,000 m drill program

KSM (Kerr-Sulphurets-Mitchell)

- 17,000 m program to expand Mitchell deposit

Kwanika

- 40,000 m drilled

Snowfield

- New Snowfield North = East extension of Mitchell zone

Woodjam

- Southeast zone discovered in 2007, near Williams Lk



Porphyry Copper Exploration

Copper Mountain Copper Mountain Mining Corp

- Drilled 60,000 m
- Financing partnership with Mitsubishi
- New mill & permits required



Molybdenum Mines

Endako Mine

- Mill Expansion on hold
- Davidson (100% Thompson Creek)
 - Project on hold



Developing Denak West Pit



MAX Mine (Porphyry Molybdenum)

- Commercial production in April; improvements continue

Porphyry Molybdenum Exploration

Storie

- 20,700 m drilled;
- large addition indicated by 8 step-out holes



Kitsault

- 10,127 m program to confirm and up-grade resource



Volcanic Massive Sulphide Mine

Myra Falls Mine Breakwater Resources Ltd

- Temporary shut down announced but may be averted



Volcanic Massive Sulphide Development

Tulsequah Chief Redfern Resources



- New Airstrip in operation
- Road built from landing to mine



Volcanic Massive Sulphide Exploration

Kutcho Creek - Capstone Mining (formerly Sherwood Copper)

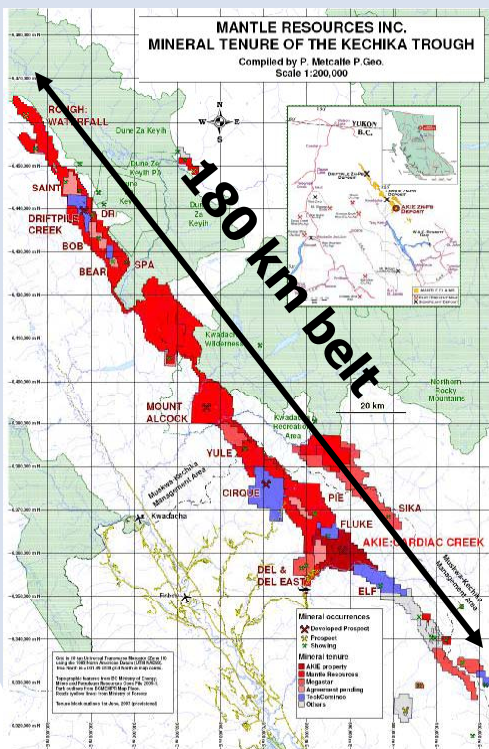
- Improve definition of high grade – 81 holes, 9100 m





Sedex Zinc-Lead Exploration

Akie Mantle Resources Inc.



- 6200 m drilled



Volcanic “Massive” Sulphide Exploration/Environmental Assessment

Harper Creek Yellowhead Mining Inc.

- Disseminated deposit, 20,000 m drilled

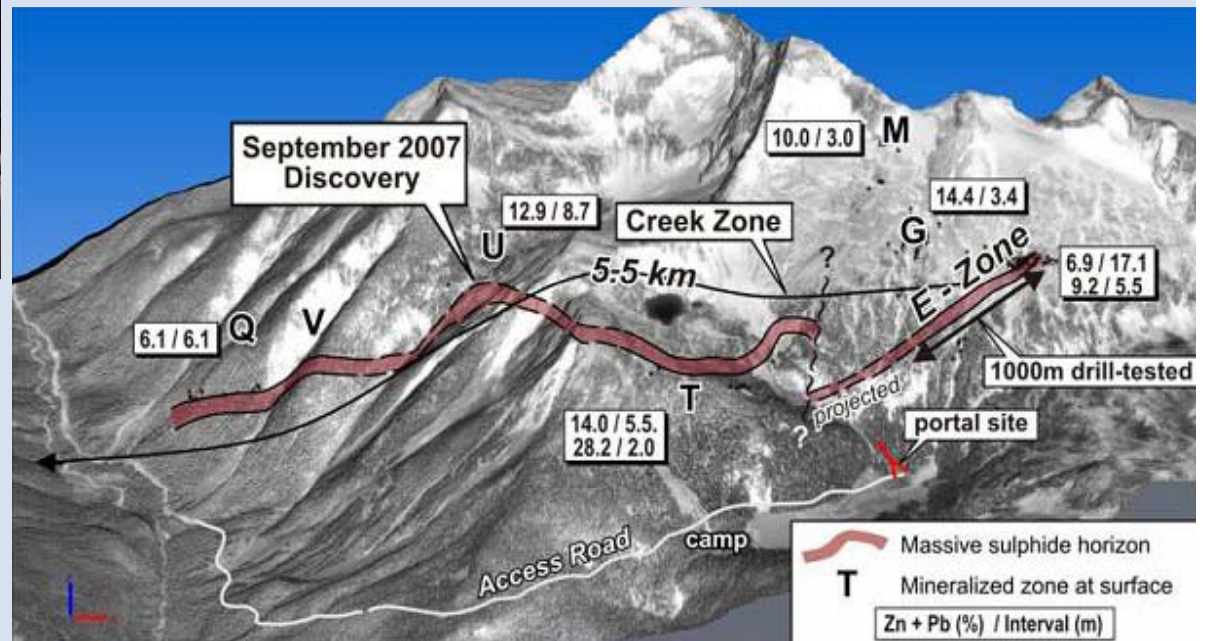


Sedex Zinc-Lead Exploration

Ruddock Creek Selkirk Metals Corp.



- 1150 m decline & crosscut to E-zone;
- 6,000 m drilled



Gold - Underground Mines

**QR (skarn)
Cross Lake Minerals**



**Cassiar (vein)
Hawthorne Gold**

Gold-Copper Vein Mine

Lexington-Grenoble Merit Mining Corp.



- Mine start-up in June 2008
- Shut-down in December



Sediment-Hosted Gold Exploration

Spanish Mountain

- 40,000 m program



Skygold Ventures (70%) & Wildrose Resources (30%)



Carbonatite: Tantalum-Niobium Exploration



Blue River Commerce Resources Corp.

- 26,000 m drilled

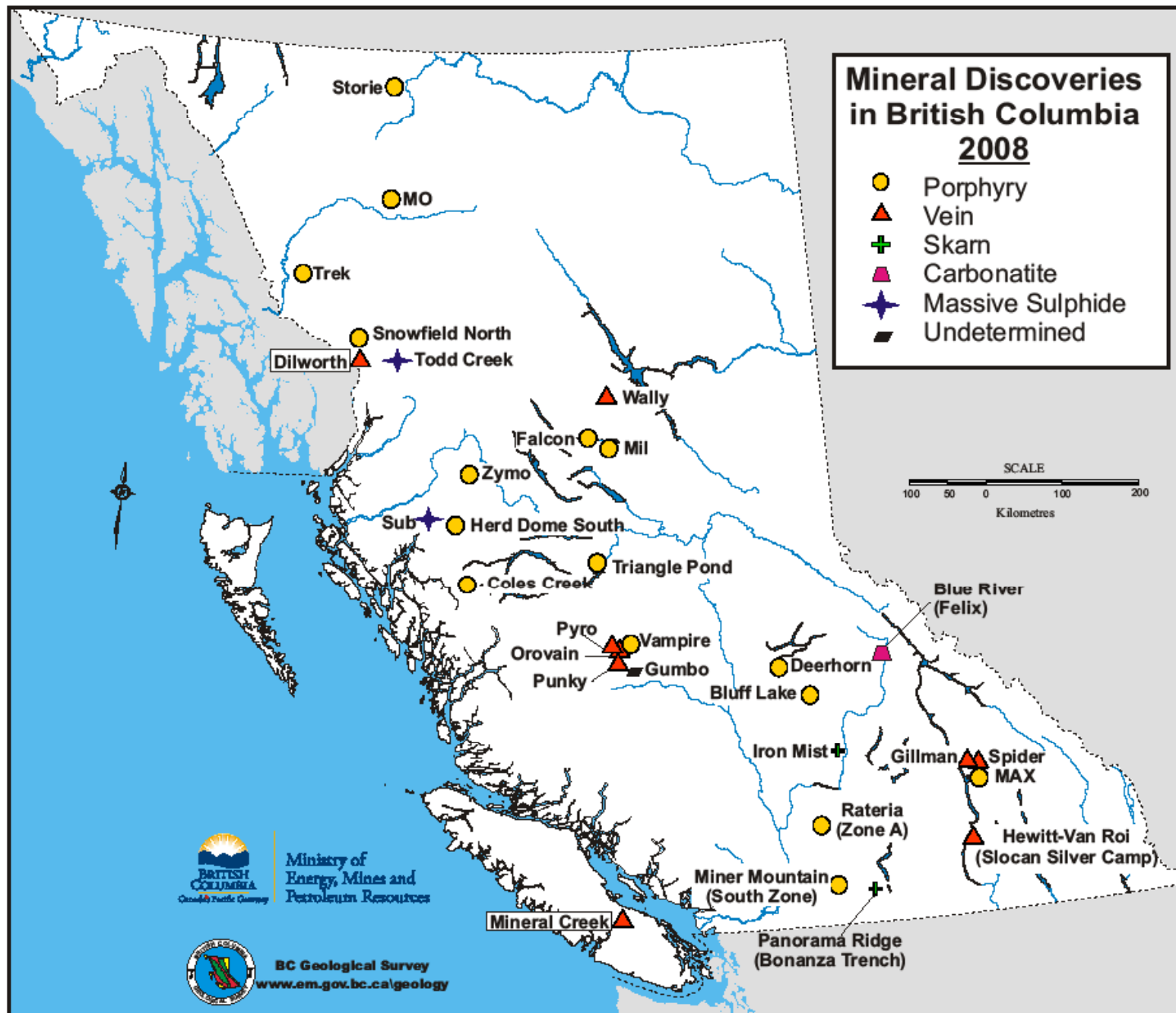


Nickel Exploration

Turnagain Hard Creek Nickel

- Working on metallurgy, engineering and baseline environmental data.





B.C. Geological Survey

Sharing Geoscience Expertise



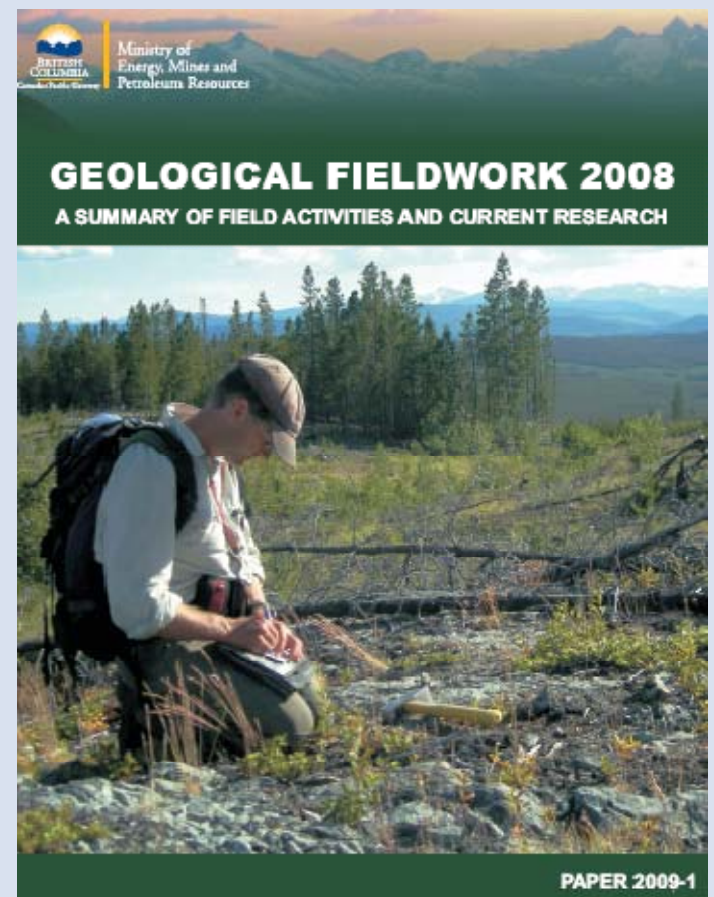
**Mineral potential
assessments**

**Till prospecting
workshops**

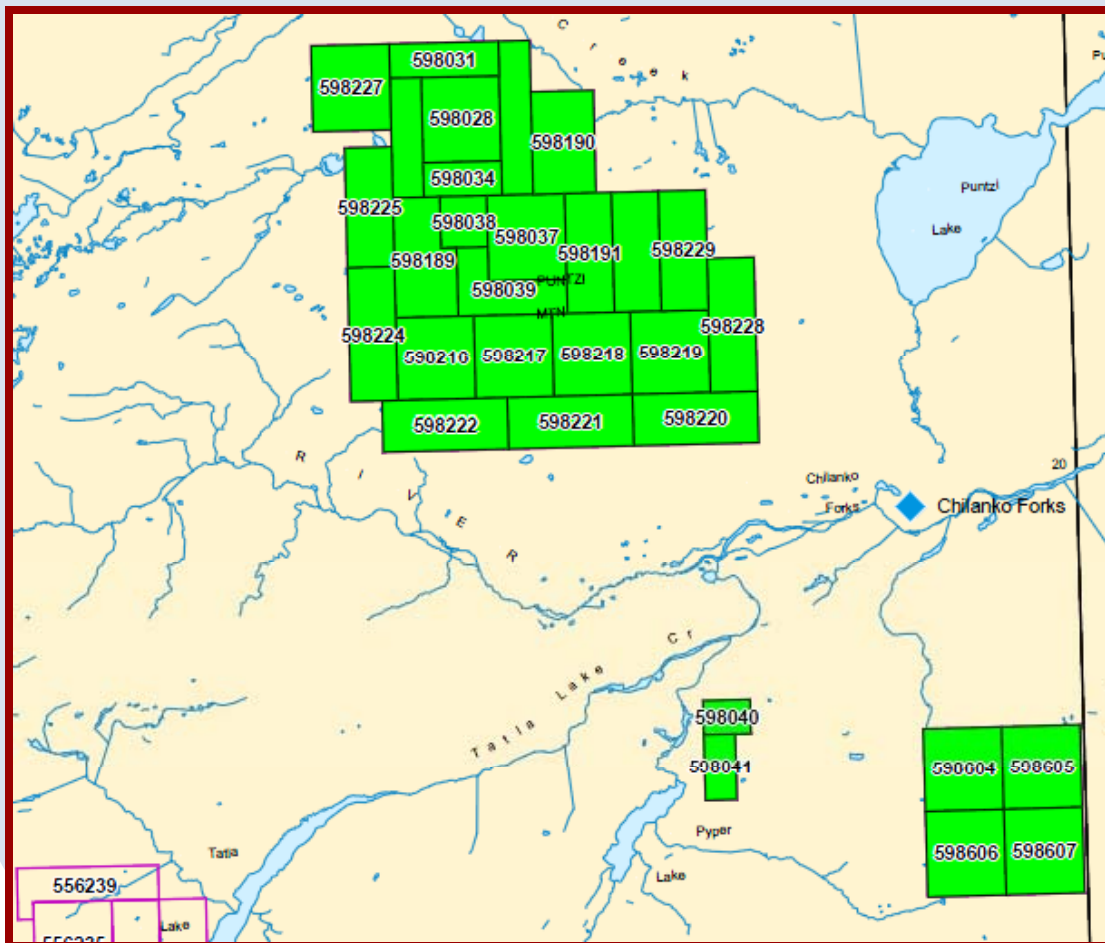


B.C. Geologic Survey Publications and Data Releases

- Geological Fieldwork
 - 19 articles
- 14 Open Files & Maps
- 19 Geofiles
- 5 Information Circulars
- 800 Assessment Reports
- 18 Industrial Mineral Deposit Profiles



Staking in the Chilanko Area 093C



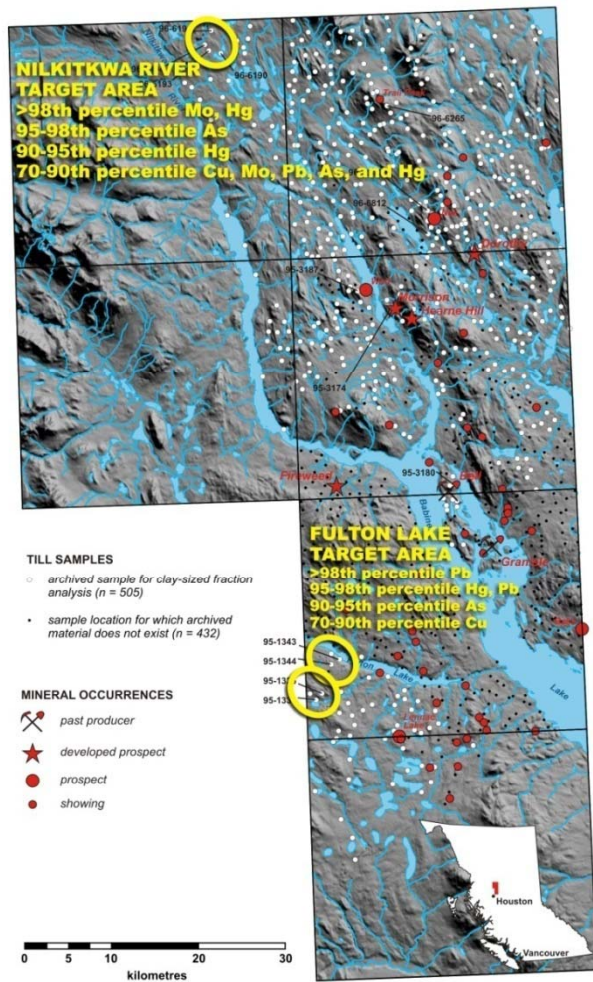
- 12,400 hectares,
- 30 titles staked during Roundup

- Showings:

Fit – Cu, Ag
 Ejowra – Cu, Ag
 ET – Cu, Ag, Au
 Erratic – Cu, Ag

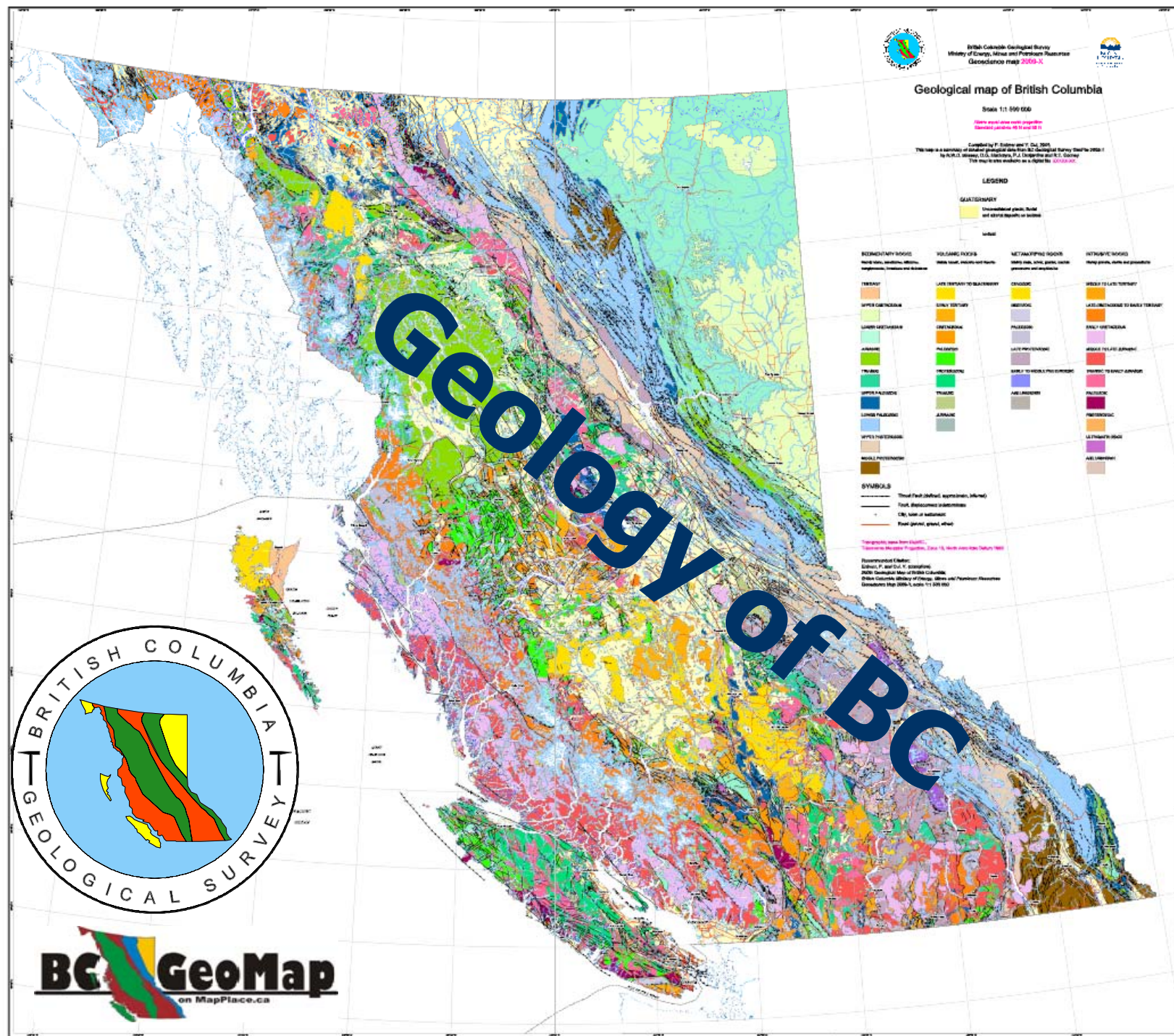
Open File 2009-6
 Geology Map

New Till Geochemical Release



Open File 2009-4 Till Geochemical Exploration Targets, Babine Porphyry Copper Belt, Central British Columbia

- 509 till samples re-analyzed
- Two new till geochemical exploration targets identified
- Resulted in 1320 ha staking – Nilkitkwa River target





British Columbia Mineral Development Office

Our Mandate:

- Promote B.C.'s mineral exploration and mining industries
- Point of contact for industry on issues
- Provide information about B.C.'s mineral and coal resources



Asia Investment Initiative

- Meet potential business partners or investors
- Develop relationships with Asian businesses and governments
- Participate in the Canada-China Mining Day
- Participate in China Mining October 20-22, 2009 in Tianjin, China



Agreement signing ceremony in Beijing
between Goldbrook Ventures and Jilin Jien
November, 2008

Recent Investments From Asia

September 2008

Compliance Energy signs agreement with Itochu Corp. (Japan) and LG International Corp (Korea) for the Raven Coal Project

October 2008

Copper Mountain Mining concludes MOU with Mitsubishi Materials Corp. (Japan) to develop Copper Mountain Project

November 2008

Goldbrook Joint Venture signs option agreement with Jilin Jien (China) during the NDRC Canada Investment Forum following China Mining in Beijing

April 2009

Nanika Resources signs joint venture agreement with Palm Clean Energy and Daewon Chemicals (Korea) on its Lucky Ship Project





Profiling Your Project We Can Help!

Post It!

- Post your company profile (using our template) on our website free of charge

Print It!

- We will print and distribute your profile to foreign, incoming investment inquiries and delegations

Promote It!

- Provide it to domestic and foreign investors looking for those opportunities

Plug It In!

- Plug your project into Canada's network of Trade Commissions at our embassies and offices abroad





BRITISH COLUMBIA



Thank you!