

TERRANE

M E T A L S C O R P .

TSX.V - **TRX**



www.terranemetals.com

**Design for Closure at Mt. Milligan
Minerals North
April 23, 2009**

**EXPLORATION
DELINEATION
DEVELOPMENT**

Forward Looking Statement

Certain statements in this document constitute “forward looking statements” which may not be based on historical fact. Such forward looking statements involve known and unknown risk, uncertainties and other factors which may cause the actual results, performance or achievements of the Company, or industry results to be materially different from any future results, performance, or achievements expressed or implied by such forward looking statements. Such factors include, among others, the following: actual results of exploration and development activities; the estimation or realization of mineral reserves and resources; the timing and the amount of future production; the costs and timing of the development of new deposits; future prices of precious and base metals; accidents; risks inherent in mineral exploration; risks associated with development, construction and mining operations; restrictions on foreign ownership; the Company’s history of operating losses and uncertainty of future profitability; uncertainty of access to additional capital; environmental liability claims and insurance; and dependence on joint venture partners.

Overview

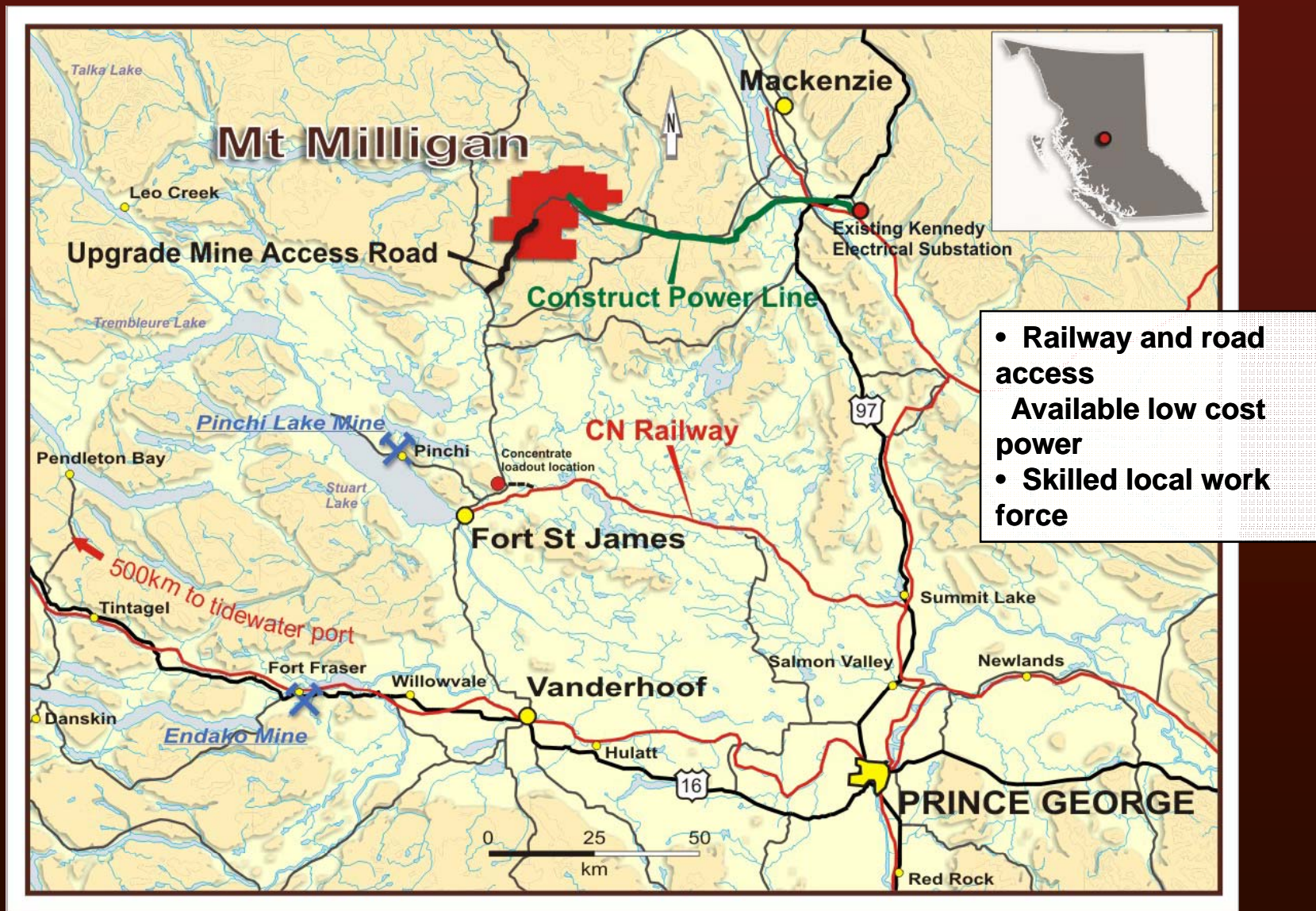
- Terrane Metals
- Mt. Milligan Project
- Environmental Assessment Status
- Opportunities to Participate in the EA Process
- Project Update & Timeline
- Design for Closure
- Community Engagement

Terrane's Canadian Assets

- ▶ **Mt. Milligan**, British Columbia
Copper, gold (100%)
- ▶ **Berg**, British Columbia
Copper, molybdenum (100%)
- ▶ **Howards Pass**, Yukon/NWT border
Zinc (Option payments, and Royalty interest with Selwyn Resources)
- ▶ **Maze Lake**, Nunavut
Gold (Joint venture with Laurentian Gold Fields)



Mt. Milligan Location – “The Advantage”



EA for Dummies



BRITISH
COLUMBIA
The Best Place on Earth

INFORMATION BULLETIN

For Immediate Release
2009ENV0015-000382
March 18, 2009

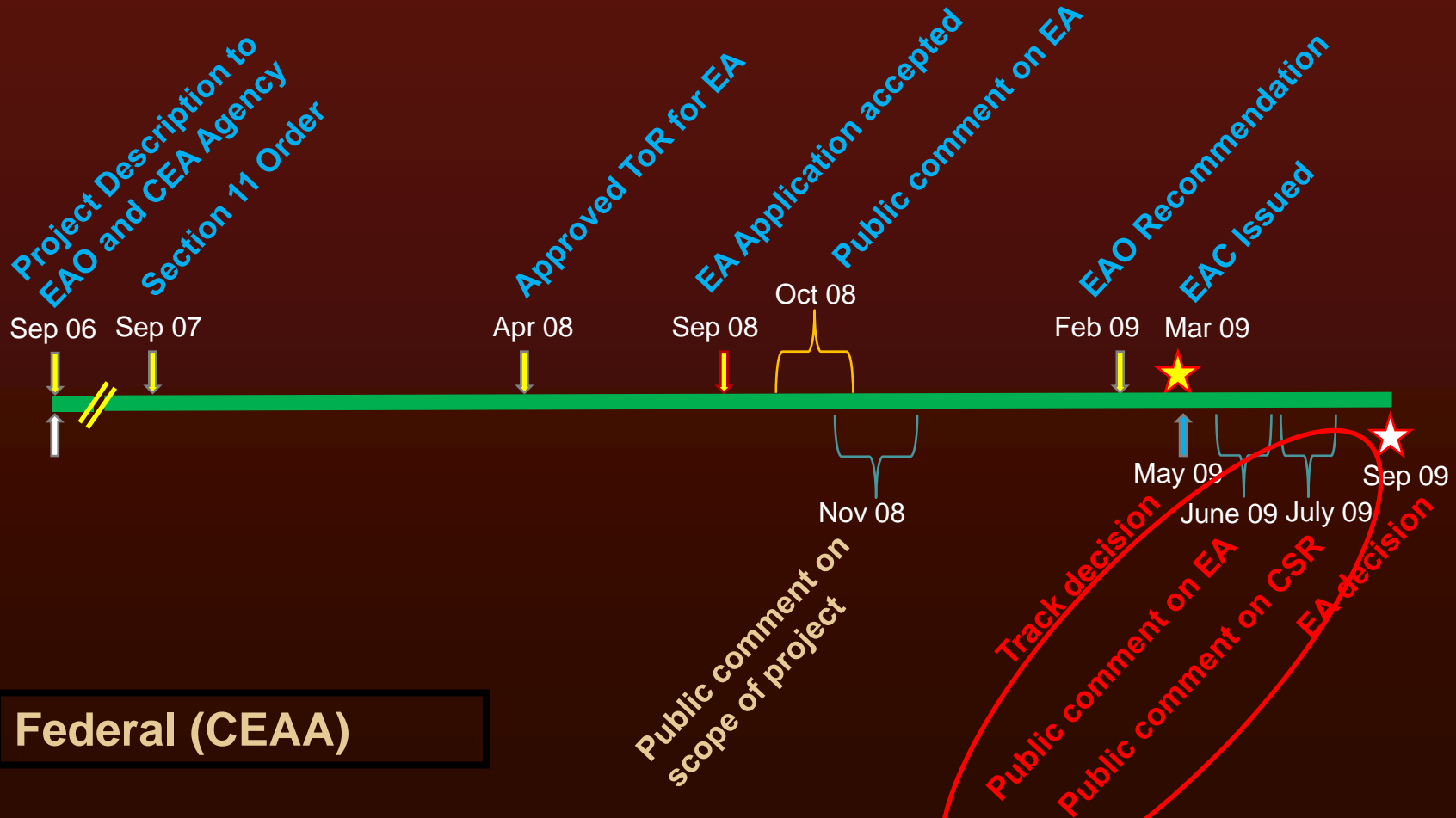
Ministry of Environment

MOUNT MILLIGAN MINE PROJECT APPROVED



EA Timeline

Provincial (BCEAA)



Project Update & Timeline

- ✓ Positive Feasibility Study Completed (March 2008)
- ✓ Environmental Assessment Application Submitted (July 2008)
- ✓ Joint Venture Option/Loan Agreement with Goldcorp (August 2008)
- ✓ Provincial EA Approval (March 2009)
- ❑ Federal EA Approval (Q3 2009)
- ❑ Construction Permits in place (Q4 2009)
- ❑ Begin Site Construction (Q3 2010)
- ❑ Begin Commercial Concentrate Production (Q4 2012)

Environment & Sustainability Guiding Principles

- Build environmental design principles into the mine design
- Minimize environmental effects
- Integrate community and social values
- Maximize benefits from the mine



Environmental Design Principles



King Richard Creek

- Avoid environmentally sensitive areas
- Minimize the mine footprint
- Minimize effluent discharges to the environment
- Design for closure



Meadows Creek



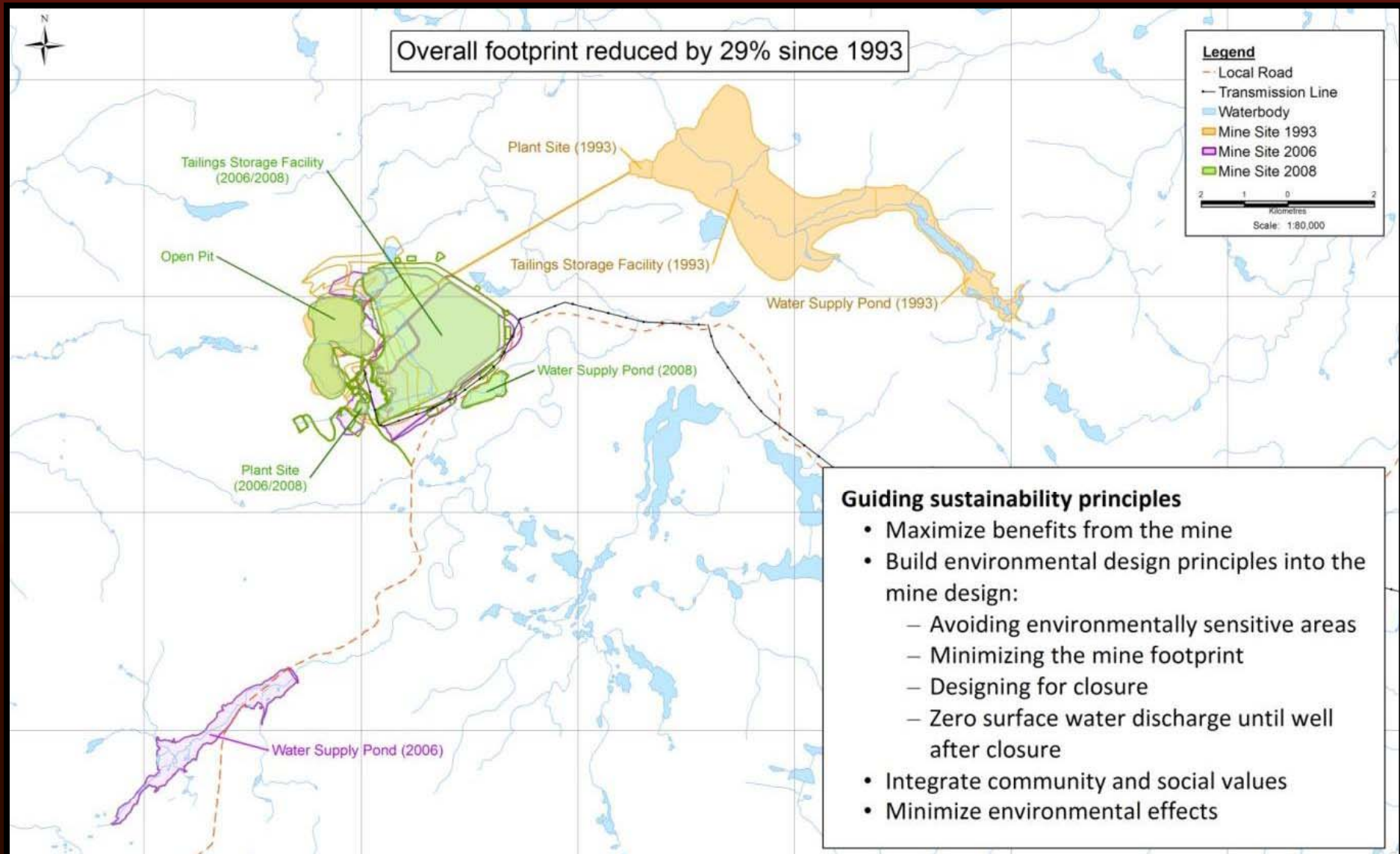
Rainbow Creek

Environmental Management

- Measures to minimize environmental effects:
 - Baseline data collected over 20 years
 - Extensive acid rock drainage (ARD) database
 - Conservative water quality model
 - Adaptive management approach: risks assessed, contingencies developed
 - Comprehensive Environmental Assessment and Environmental Management Framework

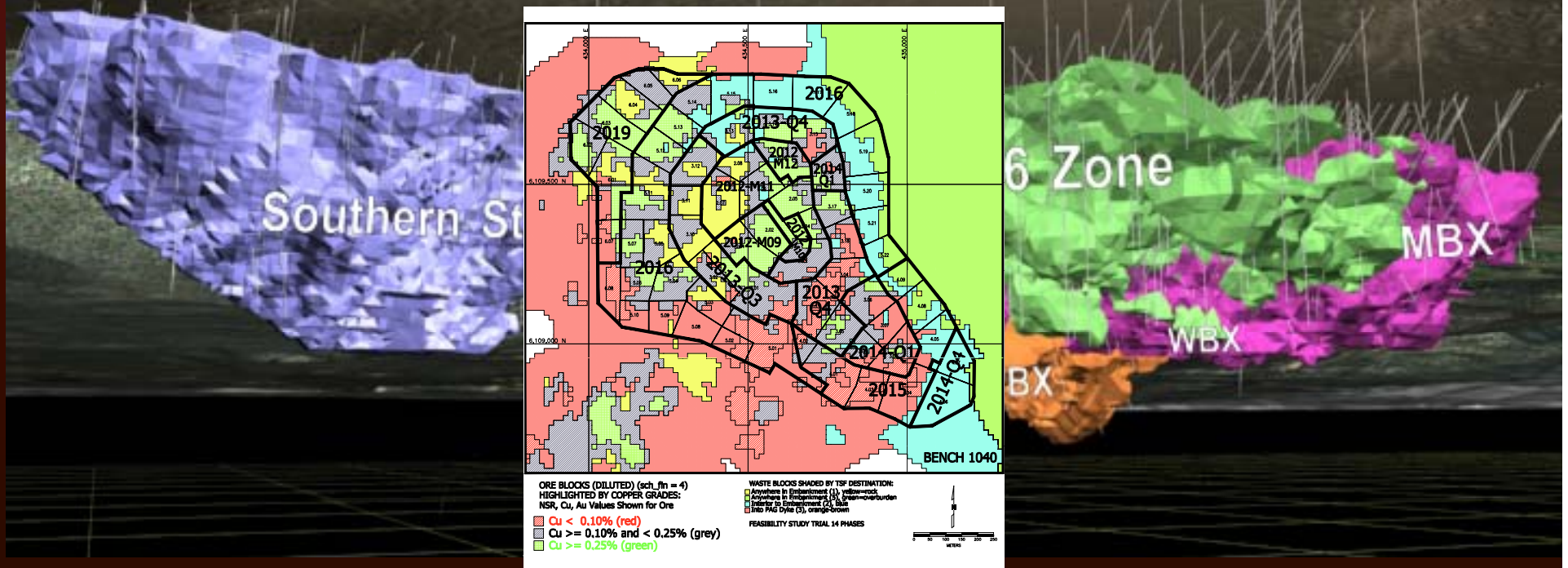


Reduced Footprint



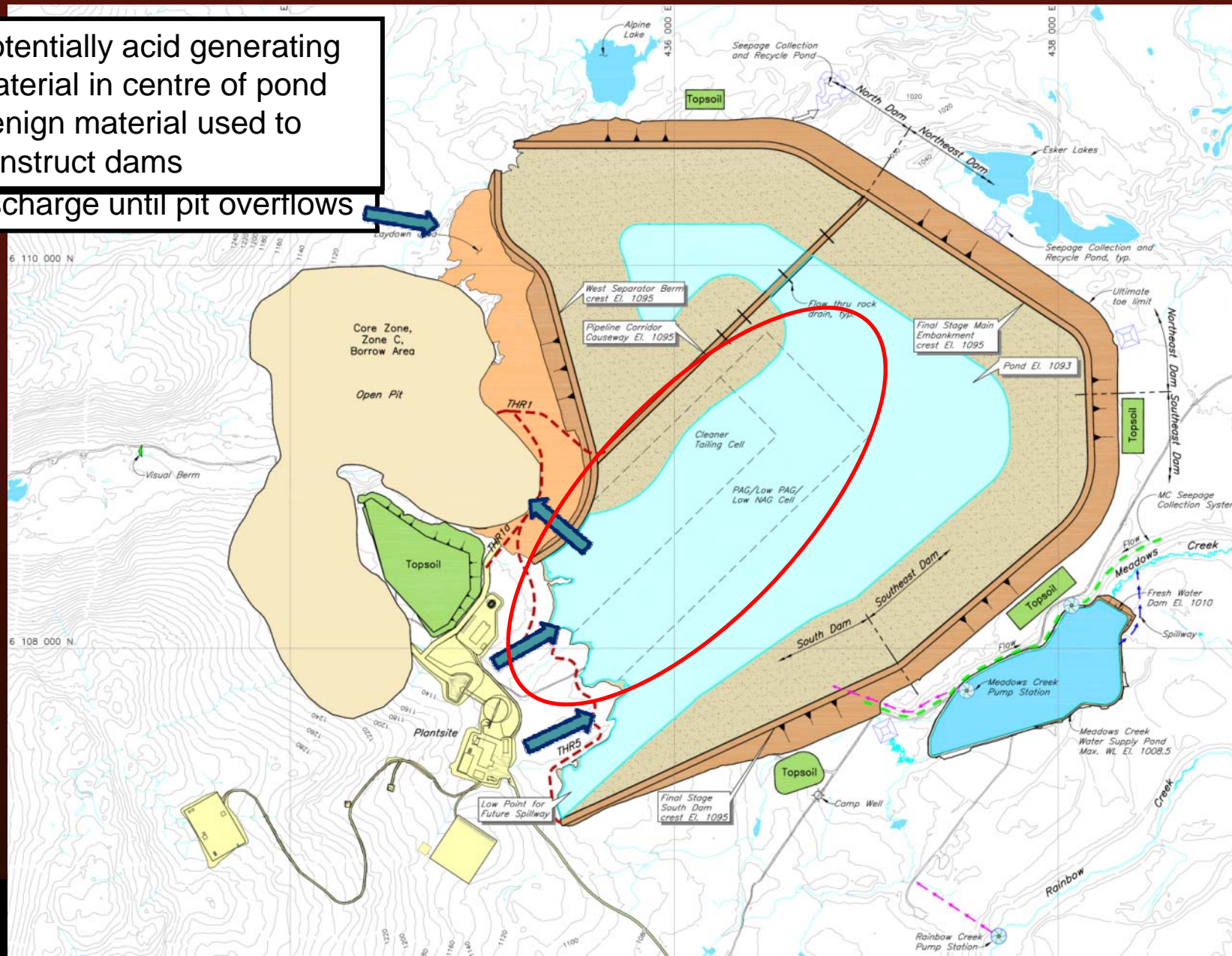
Integrated Mine Waste Management

- Waste rock characterization integrated with resource model
- All potentially acid generating rock to be stored under water in tailing pond or open pit.
- No waste rock dumps at end of operations.



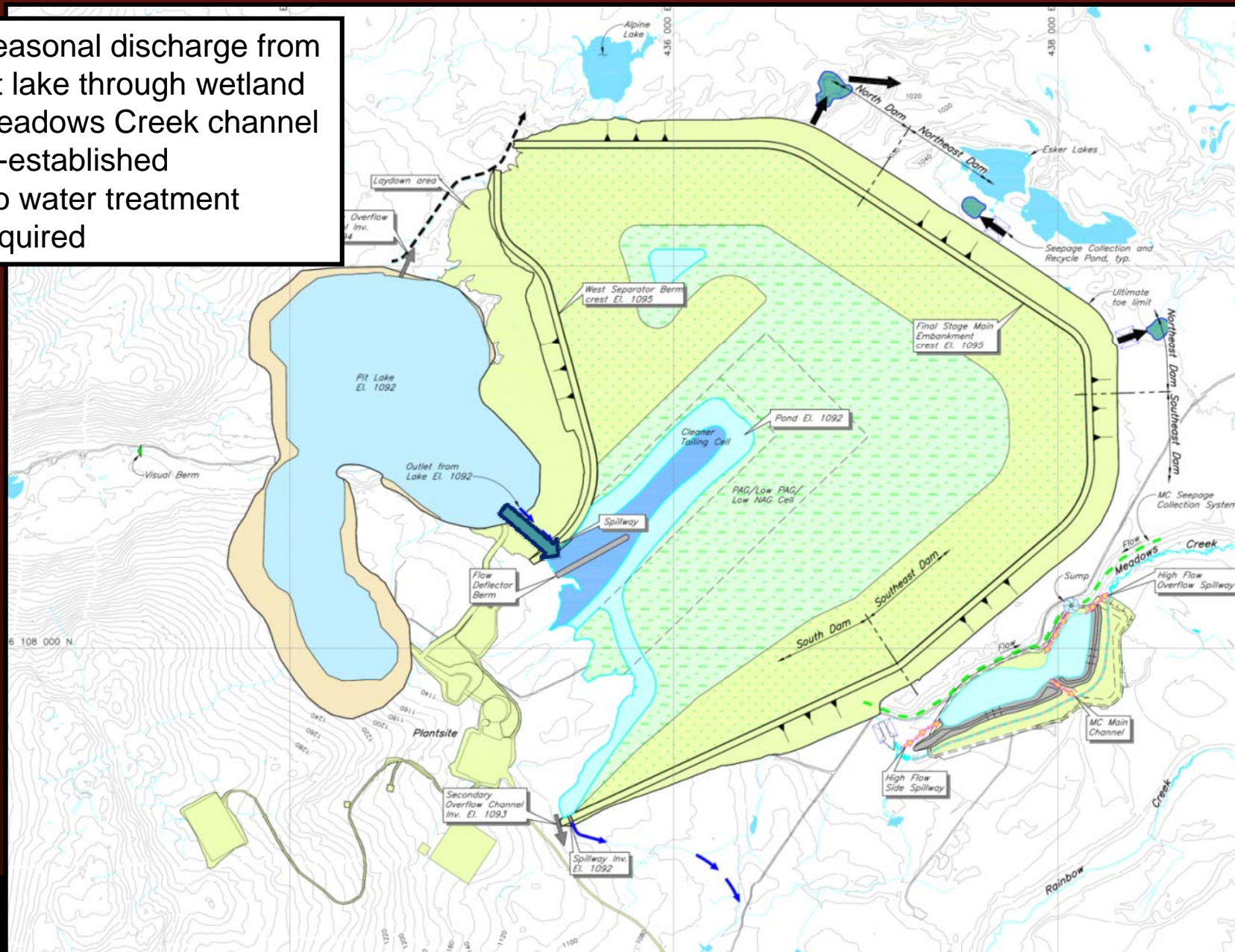
Water Management

- Potentially acid generating material in centre of pond
 - Benign material used to construct dams
- discharge until pit overflows



Water Management – Post Closure

- Seasonal discharge from pit lake through wetland
- Meadows Creek channel re-established
- No water treatment required



Community Engagement & Sustainability

- Mine closure is about people too!
- What is the legacy we want to leave?
- Community Sustainability Committee



Closure and Reclamation Summary

- Mine pits will fill with water, and reach maximum fill in approximately 22 years
- Water quality will be monitored and reported, additional treatment will be installed if necessary
- Tailing storage facility will be re-vegetated and will include a wetland to assist in water quality management
- Mine infrastructure - roads, powerline corridors and building sites will be reclaimed
- Closure plan reviewed every 5 years
- Terrane will maintain reclamation bonding, and report on reclamation progress for many years – the goal is to return land use to its current uses: wildlife and recreation

TERRANE

M E T A L S C O R P .



Now



Operations



Post-Closure

HEAD OFFICE:

1500 – 999 West Hastings Street
Vancouver, British Columbia
Canada V6C 2W2

T 604 681 9930
F 604 630 2090

CONTACT:

Andrew Thrift
Manager, Environment and Permitting

T 604 681 9930
athrift@terrane-metals.com

TERRANE
M E T A L S C O R P .